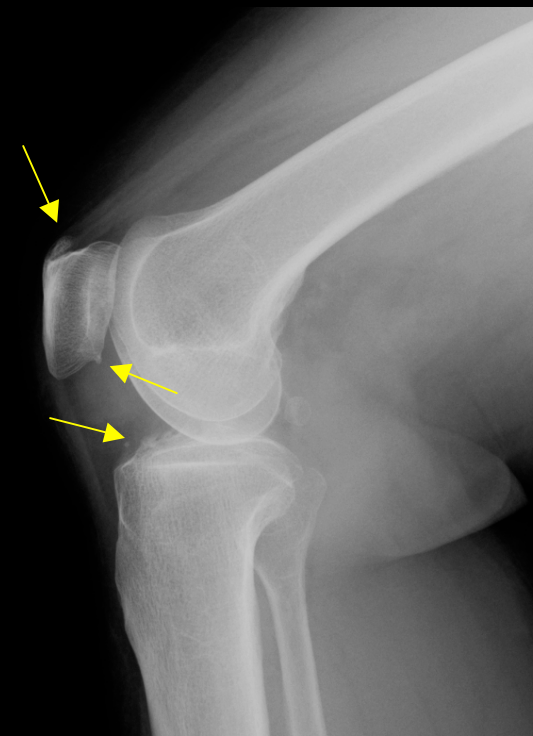
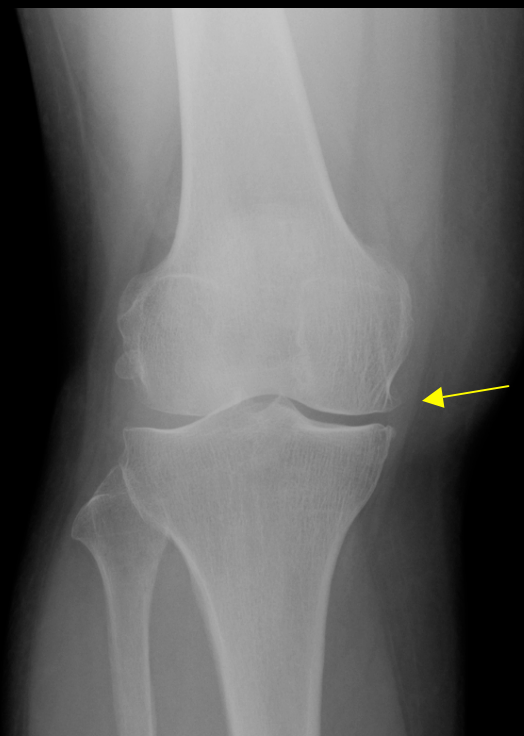
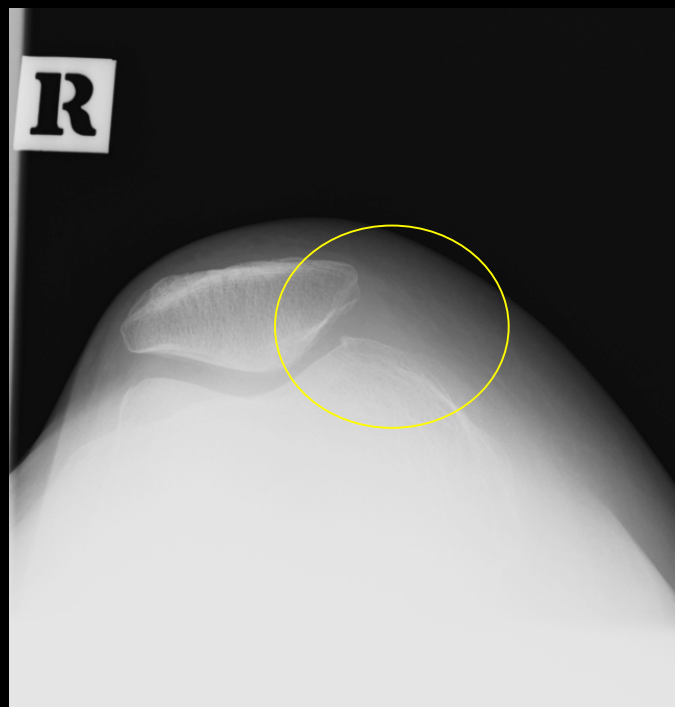
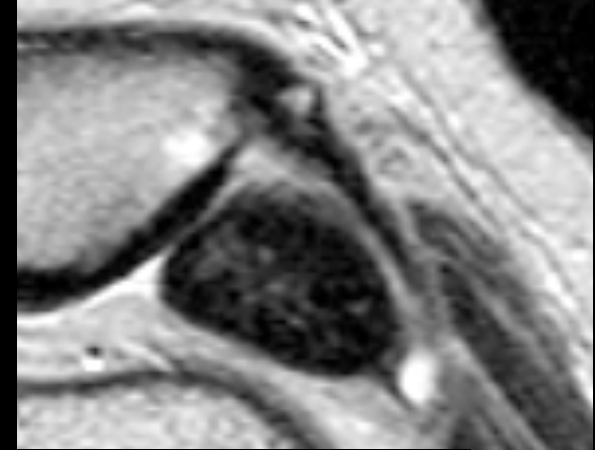
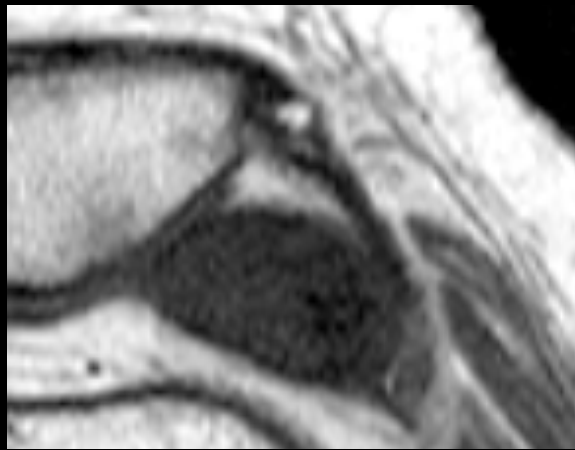


右膝関節単純X線写真



- 骨棘形成(+)、軽度の変形性変化(+)
- 腫瘍の部分に明らかな石灰化(-)

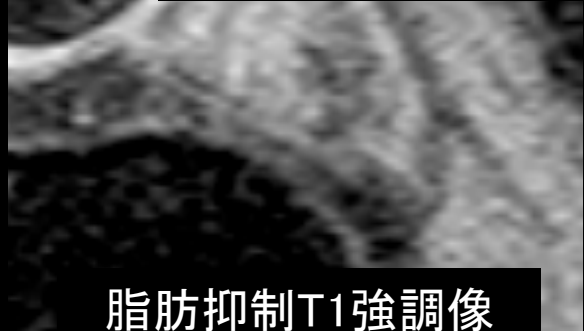
右膝関節MRI
(軸位断拡大)



● T1強調像、T2強調像で低信号

● T2強調像では内部に淡い高信号

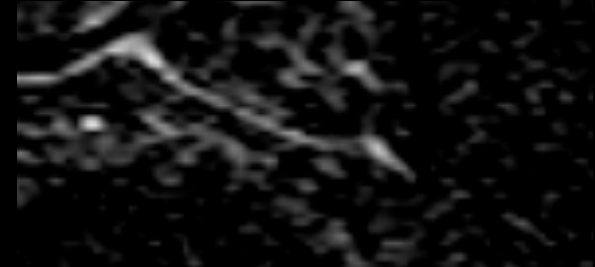
● 内部の僅かな増強効果



脂肪抑制T1強調像

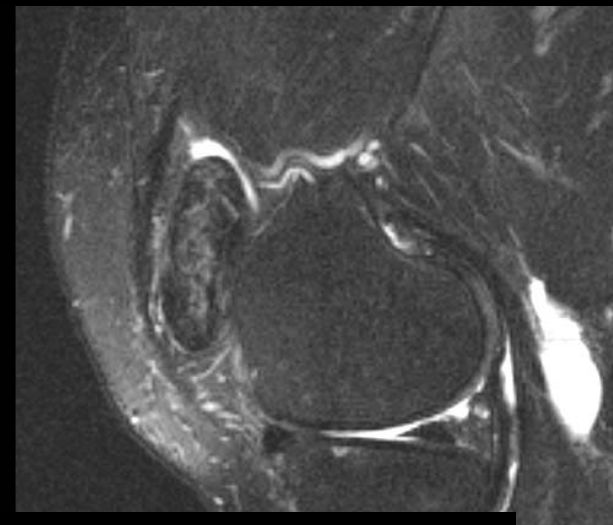
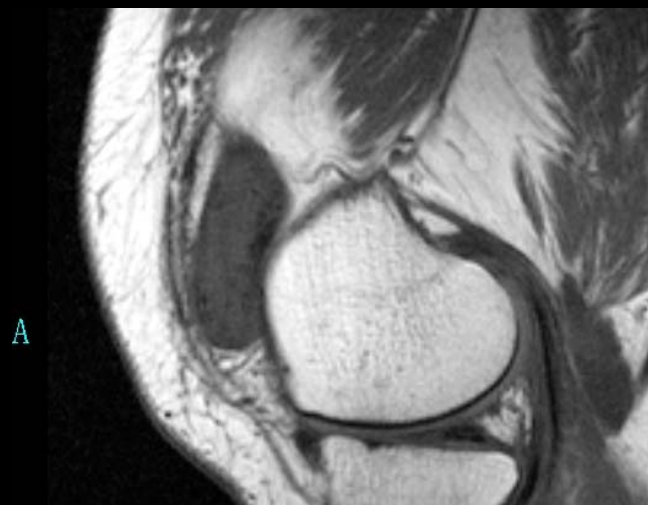


造影後脂肪抑制T1強調像

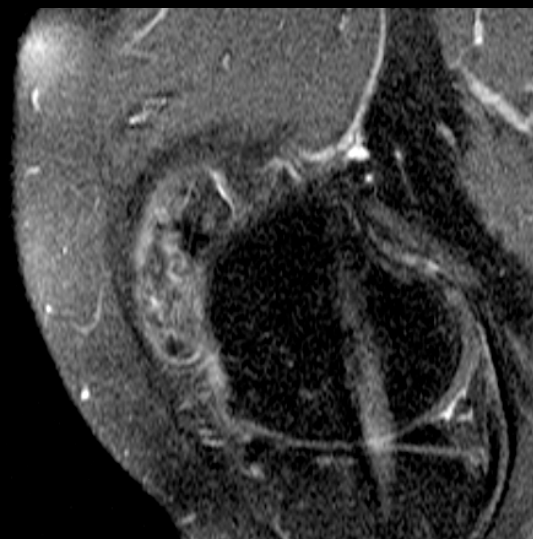


造影前後subtraction

右膝関節MRI
(矢状断)



● 明らかな脂肪成分や出血成分(-)

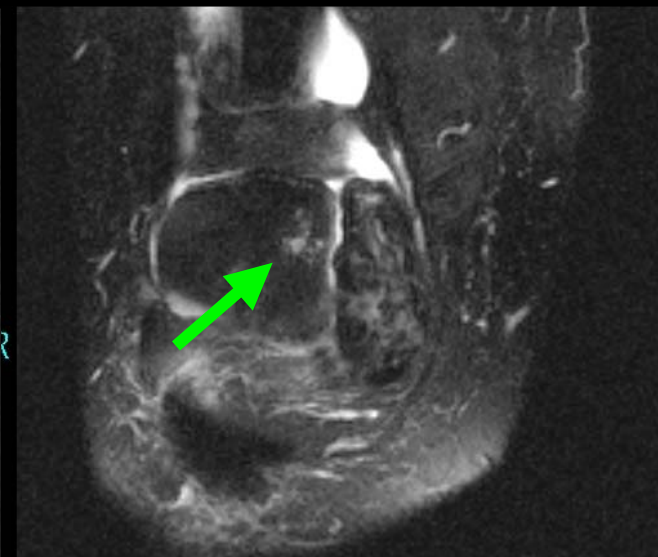


造影後脂肪抑制T1強調像

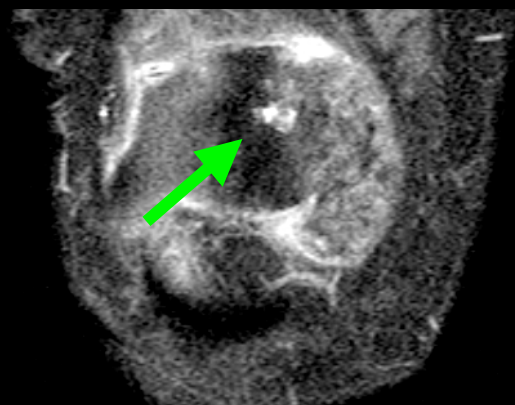


T2*強調像

右膝関節MRI
(冠状断)



●膝蓋骨の腫瘍が接する部分に
erosionあり？



造影後脂肪抑制T1強調像



T2*強調像

病理組織

