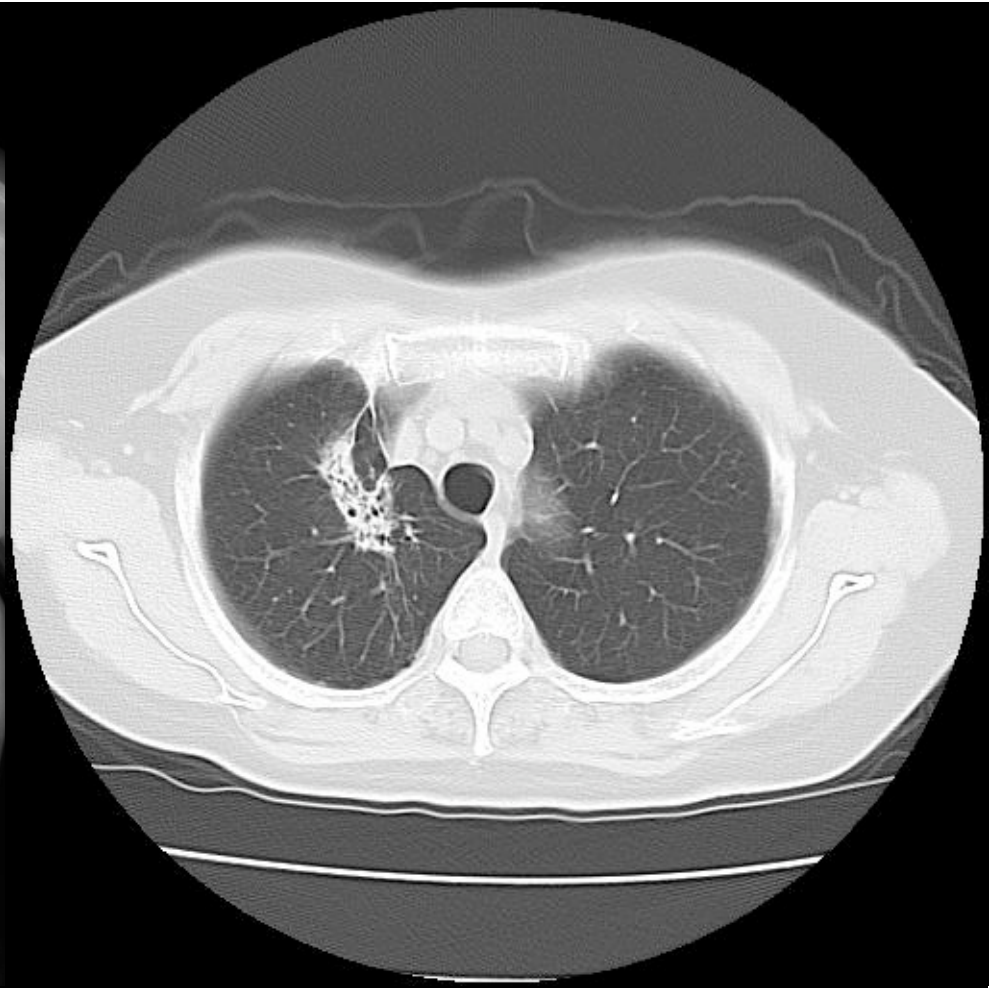


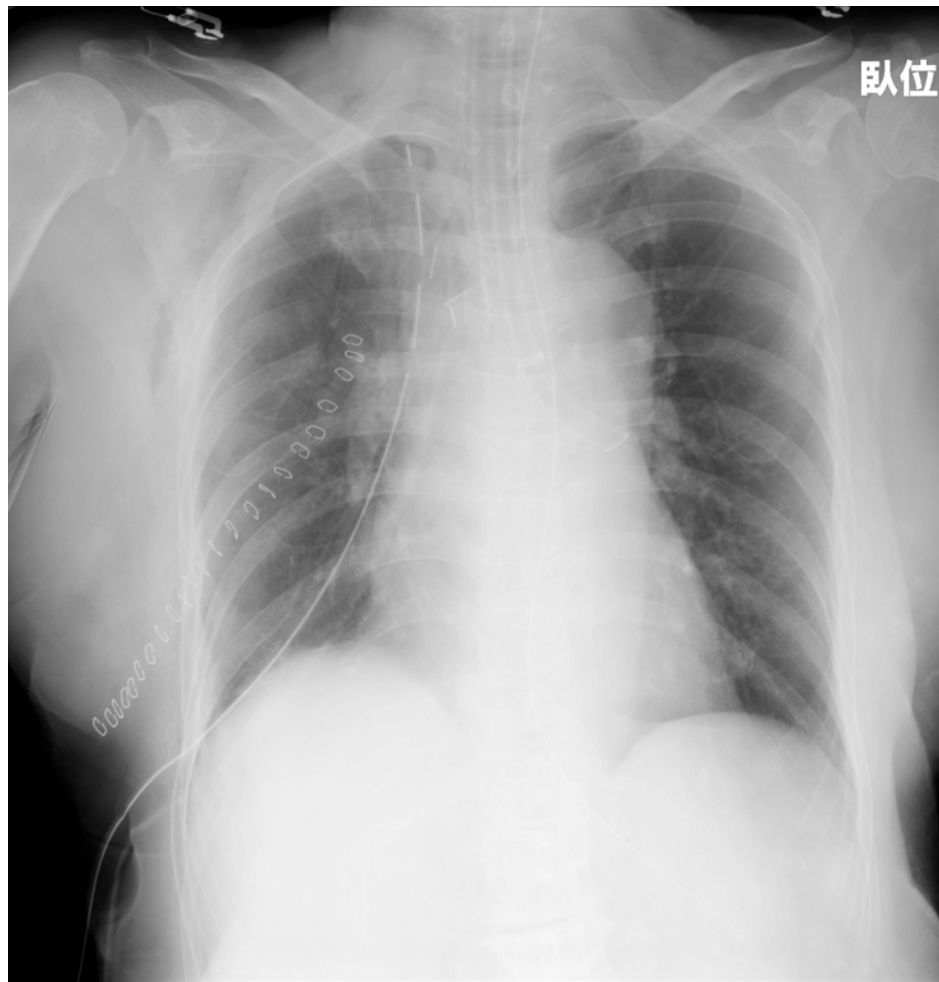


胸部単純写真 (PA)

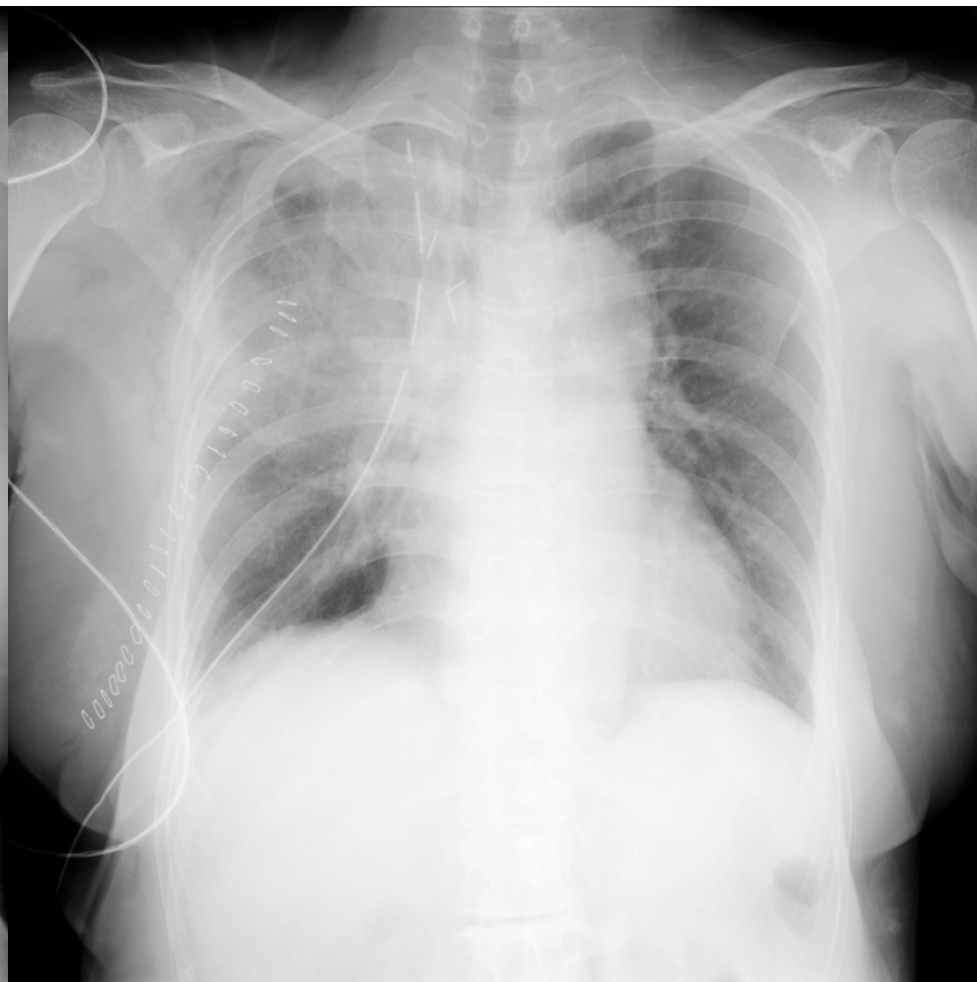


胸部単純CT

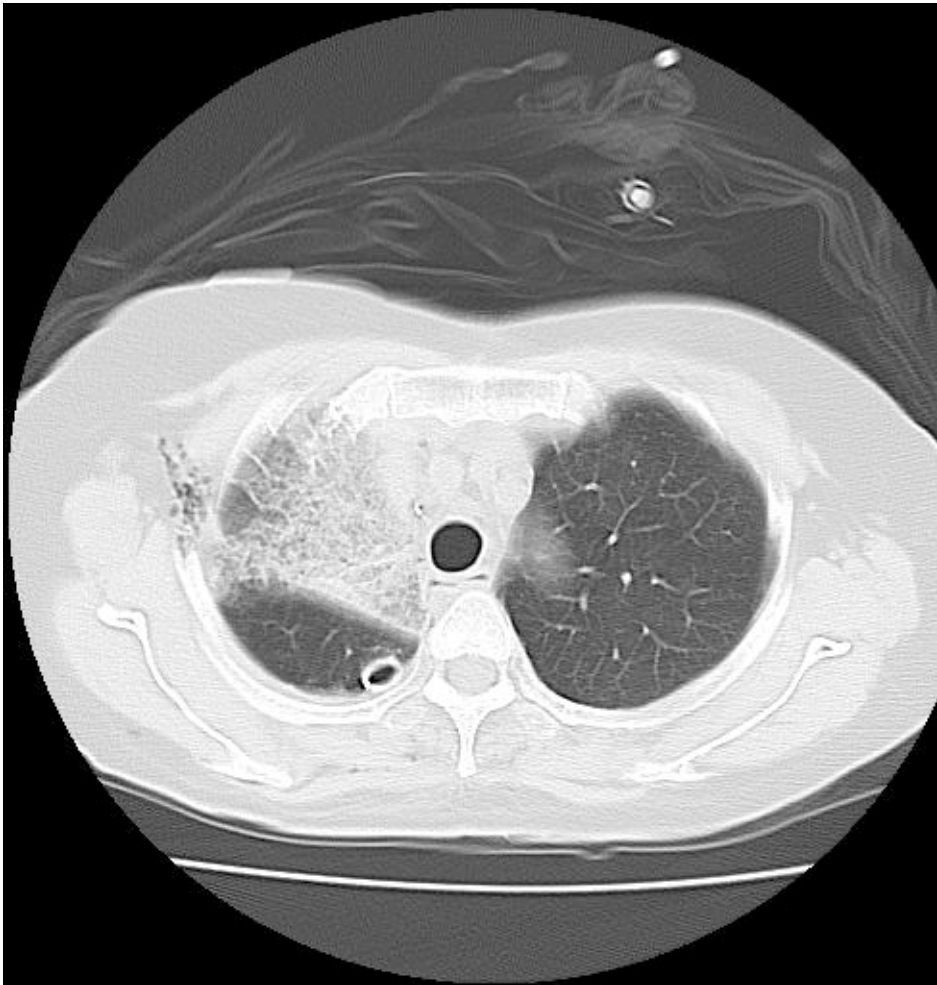
術前



胸部単純写真 (AP)  
術直後 (手術室)



胸部単純写真 (AP)  
1POD



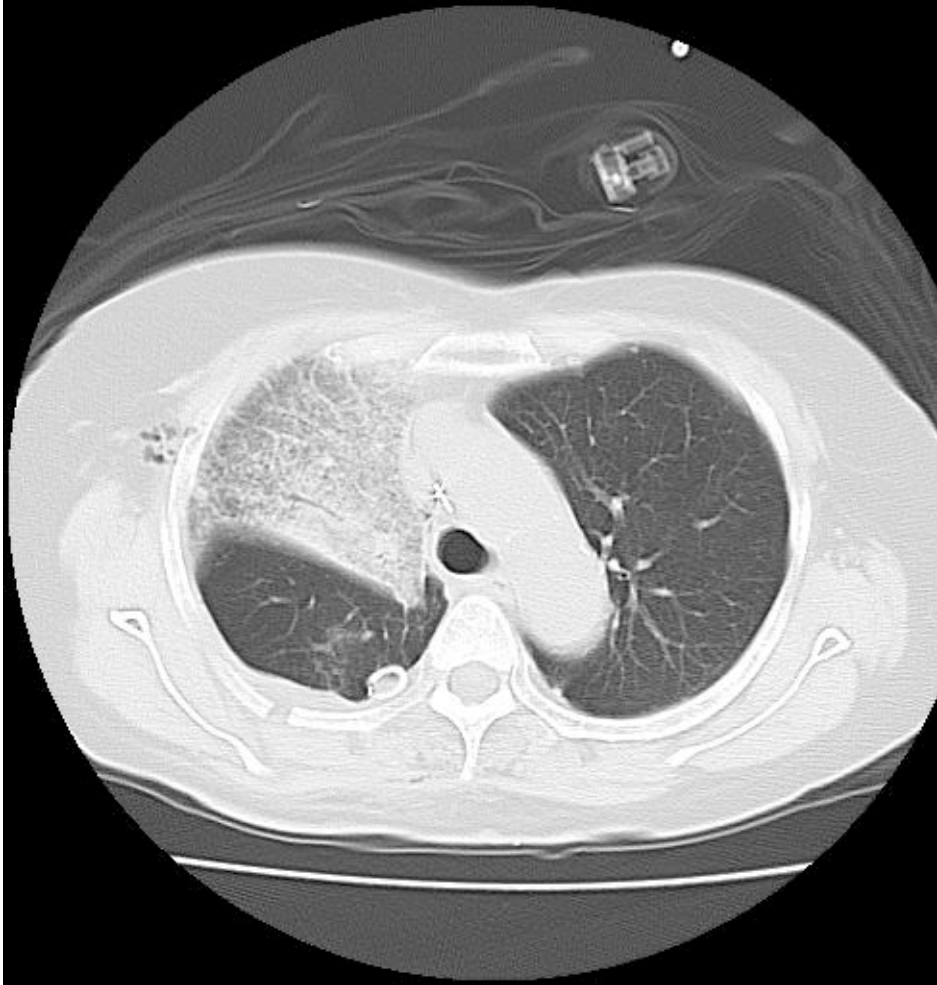
肺野条件



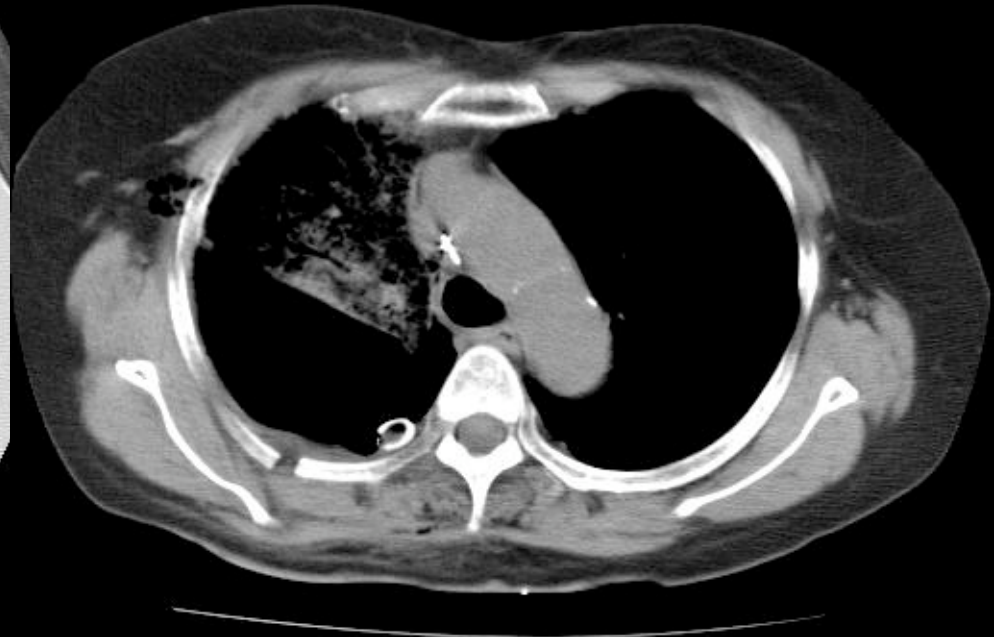
縦隔条件

胸部单纯CT (1POD)



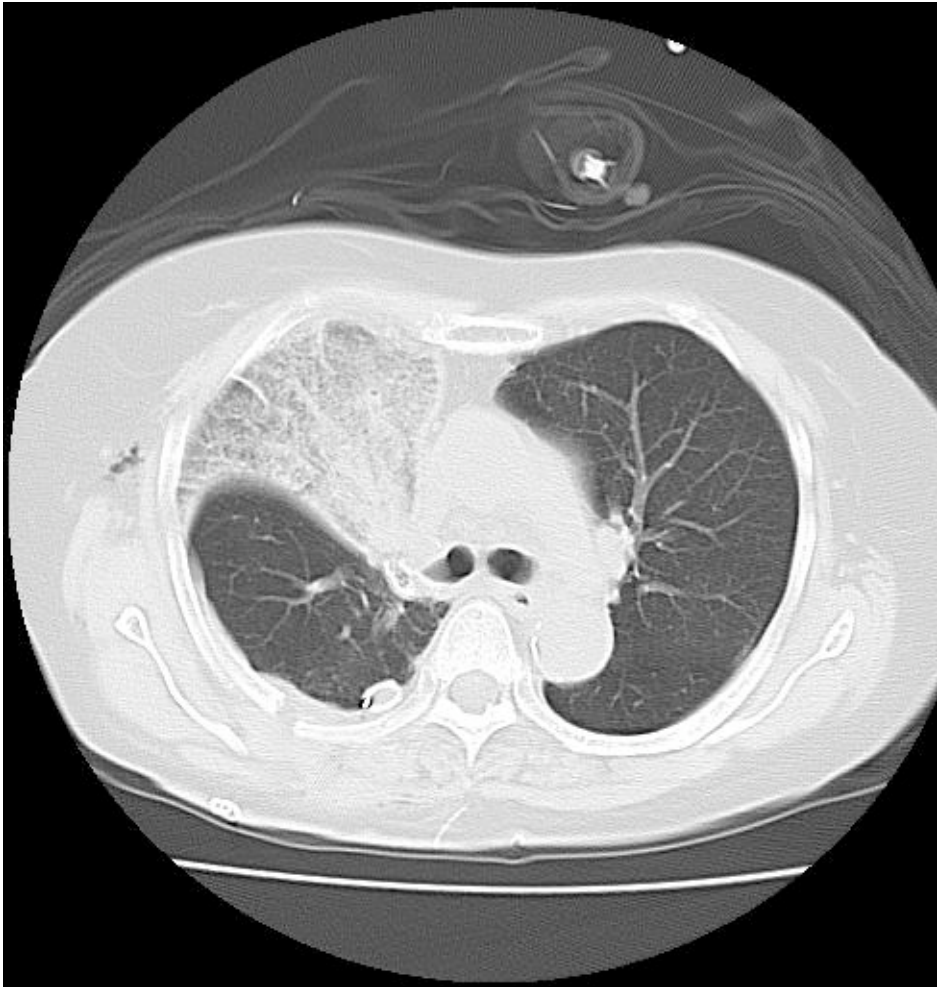


肺野条件



縦隔条件

胸部单纯CT (1POD)

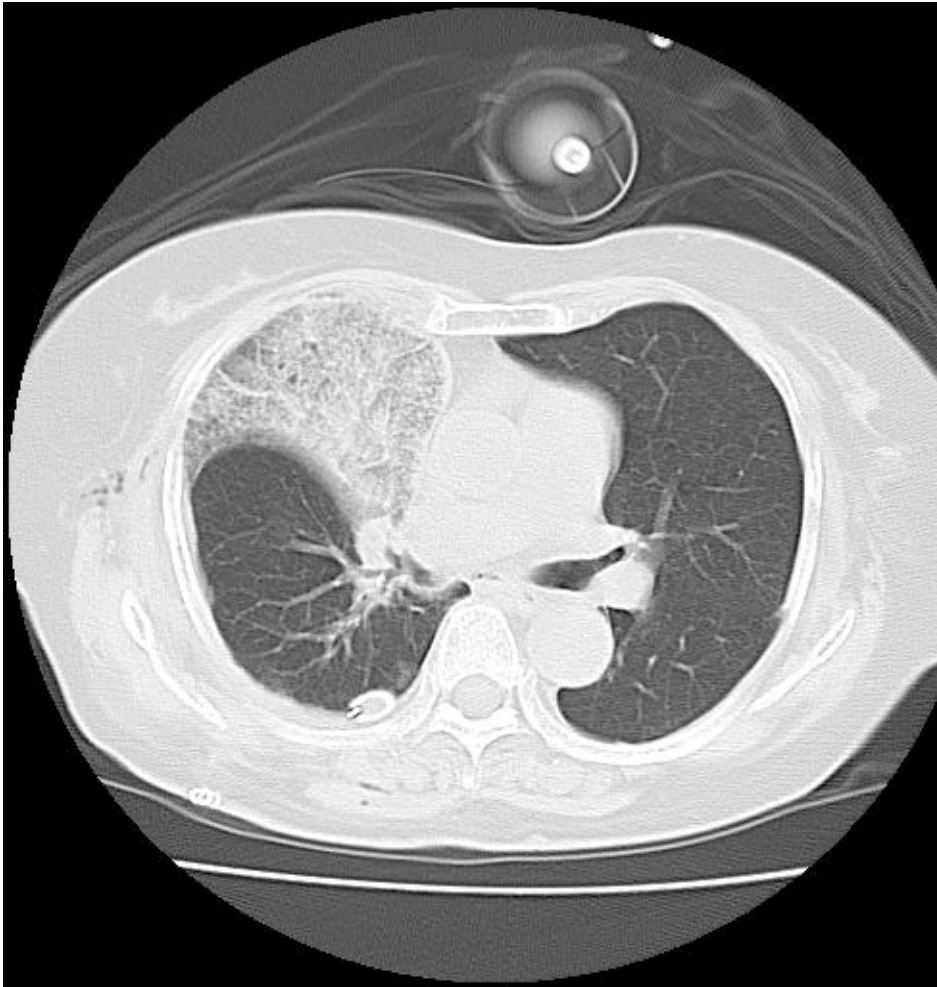


肺野条件



縦隔条件

胸部单纯CT (1POD)



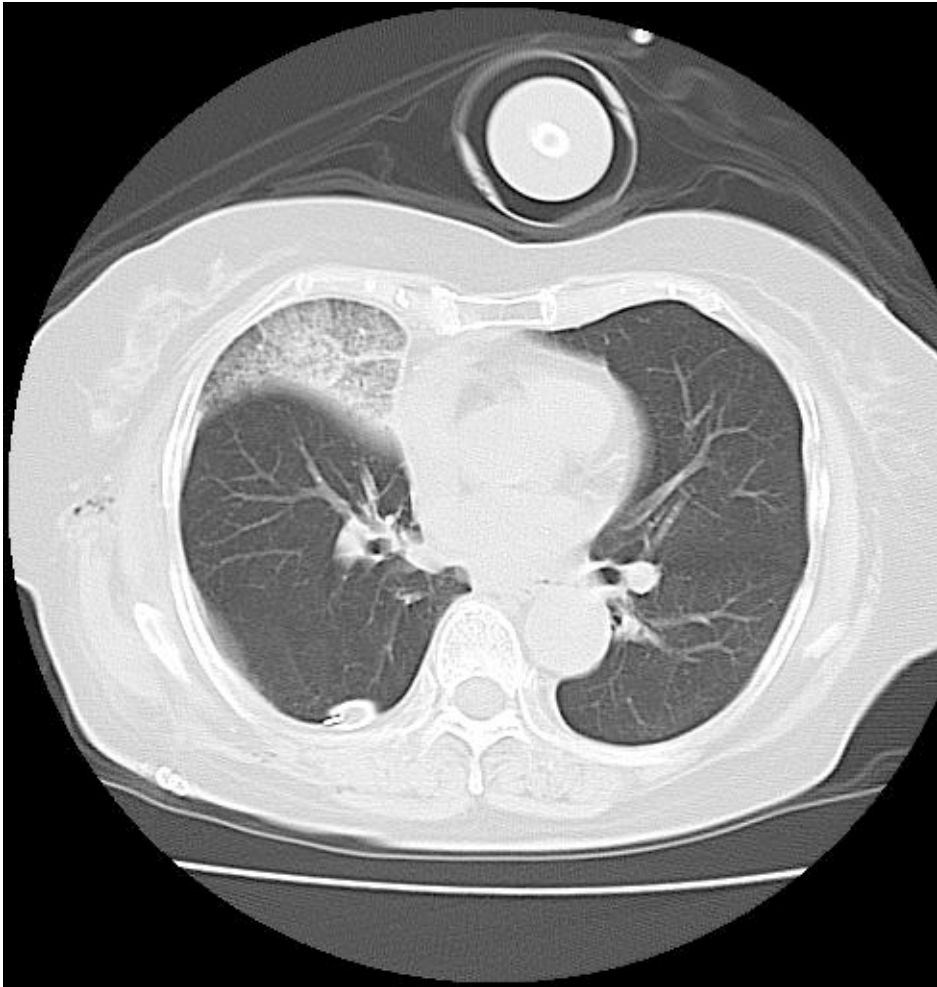
肺野条件



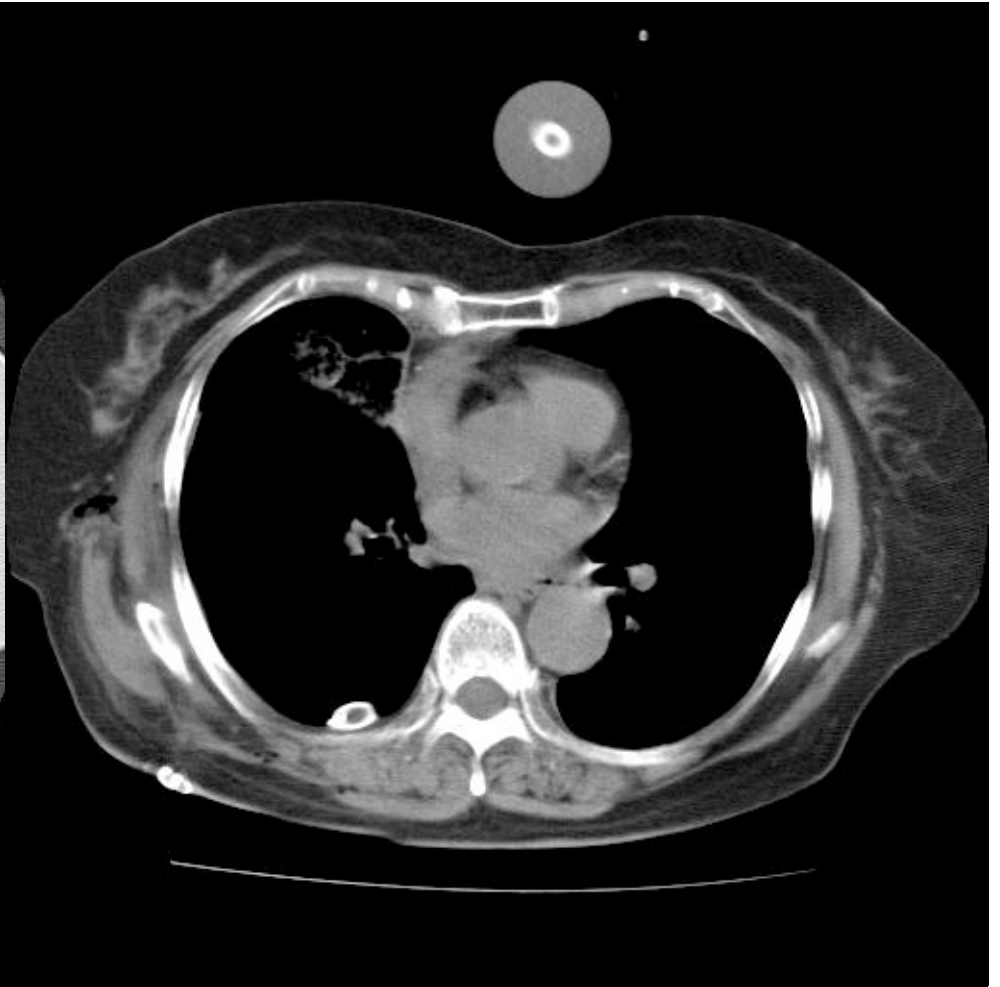
縦隔条件

胸部单纯CT (1POD)





肺野条件



縦隔条件

胸部单纯CT (1POD)