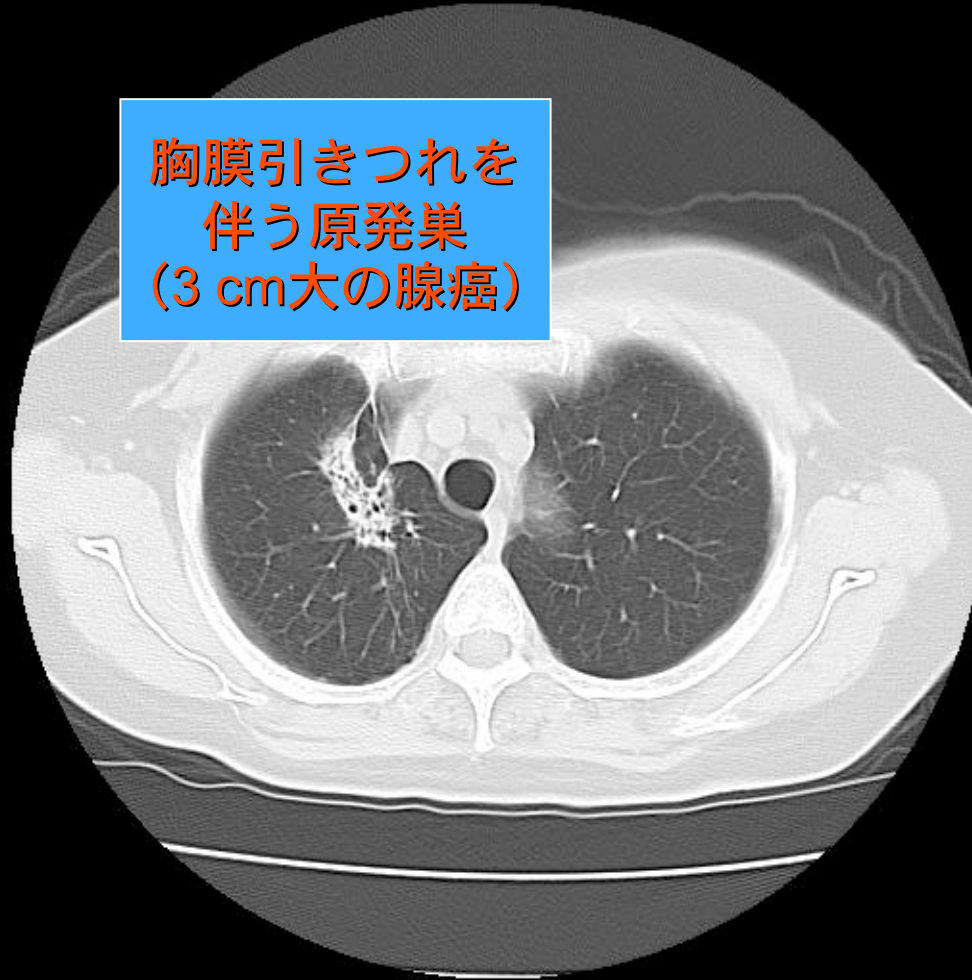
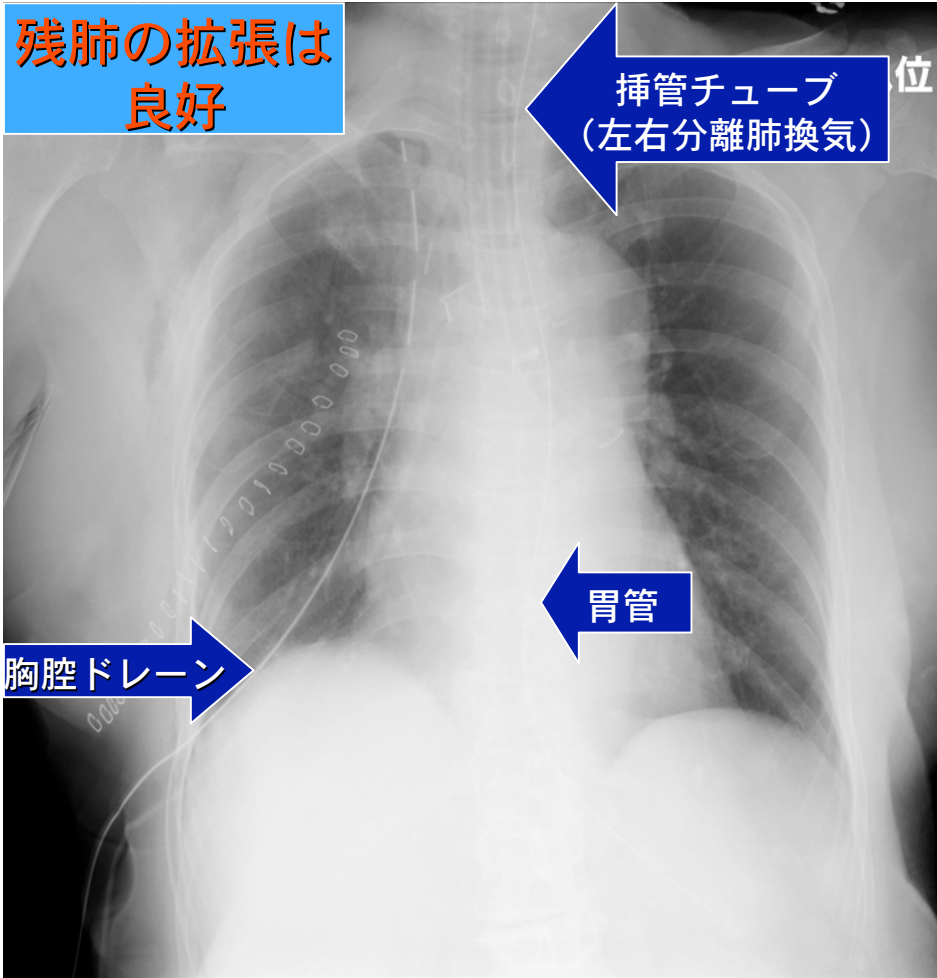


胸膜引きつれを
伴う原発巣
(3 cm大の腺癌)



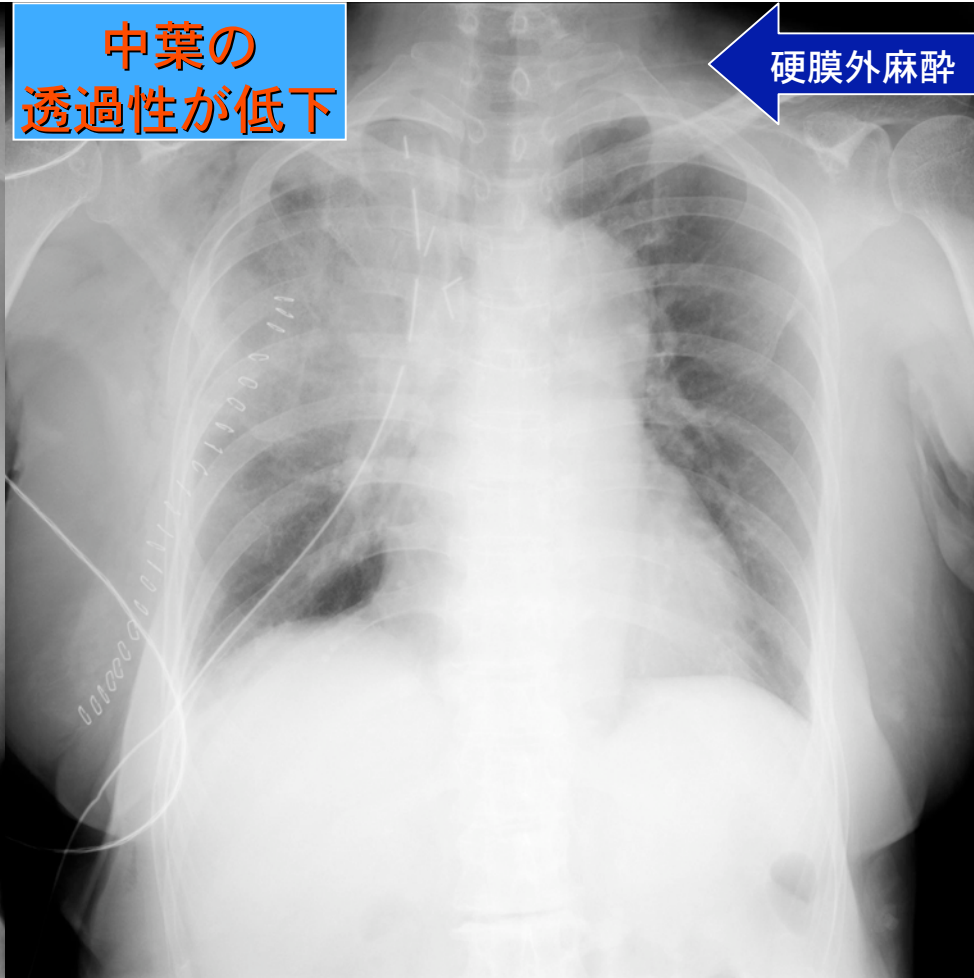
胸部単純CT

術前



胸部単純写真 (AP)

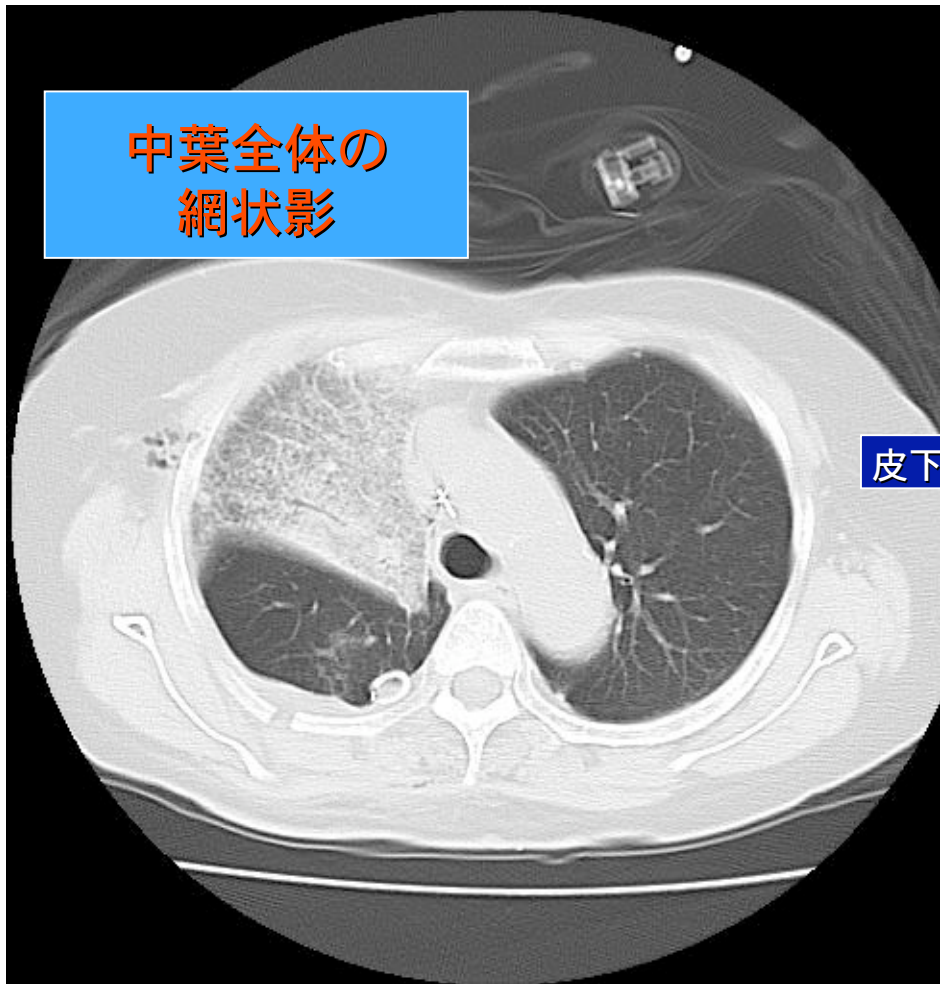
術直後 (手術室)



胸部単純写真 (AP)

1POD

中葉全体の
網状影

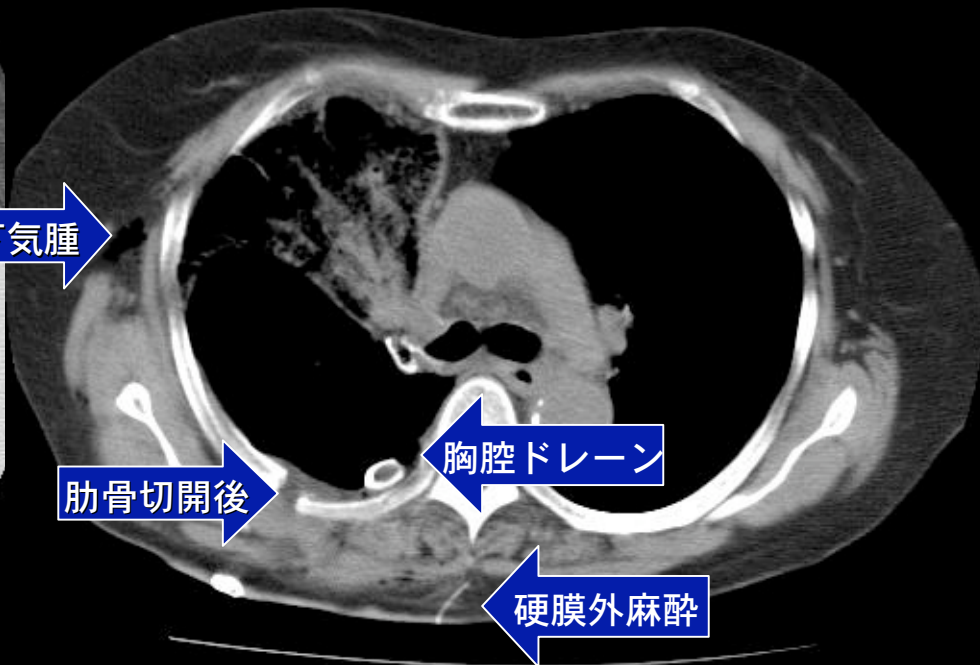


皮下気腫

肋骨切開後

胸腔ドレーン

硬膜外麻酔

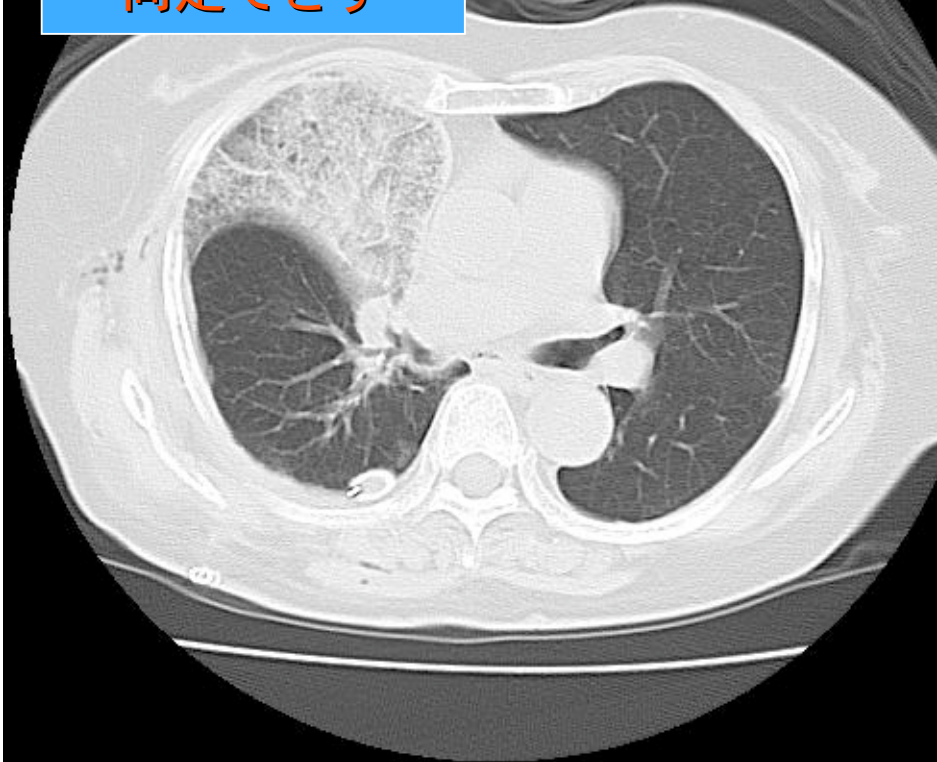


肺野条件

縦隔条件

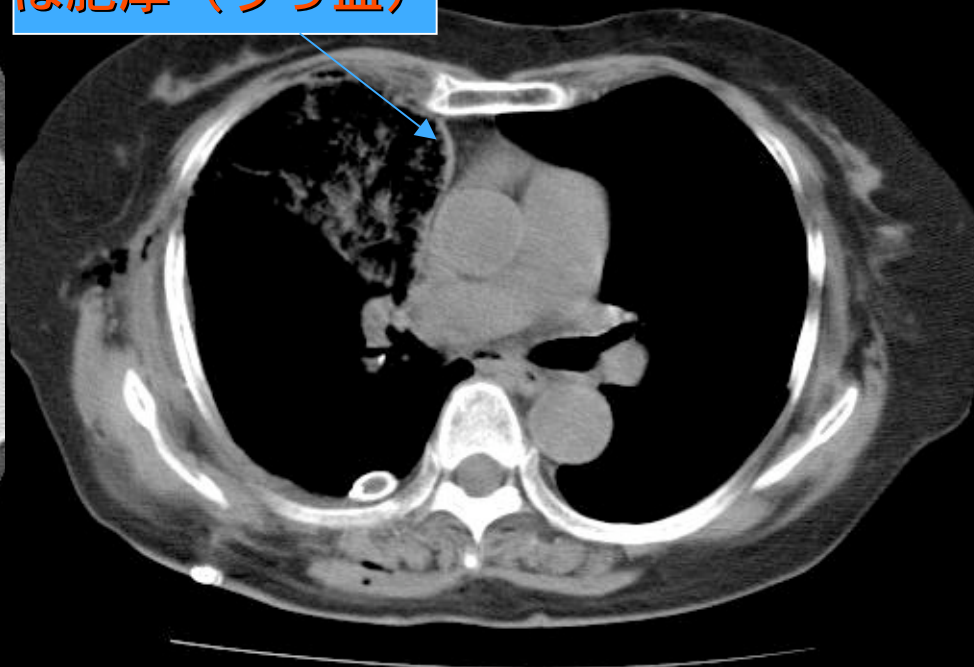
胸部単純CT (1POD)

中葉の気管支を
同定できず



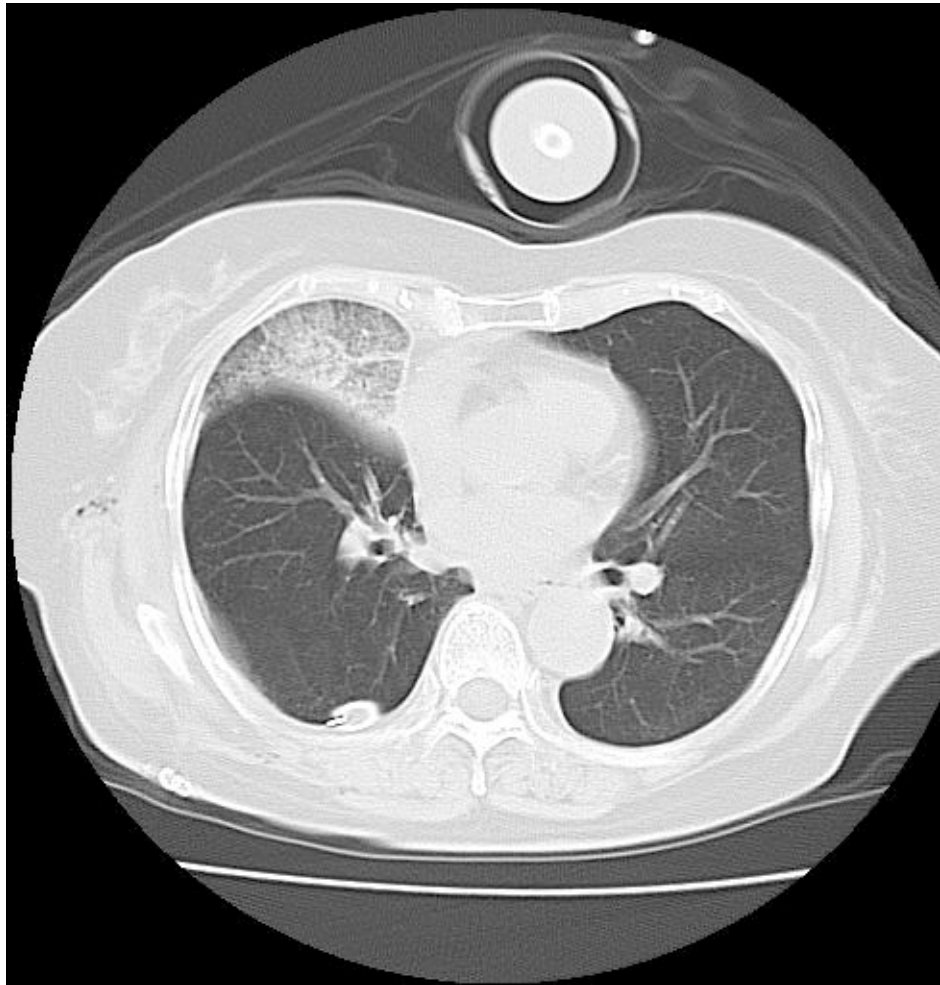
肺野条件

縦隔側の胸膜
は肥厚（うっ血）

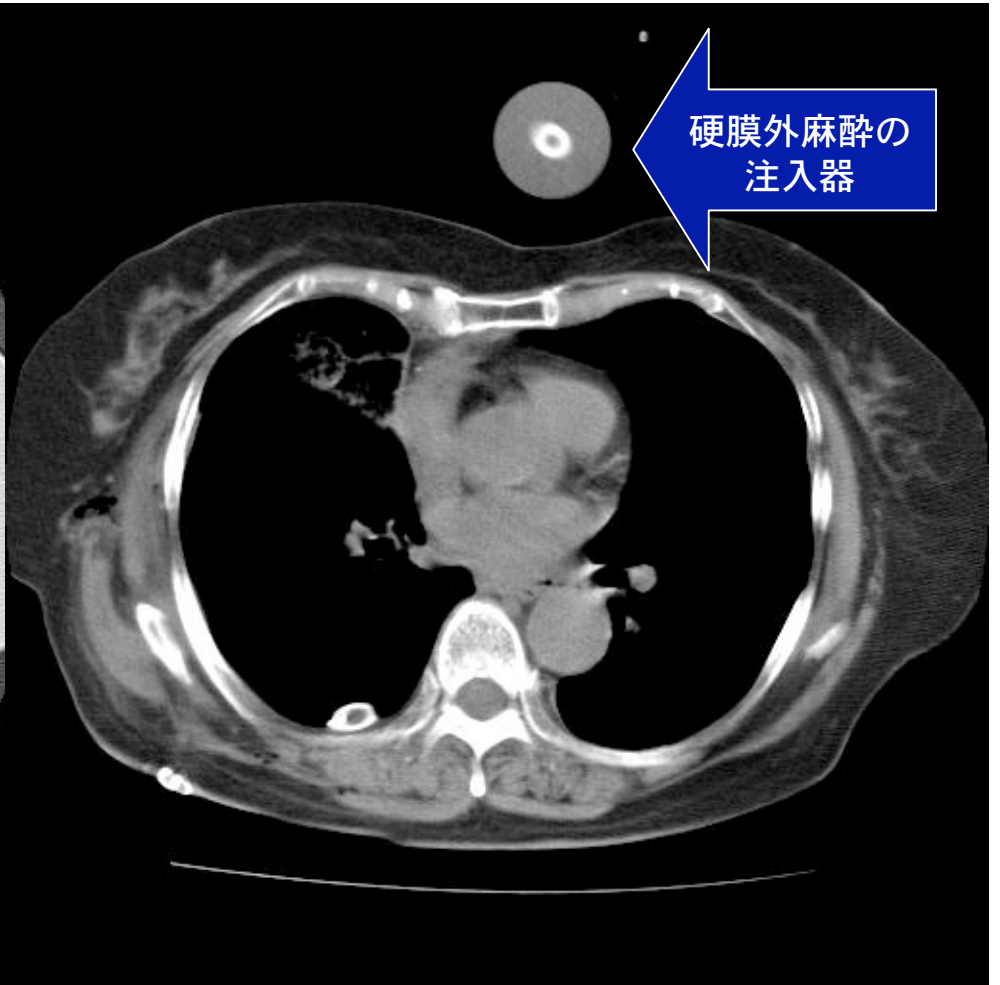


縦隔条件

胸部単純CT (1POD)

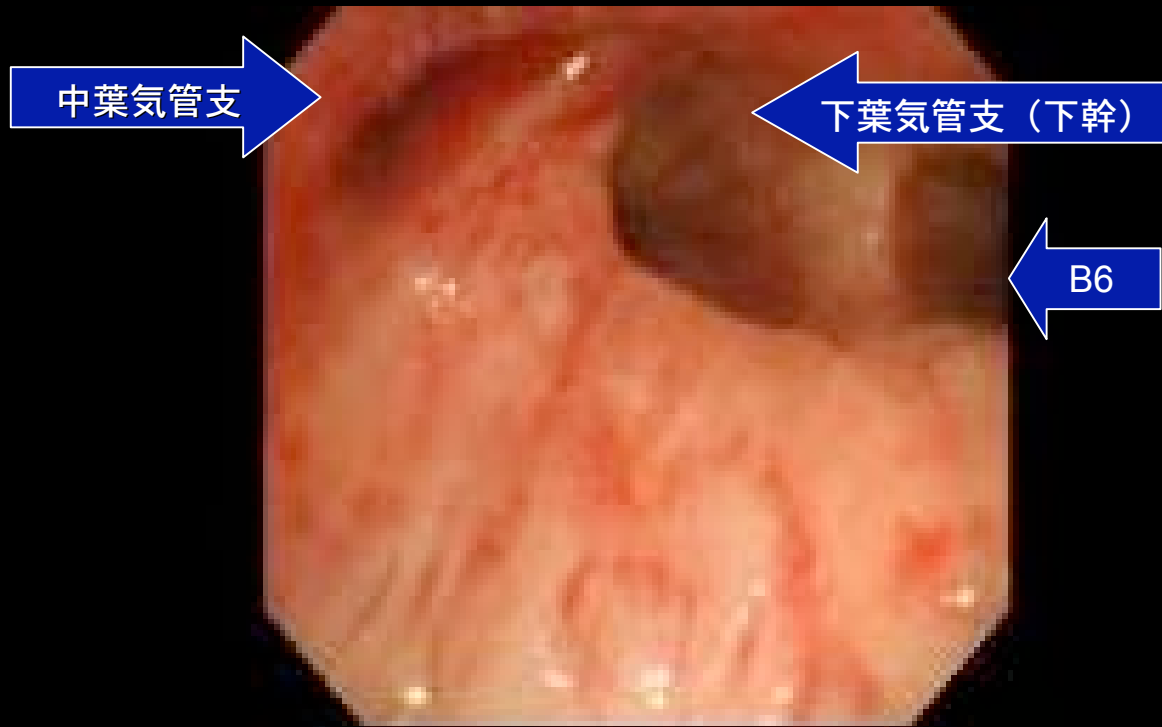


肺野条件



縦隔条件

胸部単純C T (1POD)



気管支鏡 (1POD)

摘出標本



右上葉 (pT1N0)



中葉