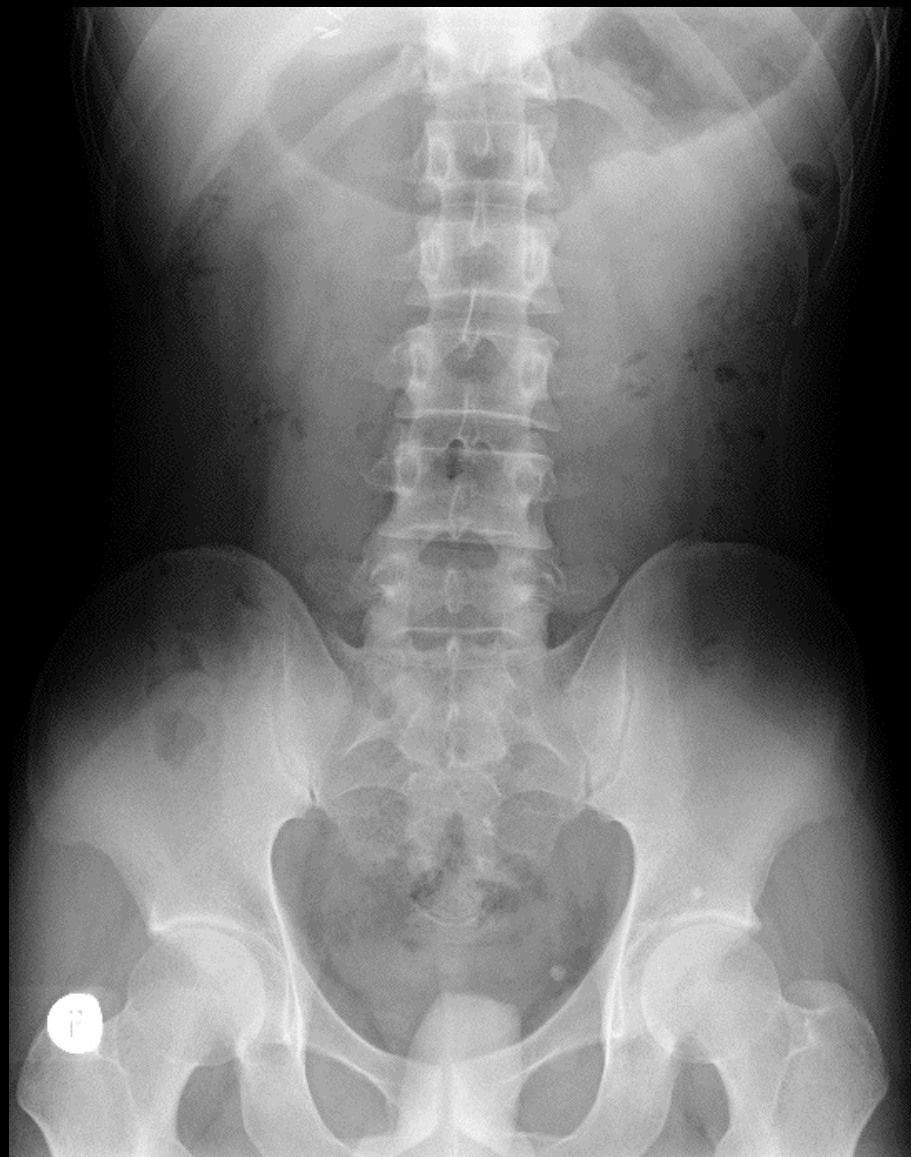
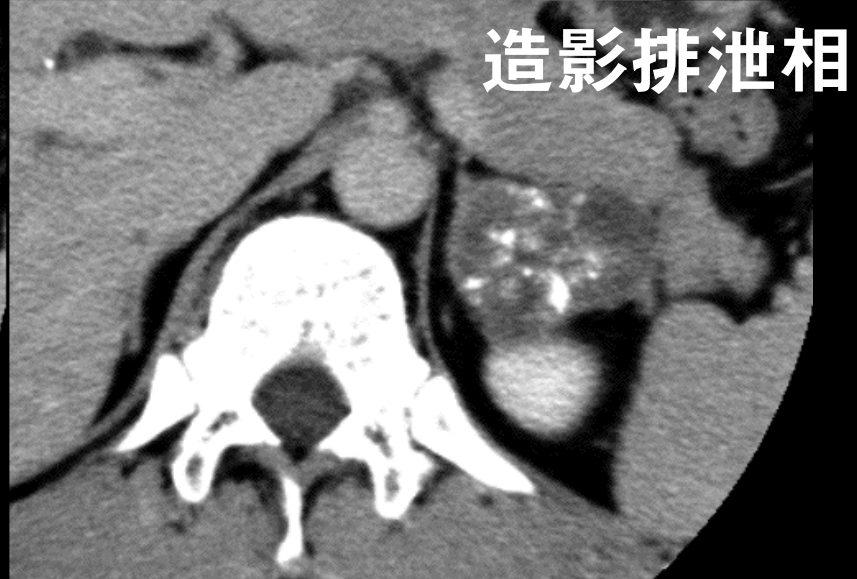
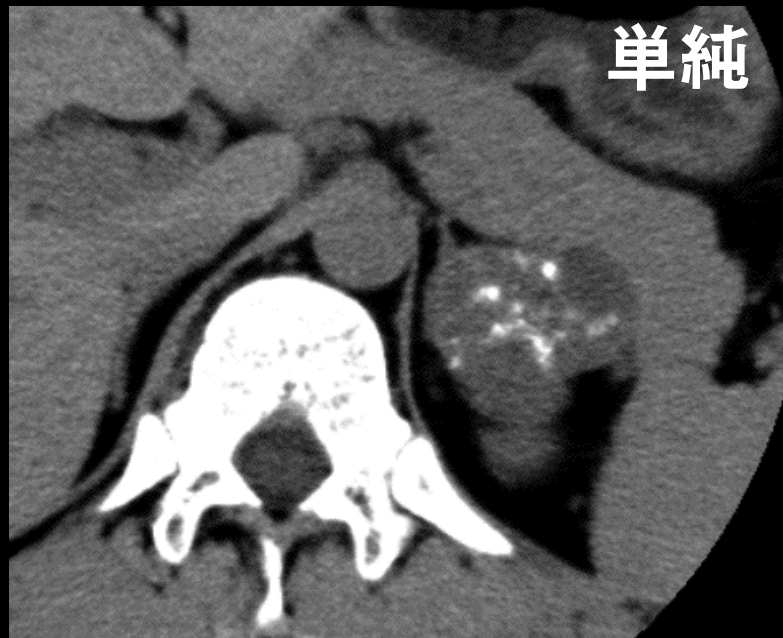


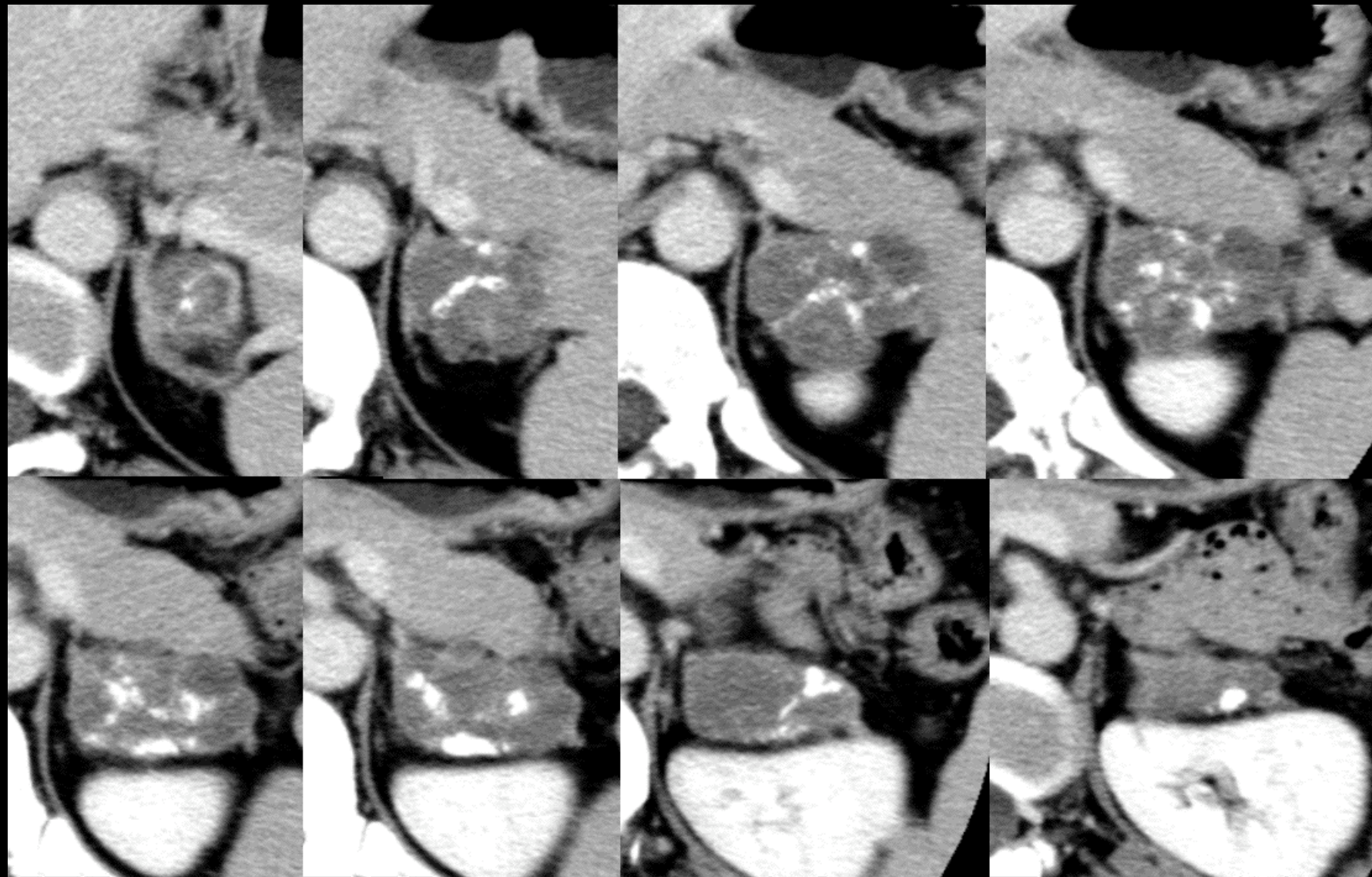
# 腹部X-P (6月)



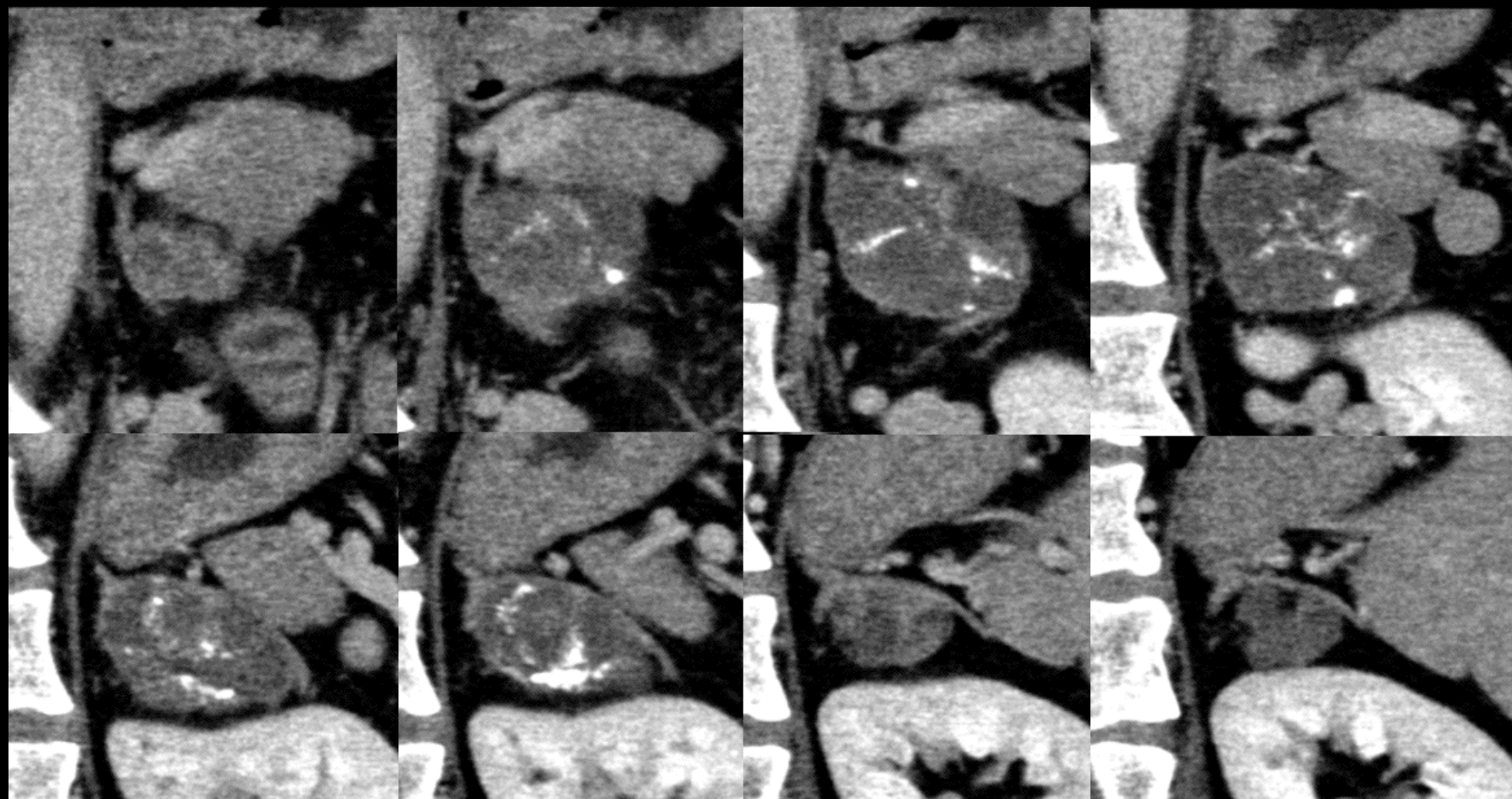
# 腹部CT (4月)



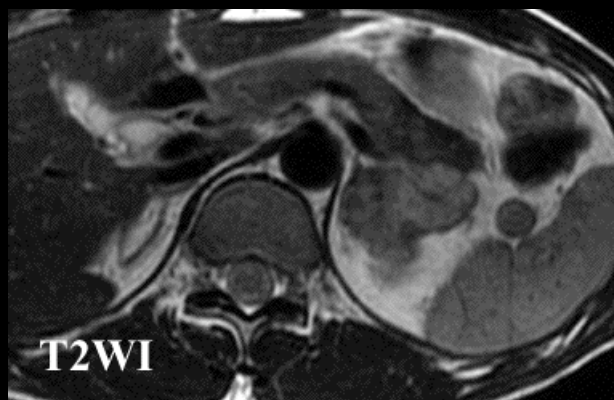
# 腹部造影CT 門脈相 連続画像 (4月)



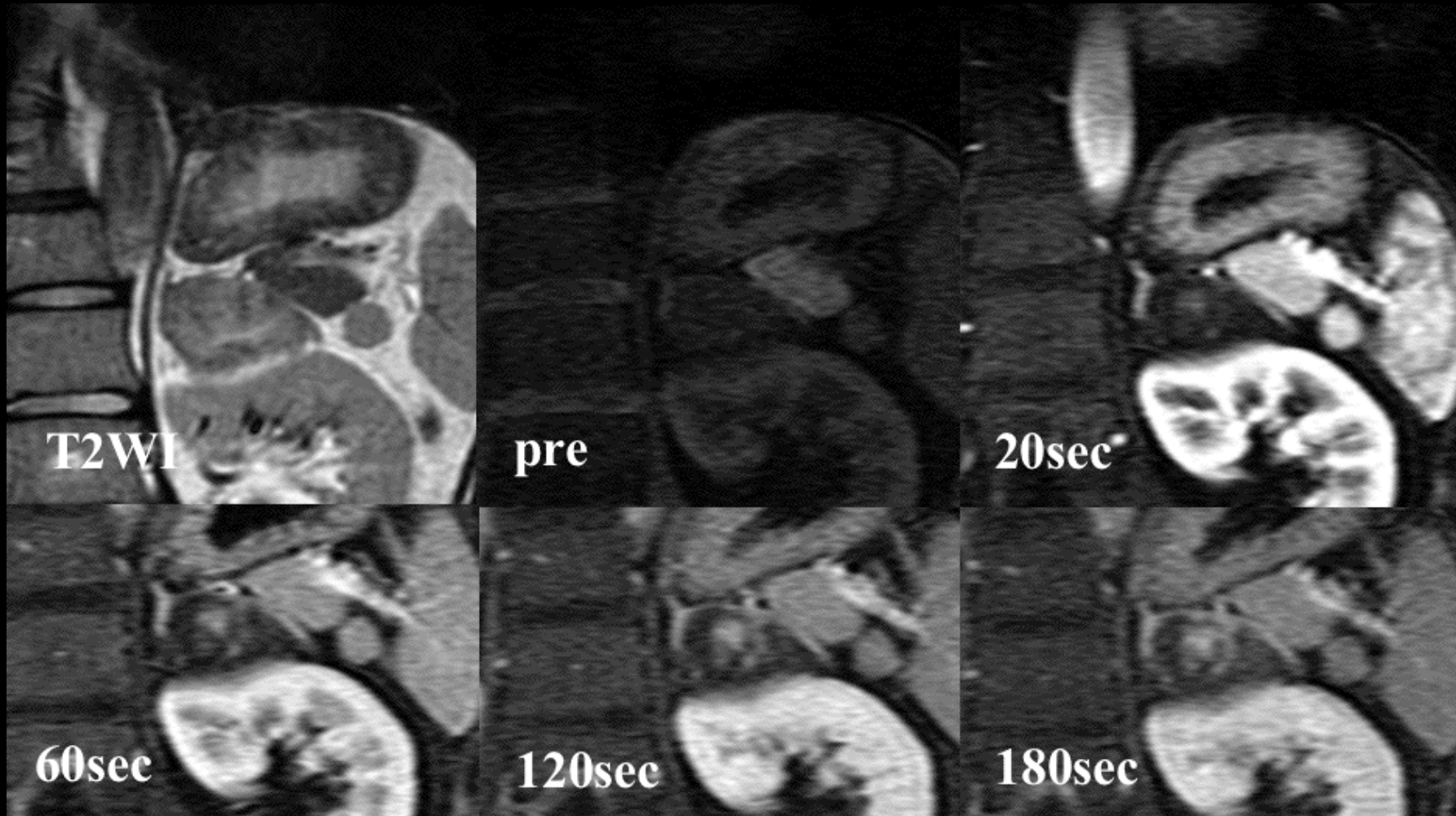
# 腹部造影CT 冠状断像 (6月)



# 腹部MRI (4月)



# 腹部MRI dynamic study (4月)



# 腹部MRI 脂肪抑制并用造影T1WI (4月)

