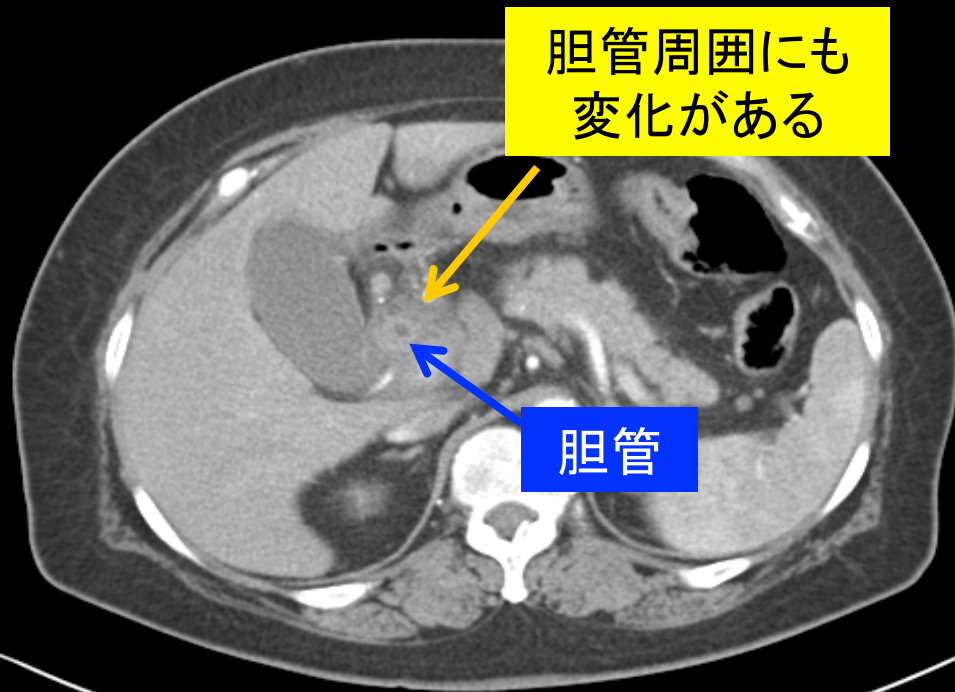
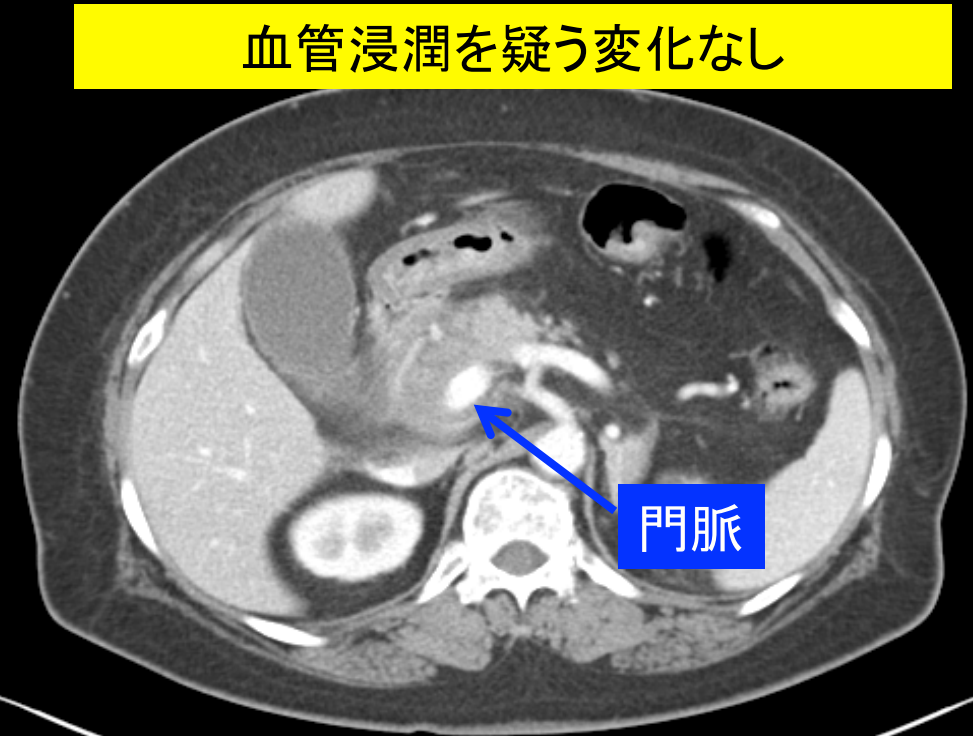


造影CT(造影剤注射後30秒)

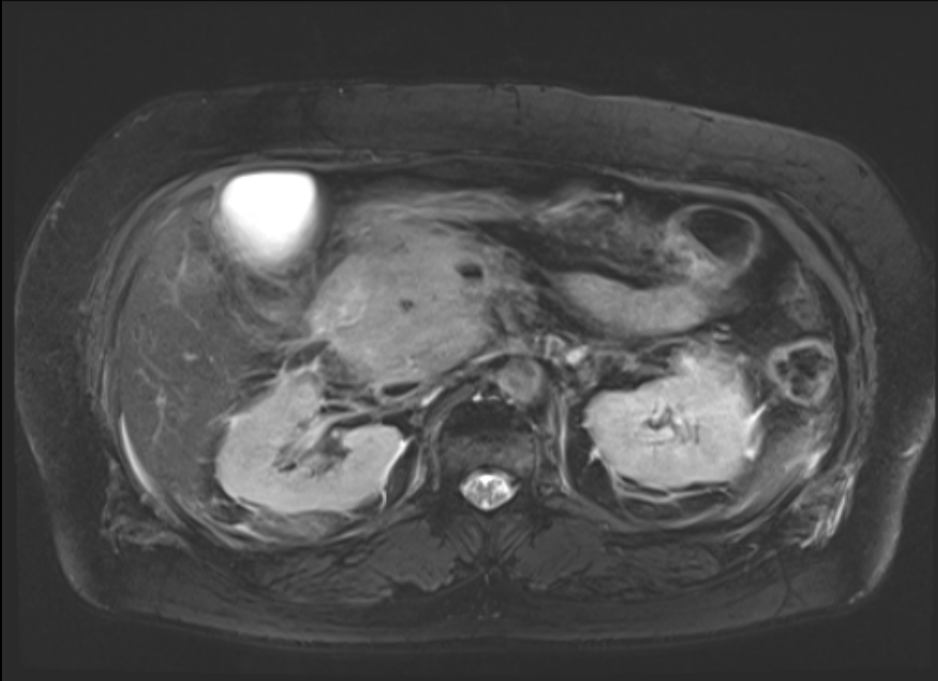


造影CT(造影剤注射後60秒)

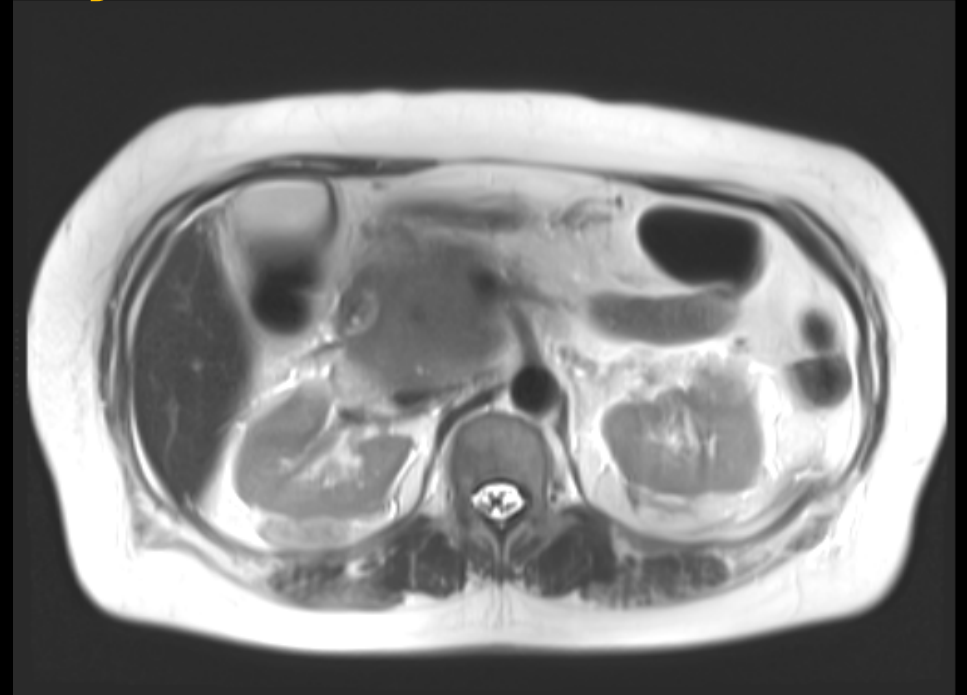


# MRI

病変内は均一



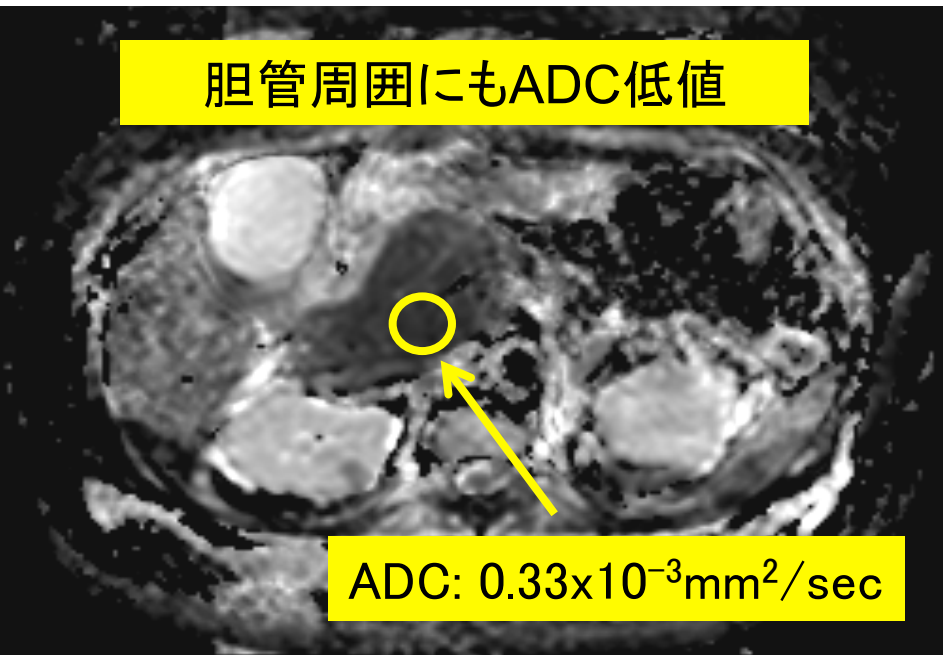
脂肪抑制併用T2強調像



HASTE画像

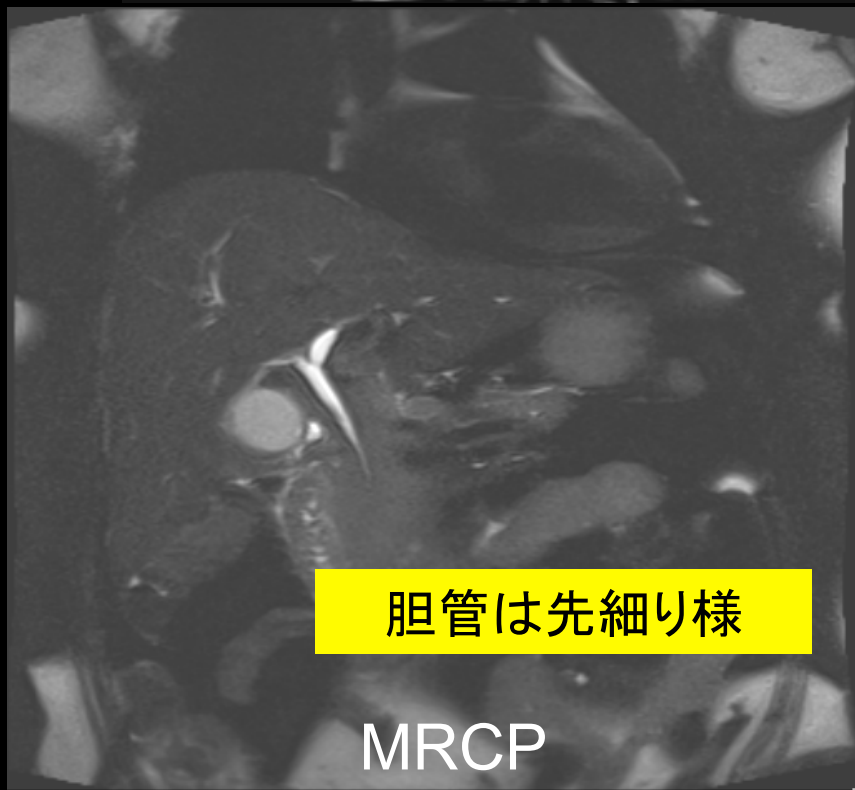
MRI

胆管周囲にもADC低値



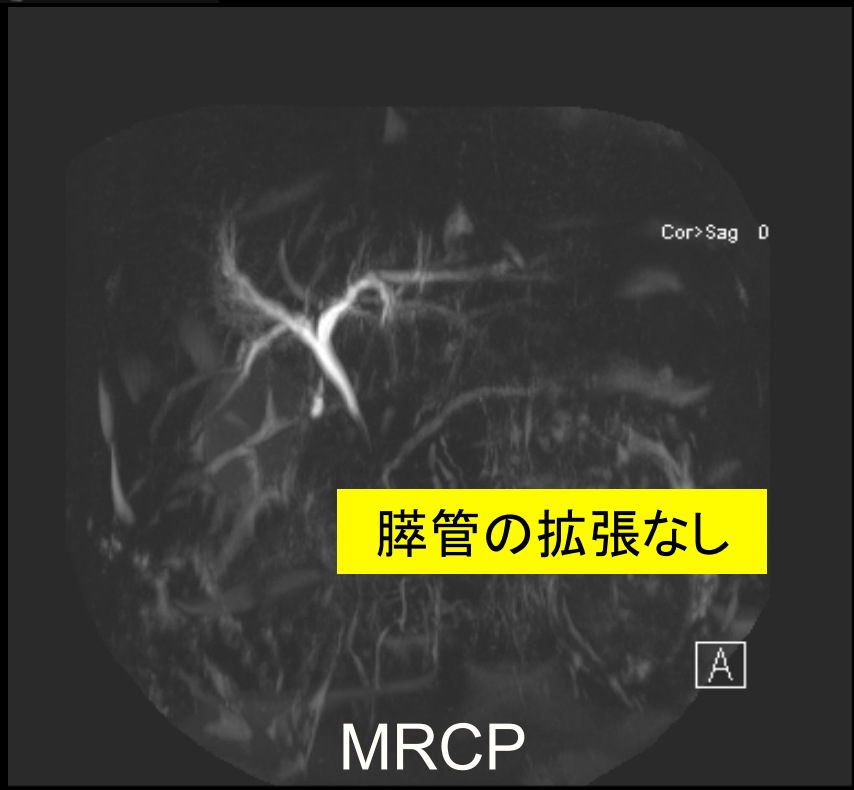
ADC:  $0.33 \times 10^{-3} \text{mm}^2/\text{sec}$

ADCmap



胆管は先細り様

MRCP



膵管の拡張なし

MRCP

