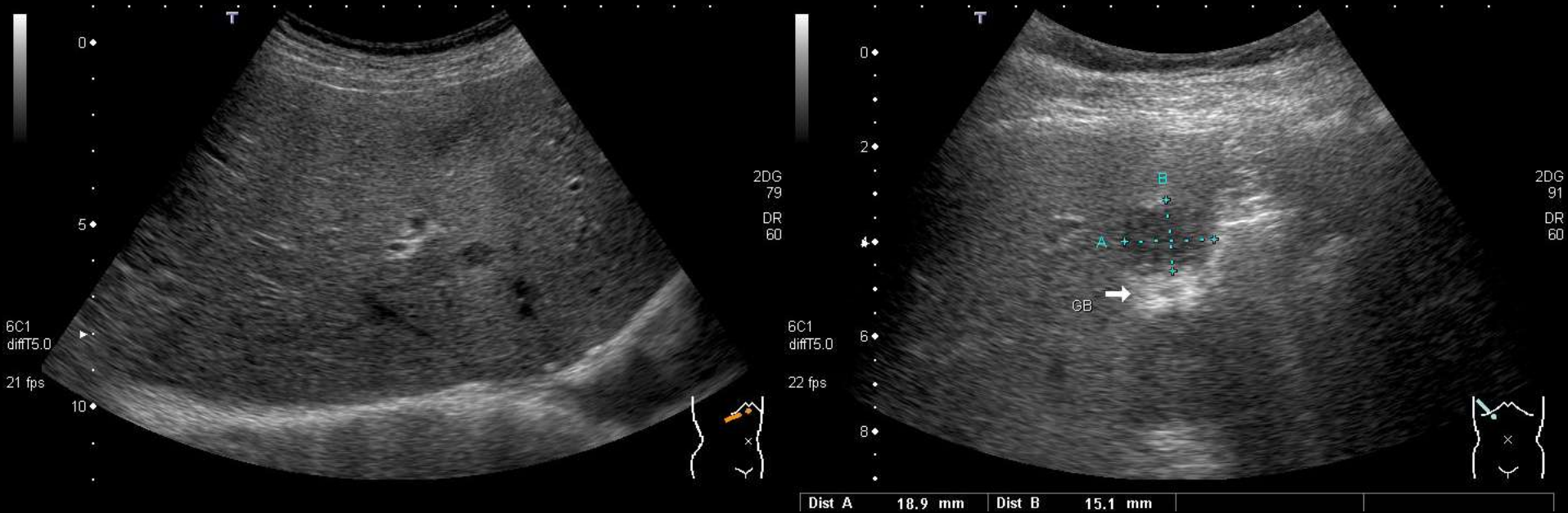
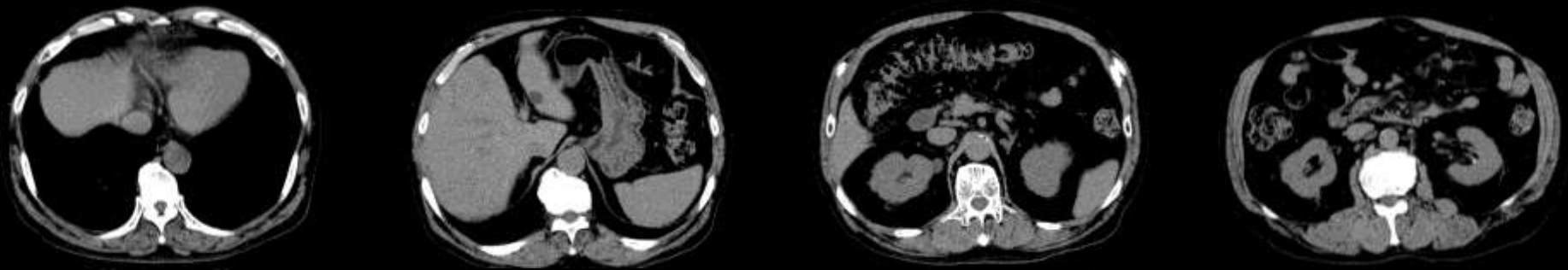


腹部超音波検査



単純CT



造影CT
早期動脈相



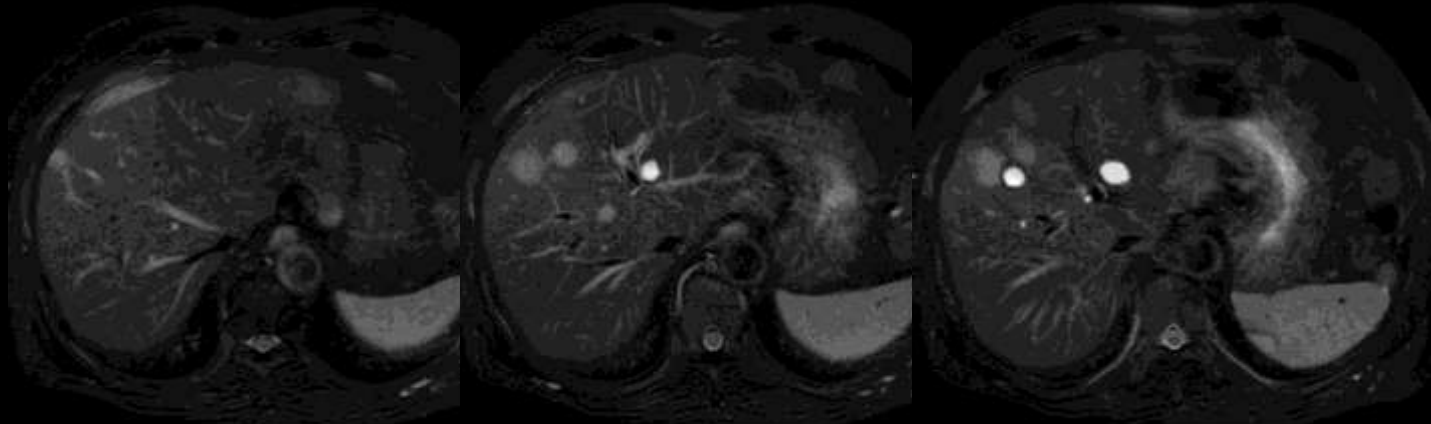
造影CT
後期動脈相



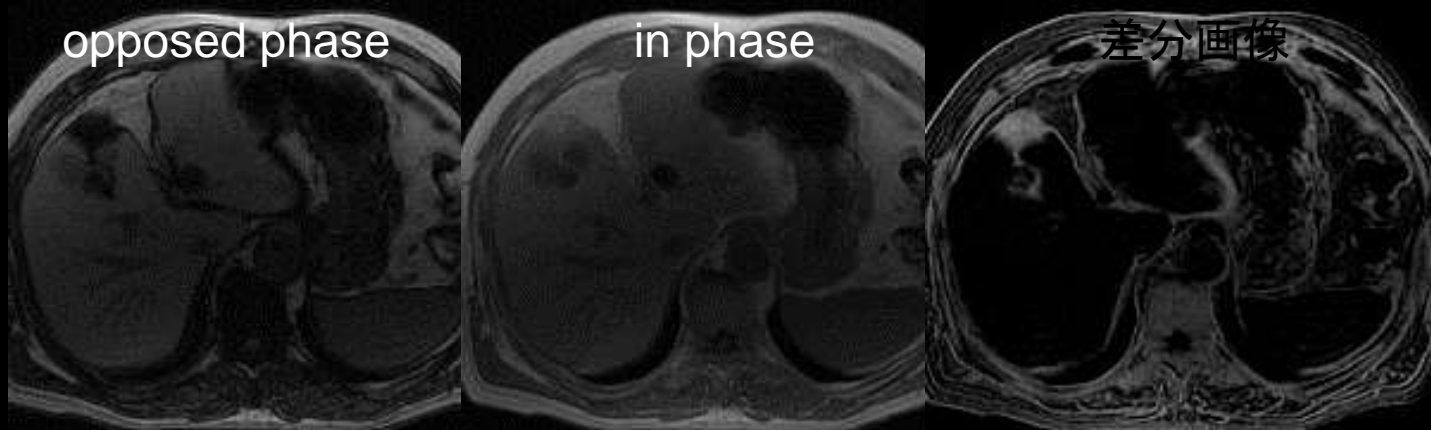
造影CT
肝靜脈相



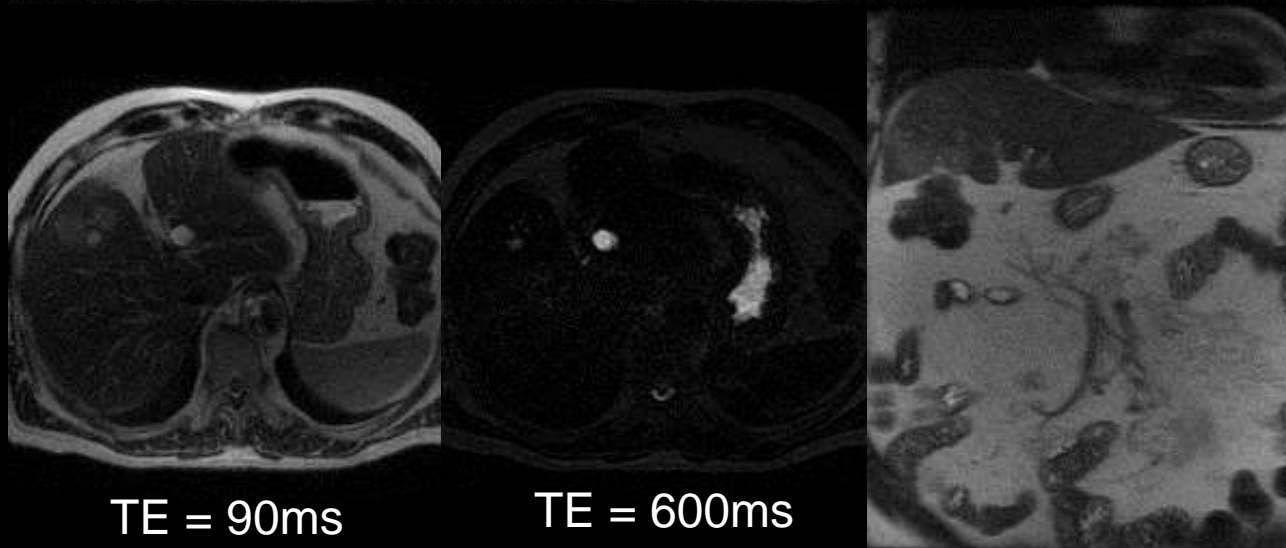
MRI 脂肪抑制
T2強調像



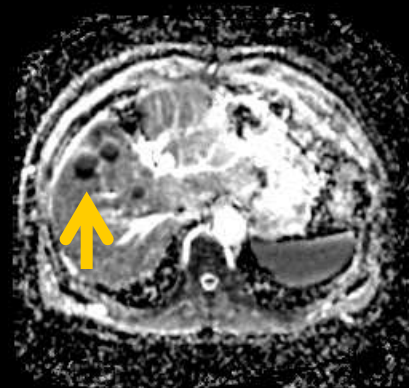
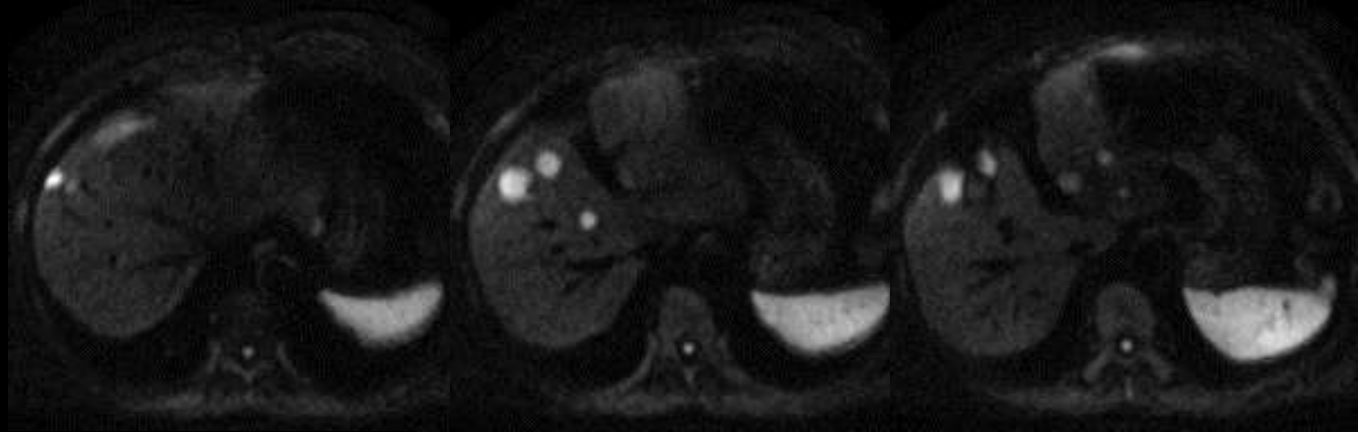
GRE T1強調像
in/opposed
phase



SSFSE



拡散強調像
($b = 800\text{s/mm}^2$)



ADC $0.625 \times 10^{-3} \text{ mm}^2/\text{s}$

Gd-EOB-DTPA
肝胆道相
(20分後)

