



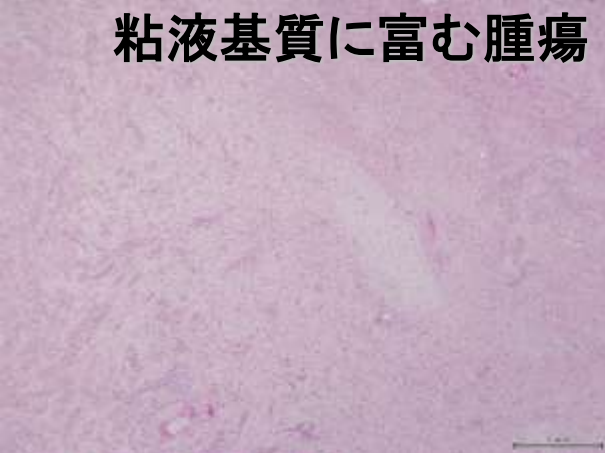
20

P10-2120

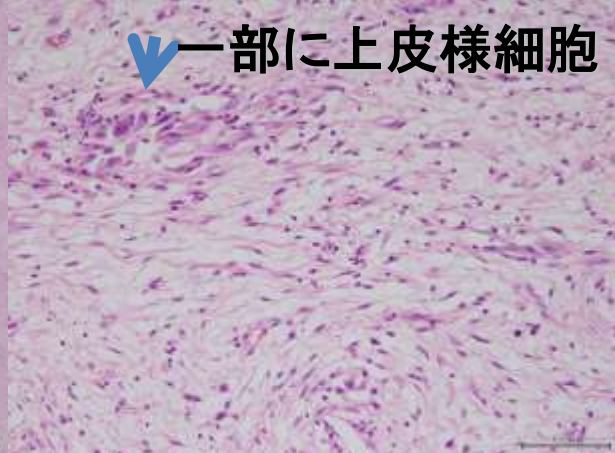
40

肉眼的に嚢胞変性, 粘液変性の強い腫瘍であった。

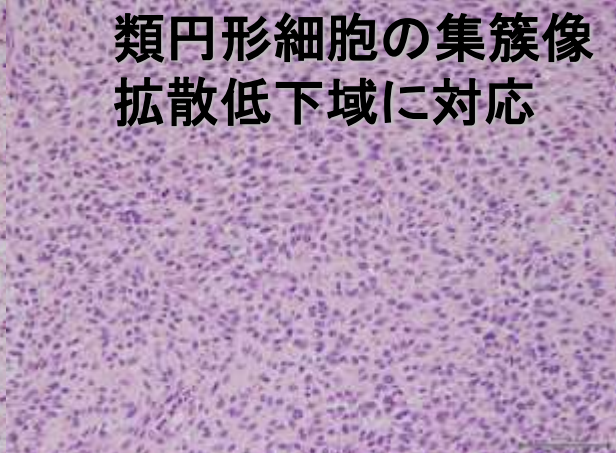
粘液基質に富む腫瘍



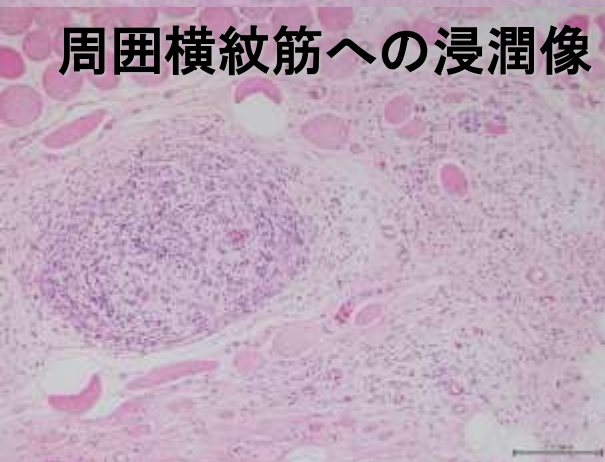
一部に上皮様細胞



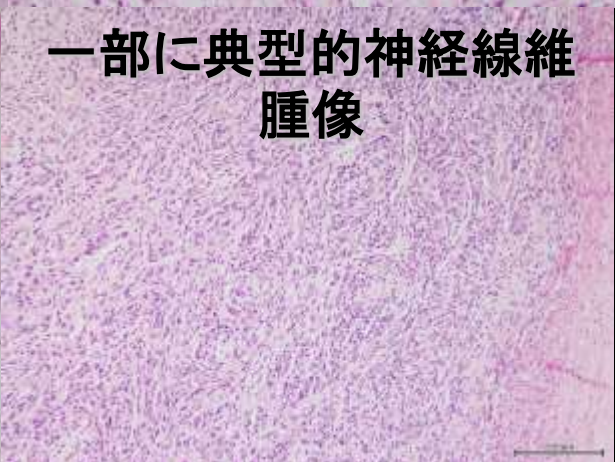
類円形細胞の集簇像
拡散低下域に対応



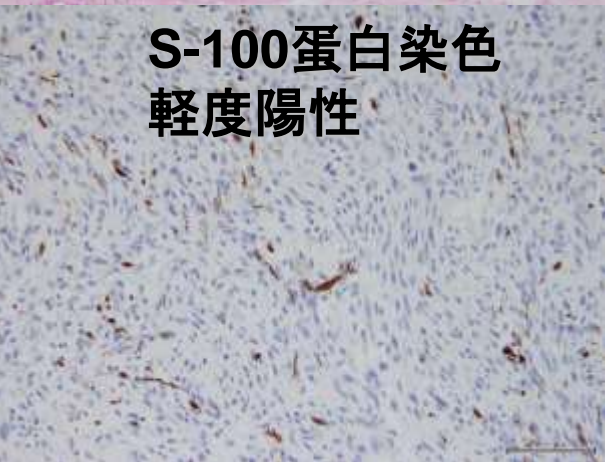
周囲横紋筋への浸潤像



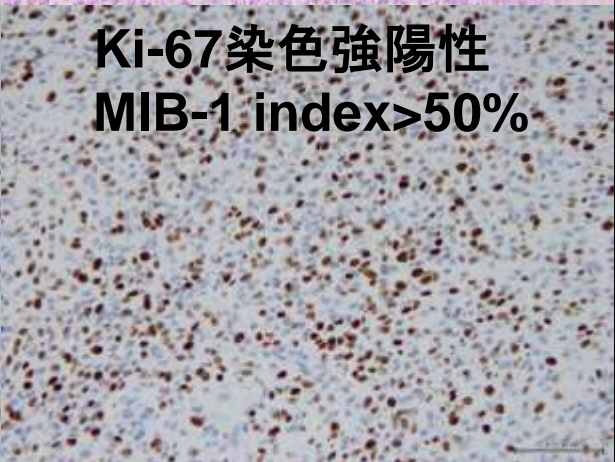
一部に典型的神経線維腫像

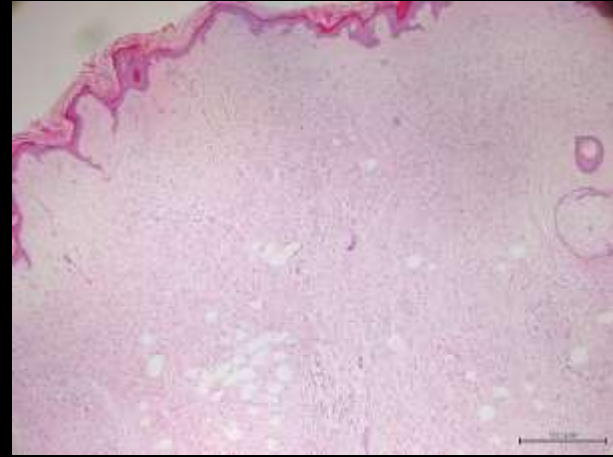


S-100蛋白染色
軽度陽性



Ki-67染色強陽性
MIB-1 index>50%





神経線維腫