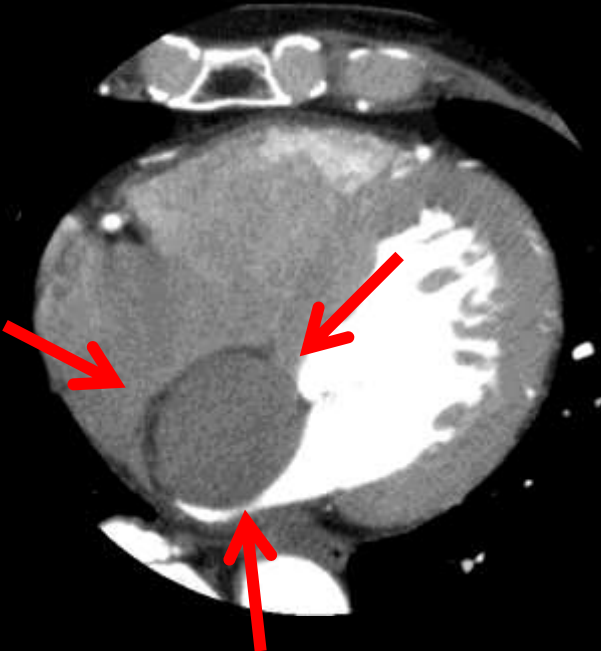
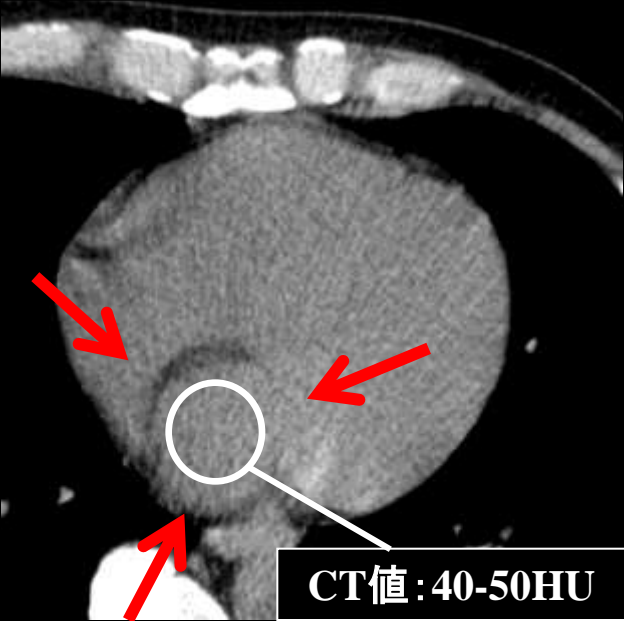


冠動脈CT



拡散能軽度低下?

T2WI 均一な高信号

T1WI
均一な淡い高信号

DWI Axi

FST2 短軸像

FST1 短軸像

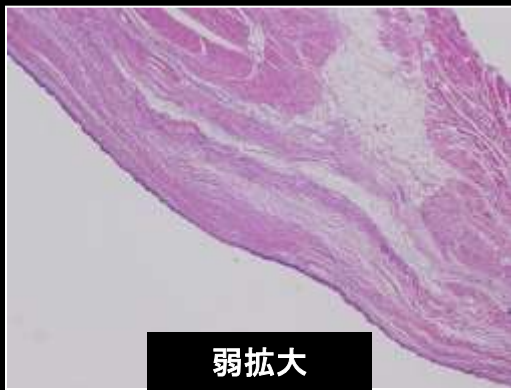
造影MRI

境界明瞭
内部に増強効果なし

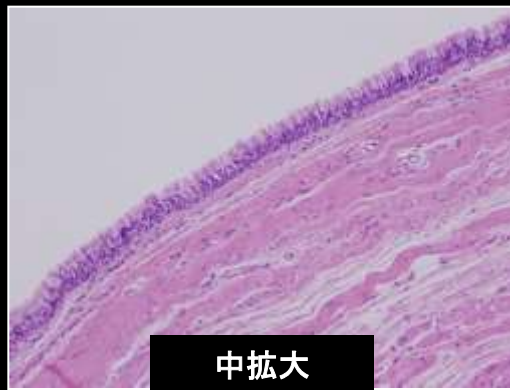
造影T1 短軸像

造影T1
水平長軸像

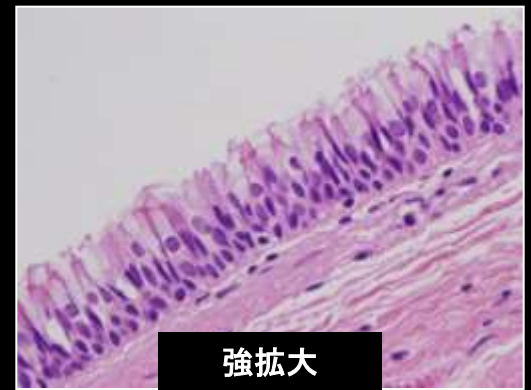
造影T1
垂直長軸像



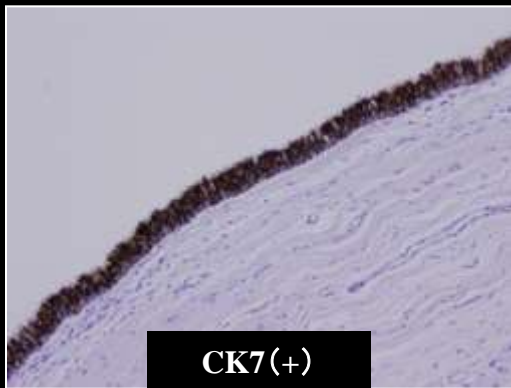
弱拡大



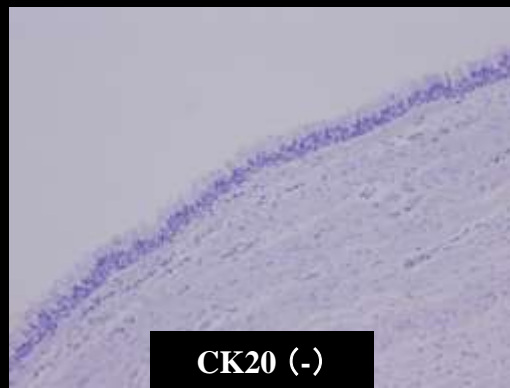
中拡大



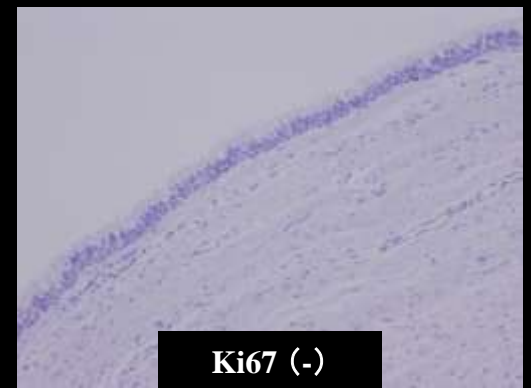
強拡大



CK7(+)



CK20 (-)



Ki67 (-)

