

# 造影CT



造影前



造影後 平衡相

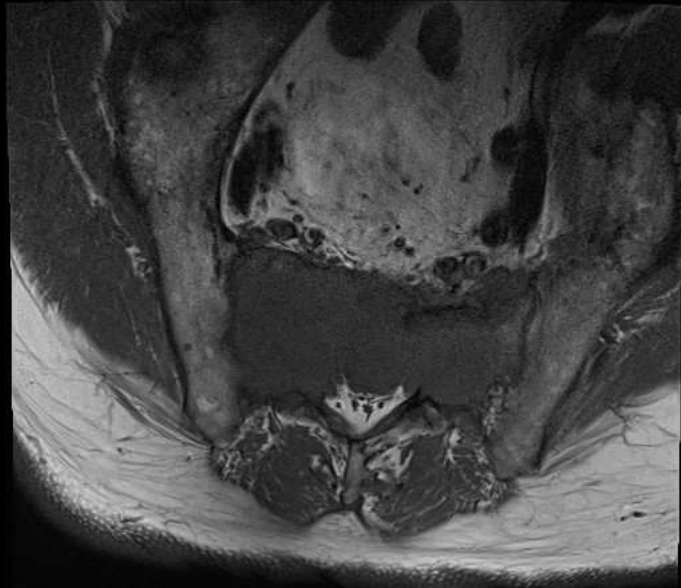


骨条件

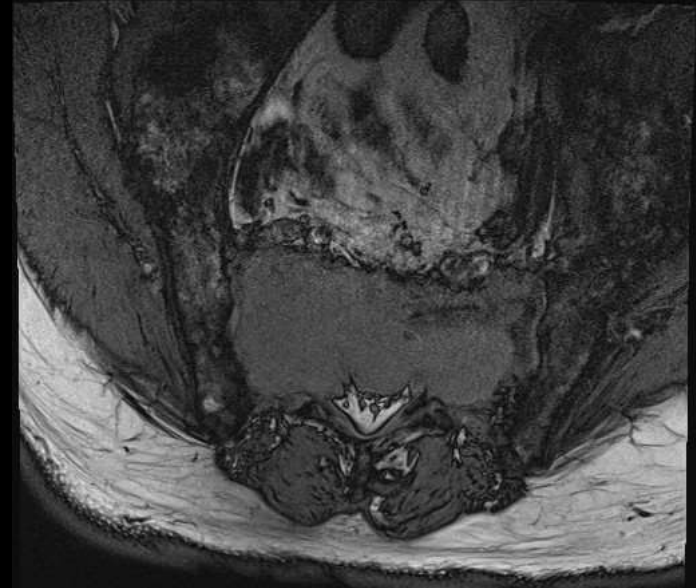


軟部条件

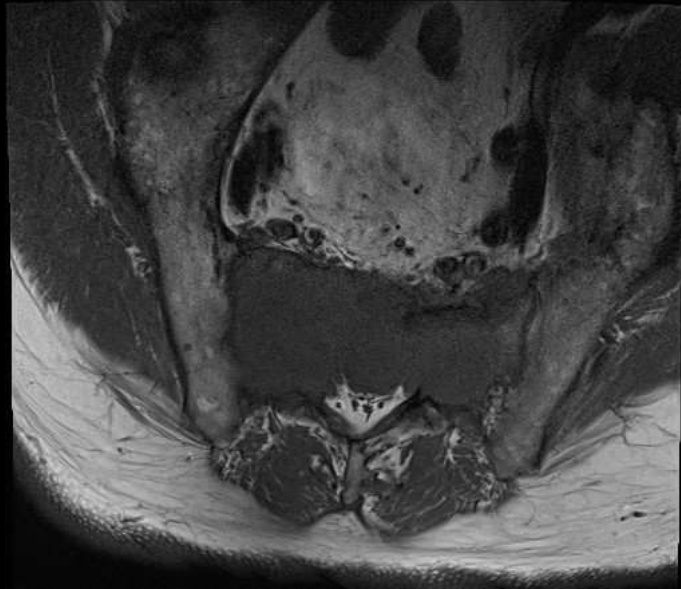
# 造影MRI



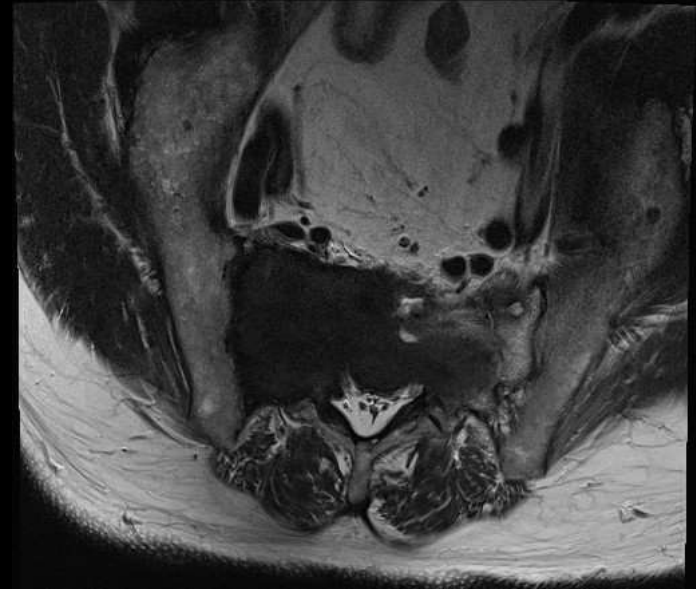
T1 Dixon in-phase 斜軸位断



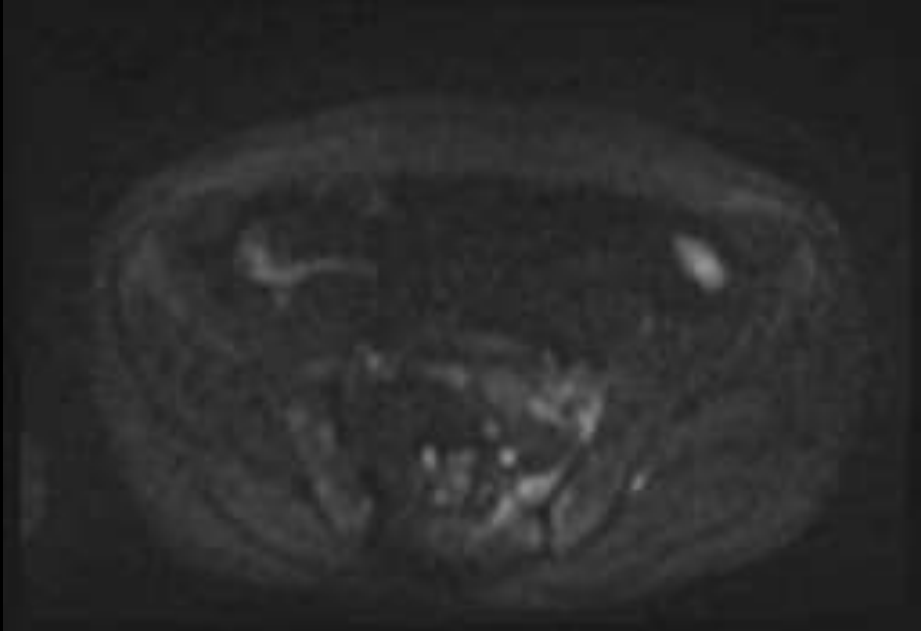
T1 Dixon out-of-phase 斜軸位断



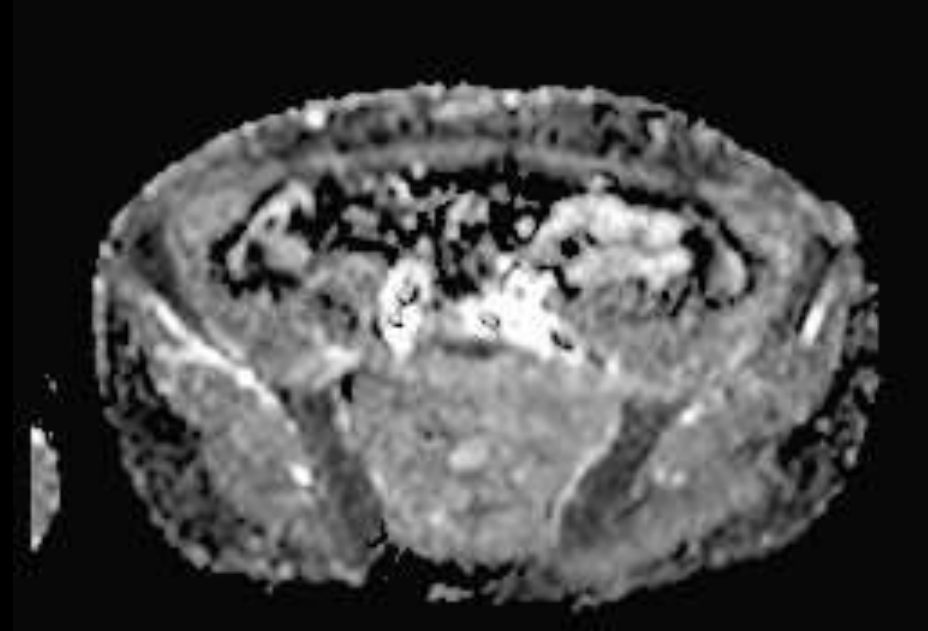
T1 Dixon in-phase 斜軸位断



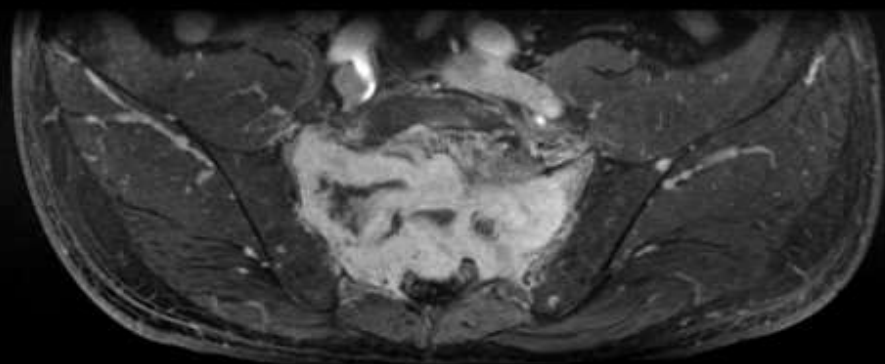
T2WI 斜軸位断



DWI b=1000



ADC map



Gd造影後  
脂肪抑制 T1WI  
軸位斷