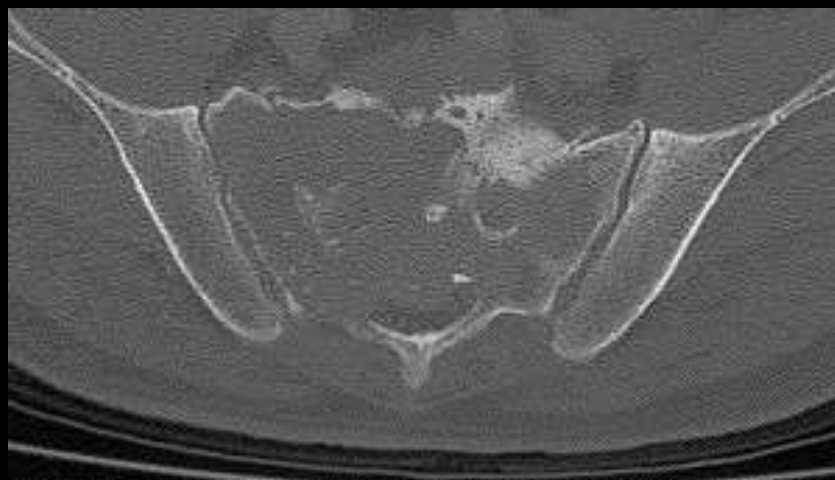




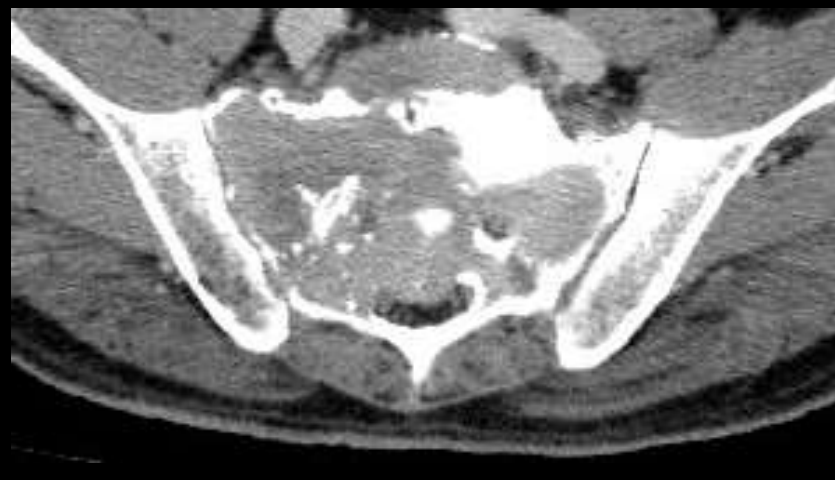
造影前



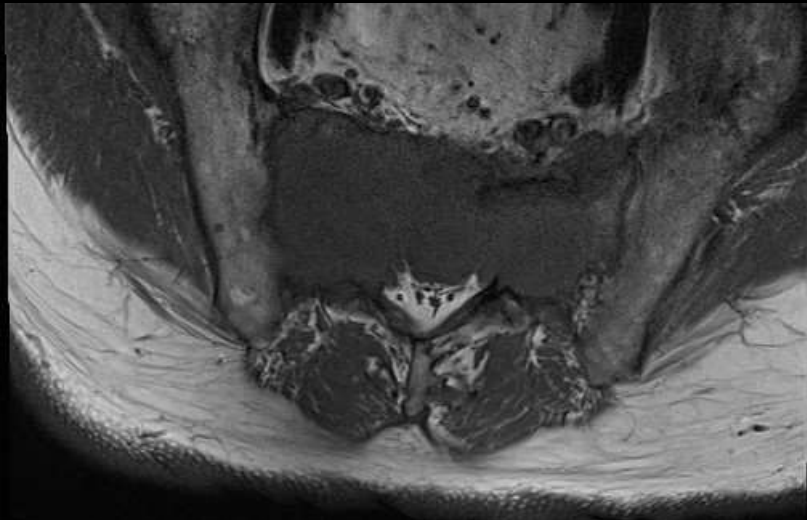
造影後 平衡相



骨条件



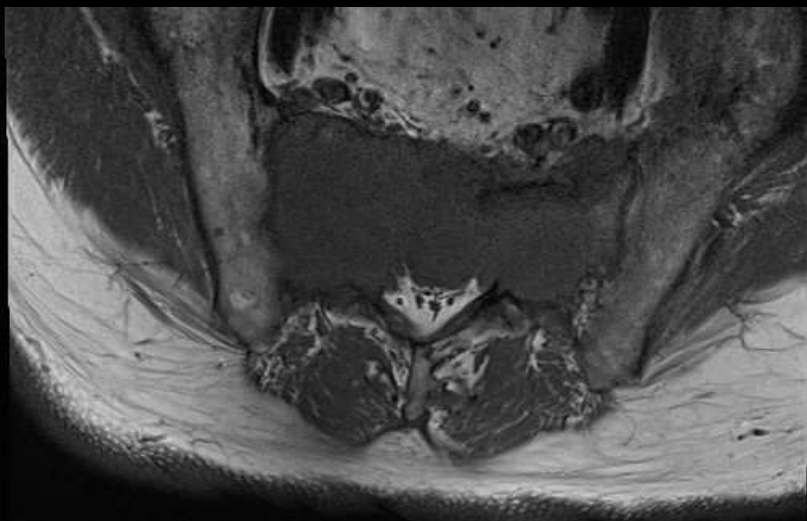
軟部条件



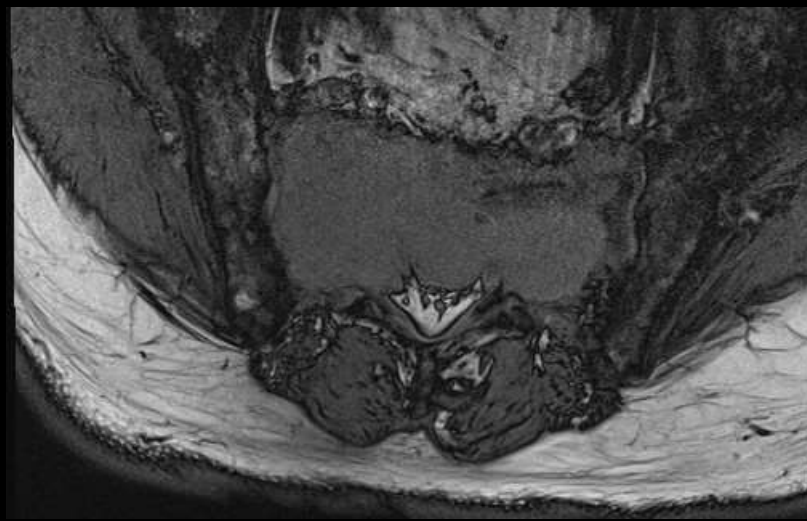
T1 Dixon in-phase  
斜軸位断



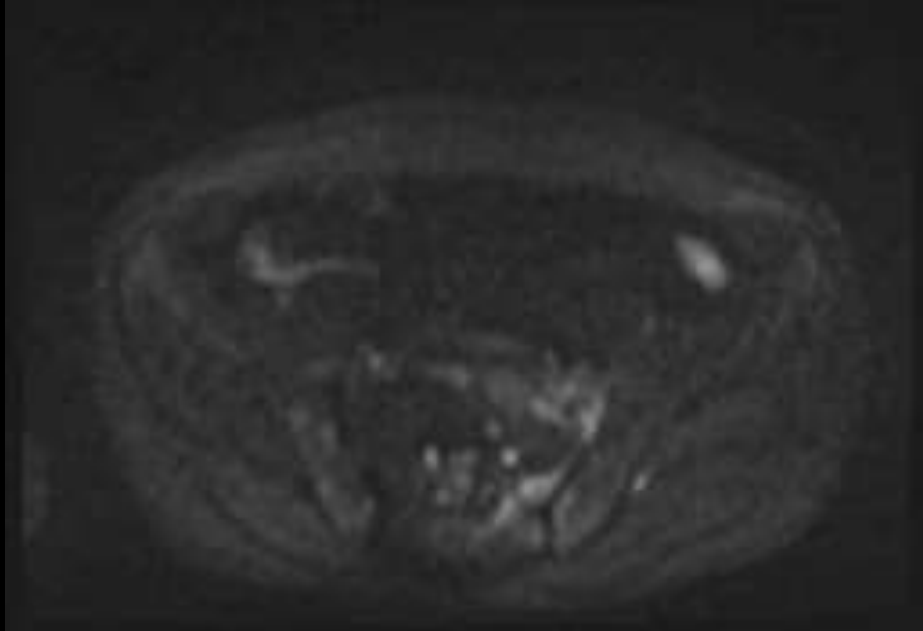
T2WI  
斜軸位断



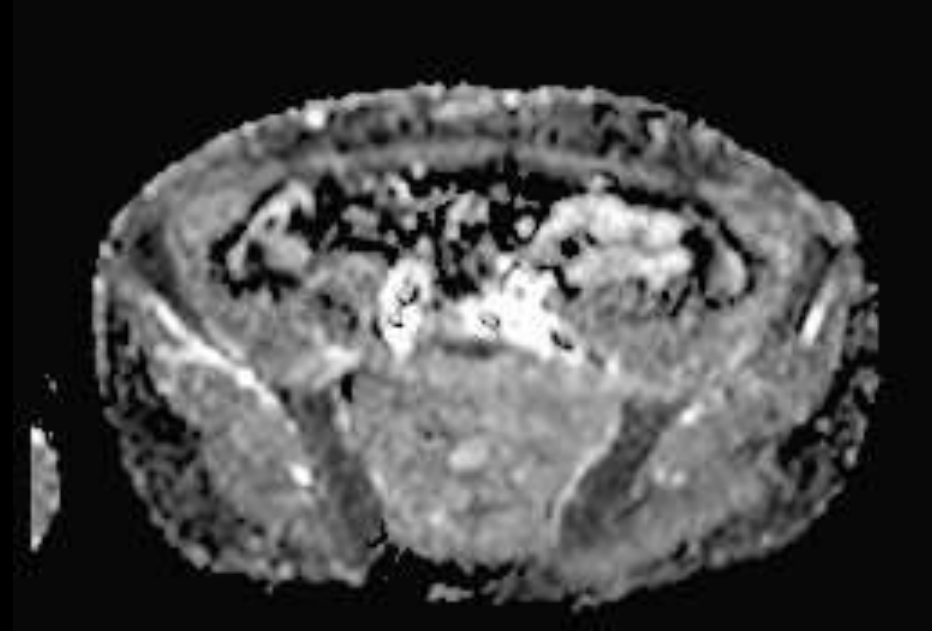
T1 Dixon in-phase  
斜軸位断



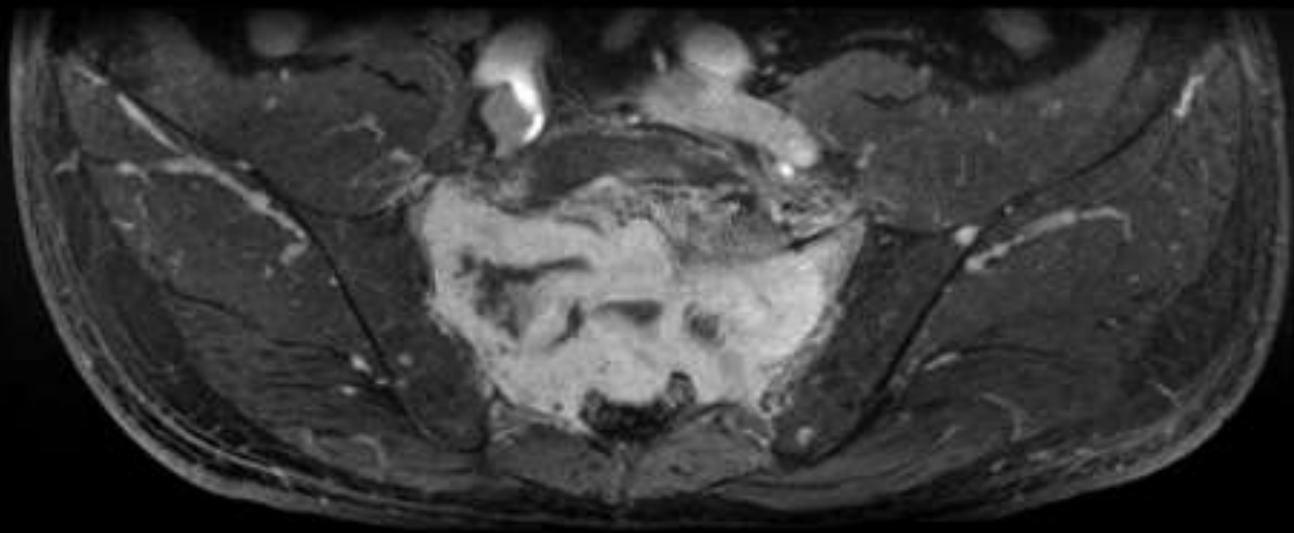
T1 Dixon out-of-phase  
斜軸位断



DWI b=1000



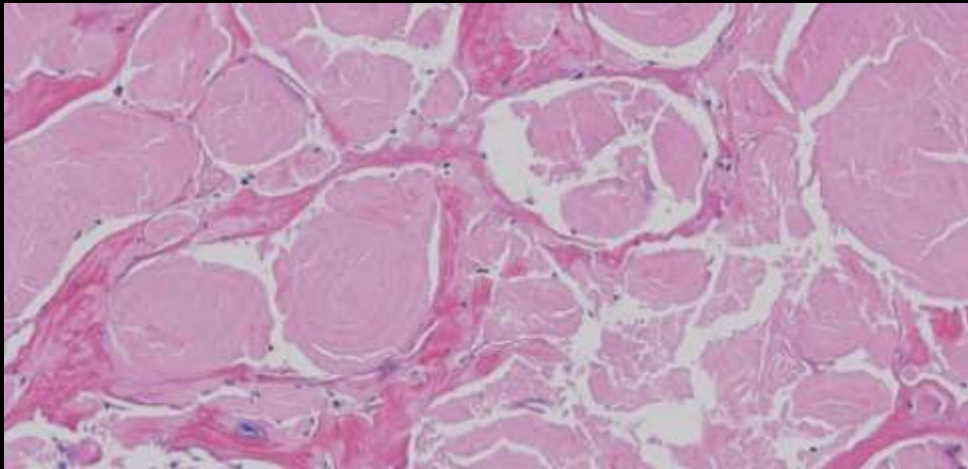
ADC map



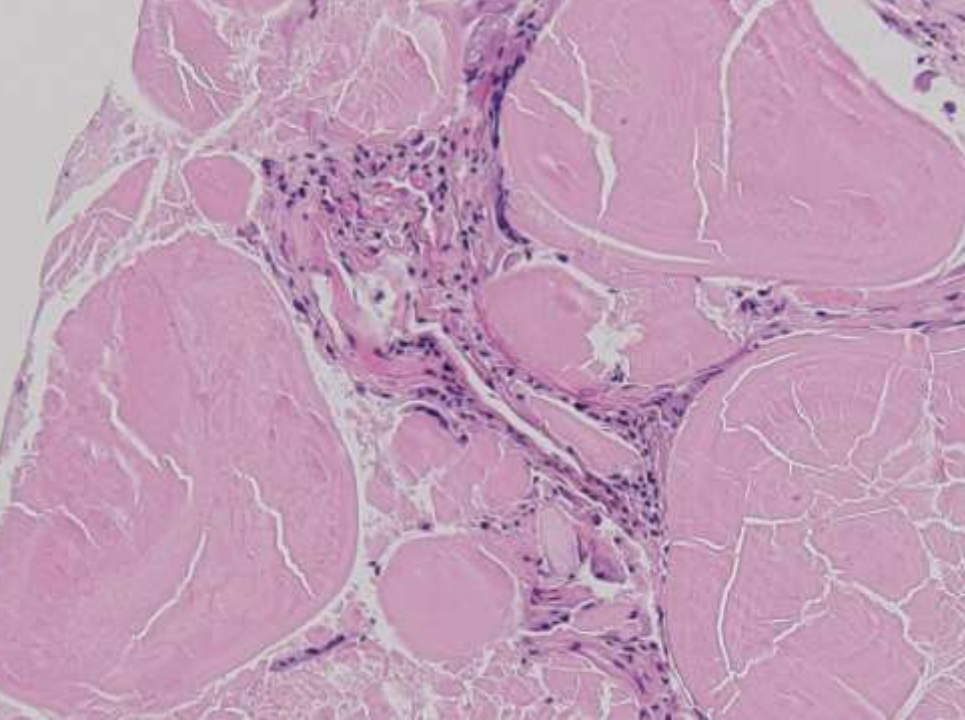
Gd造影後  
脂肪抑制 T1WI  
軸位斷



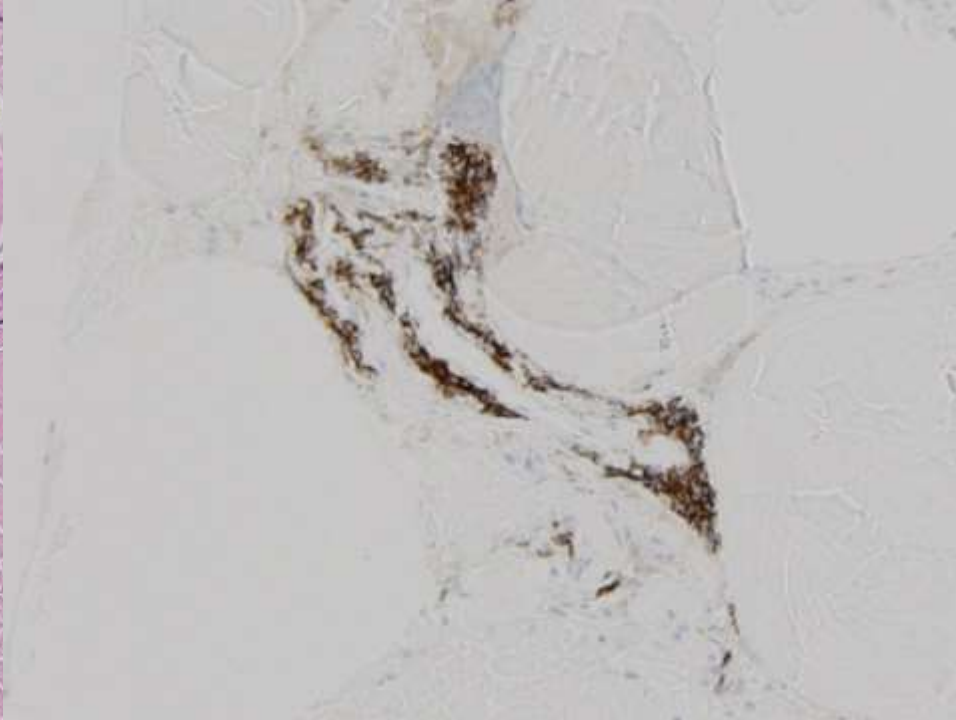
Hematoxylin-Eosin染色



Hematoxylin-Eosin染色

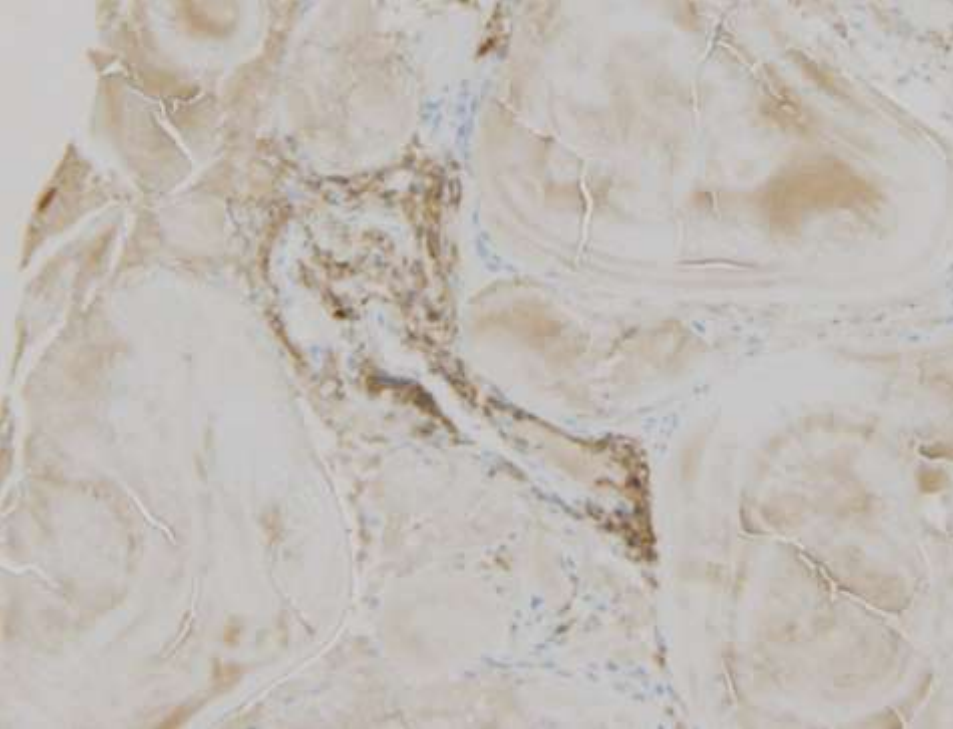


Hematoxylin-Eosin染色

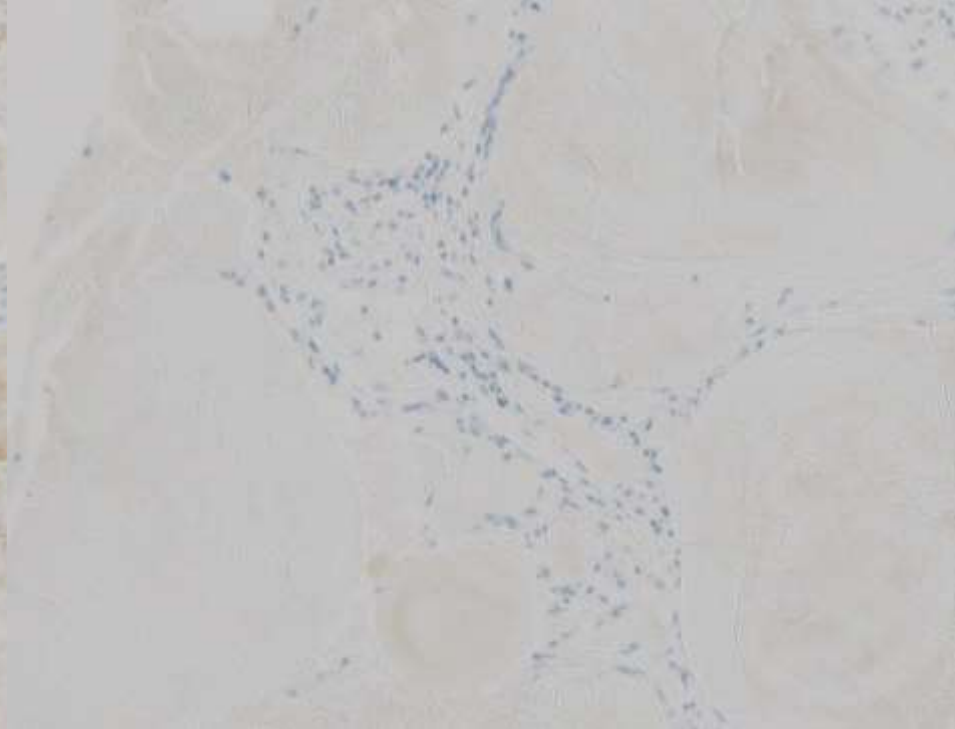


CD138



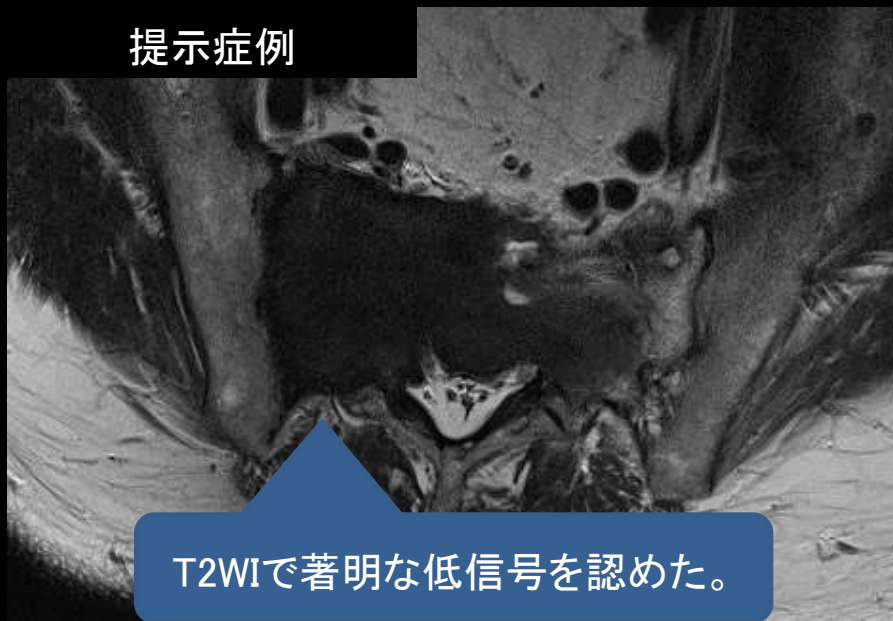


K 鎖



λ 鎖

提示症例



T2WIで著明な低信号を認めた。