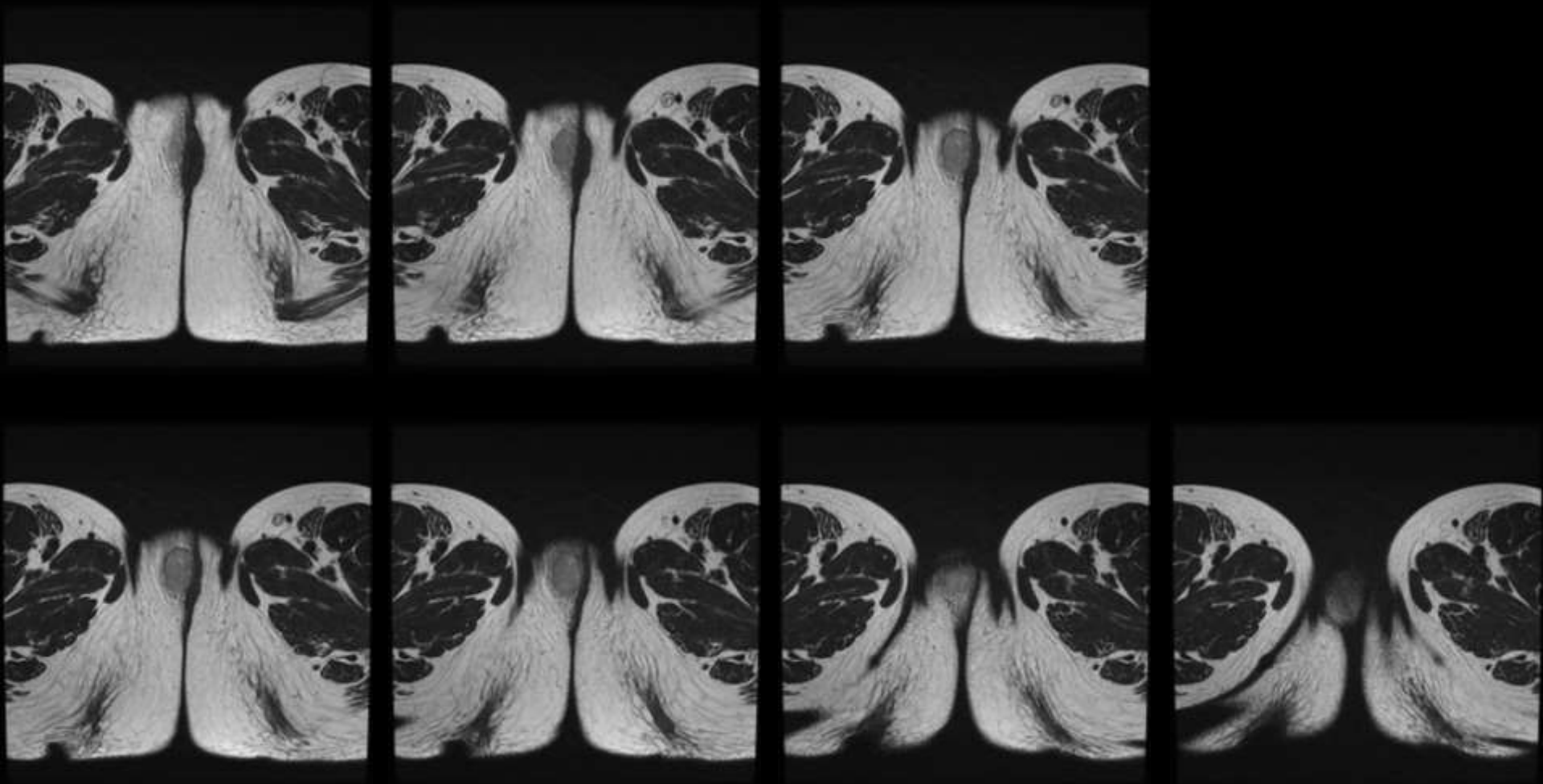


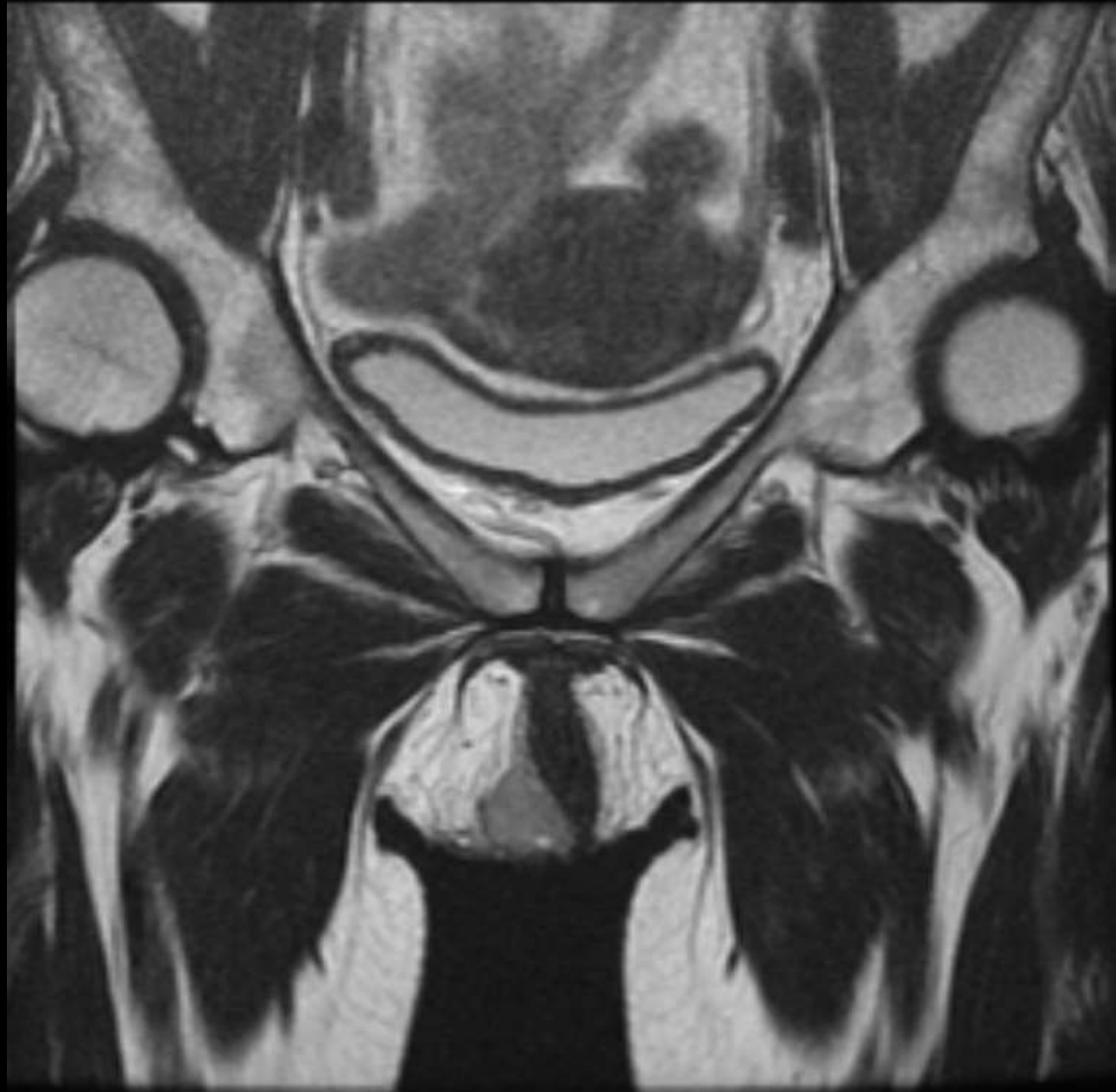
経膈超音波（前医施行）



MRI:T2強調横断像(Ax T2WI)

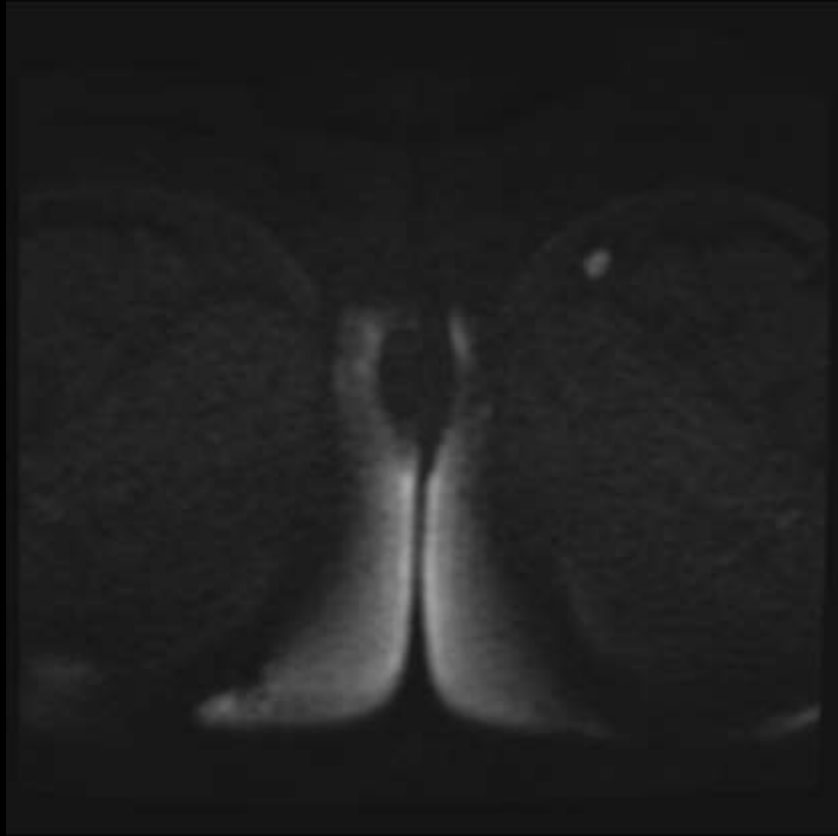


- T2強調冠状断像
(Cor T2WI)

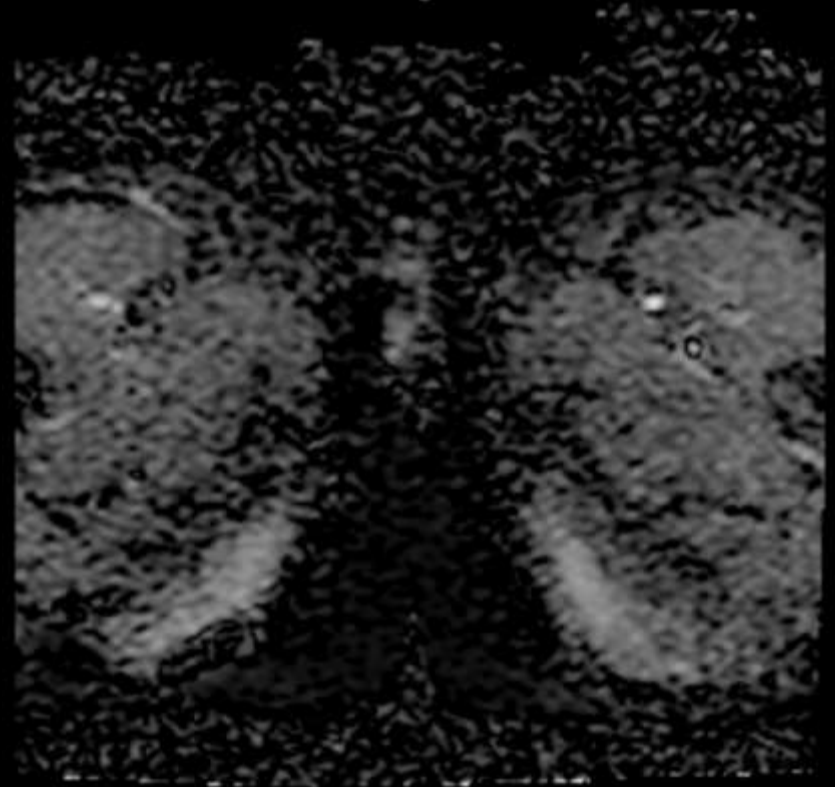


MRI

- 拡散強調像 (b=1000)
(DWI)



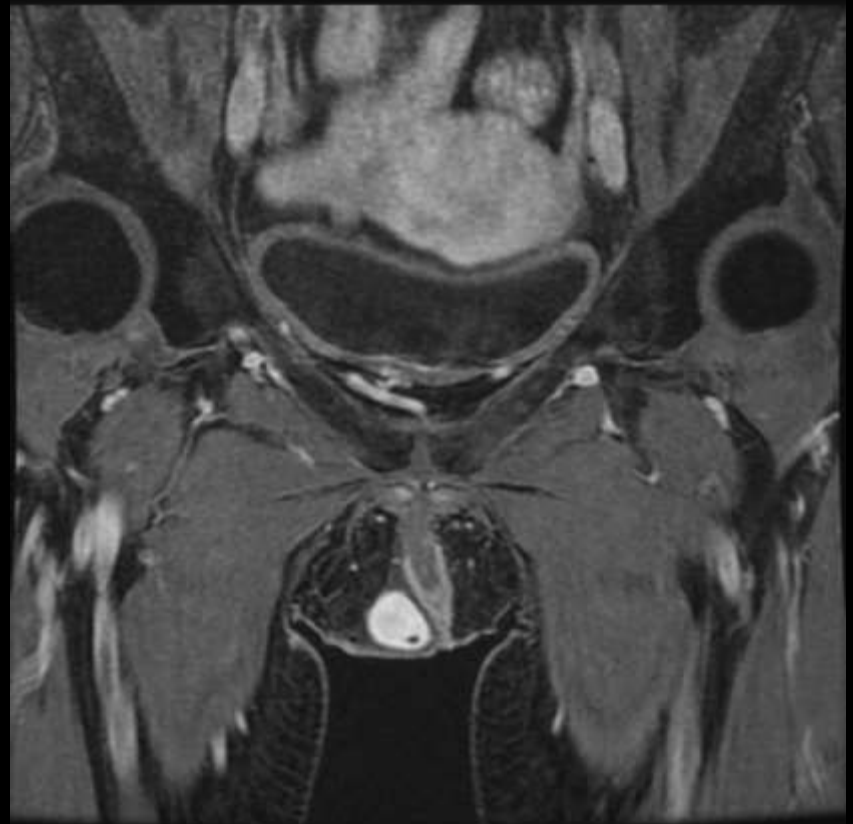
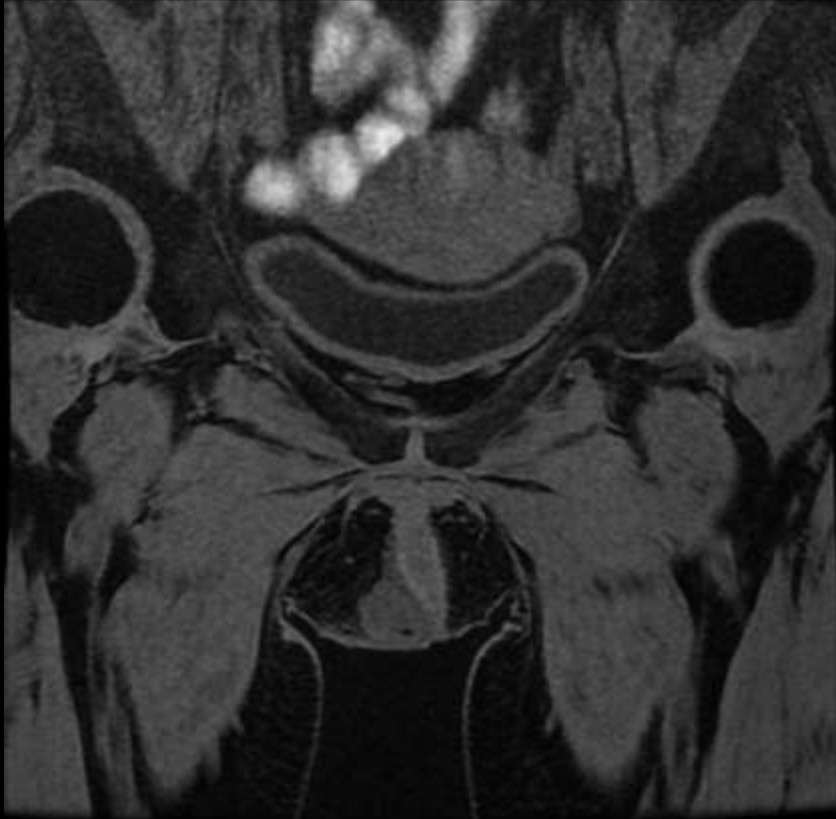
- ADC計算画像
(ADC map)

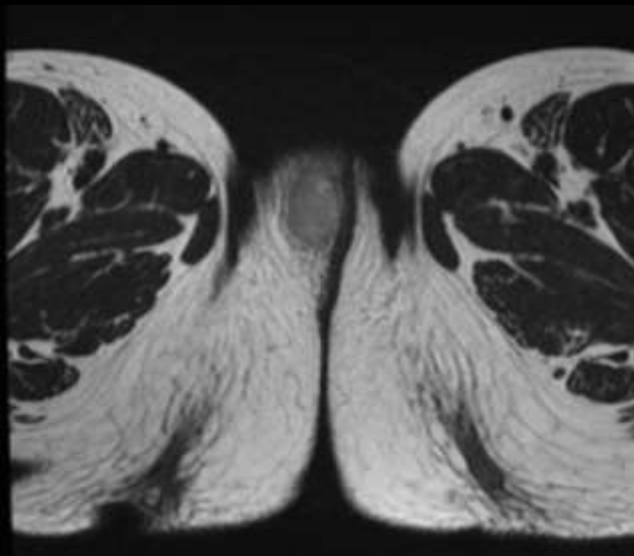


MRI

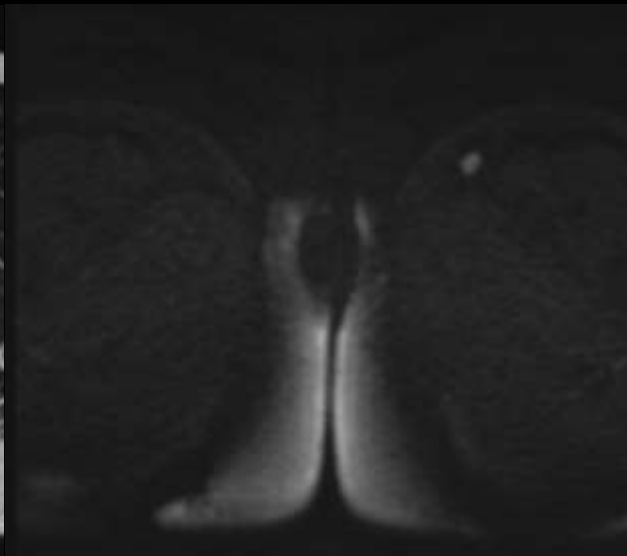
- 脂肪抑制T1強調冠状断像
(Cor fsT1WI, DIXON)

- 造影脂肪抑制T1強調冠状断像
(Cor CE-fsT1WI, DIXON)

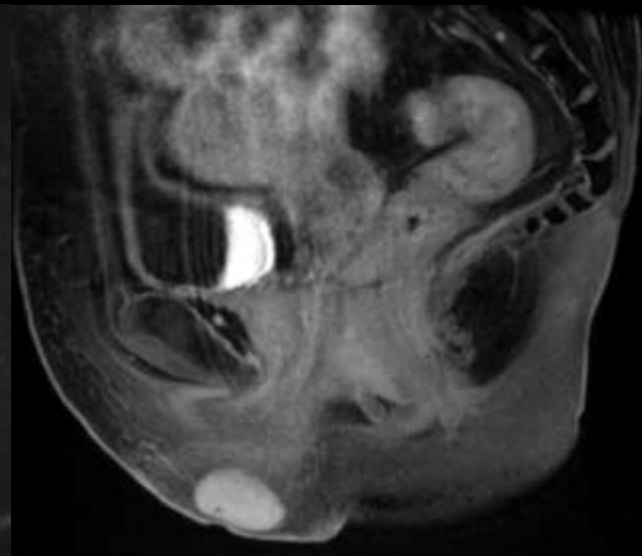




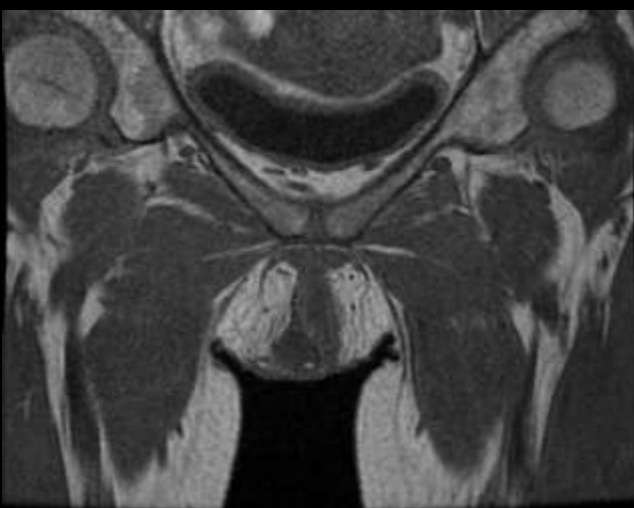
Ax T2WI



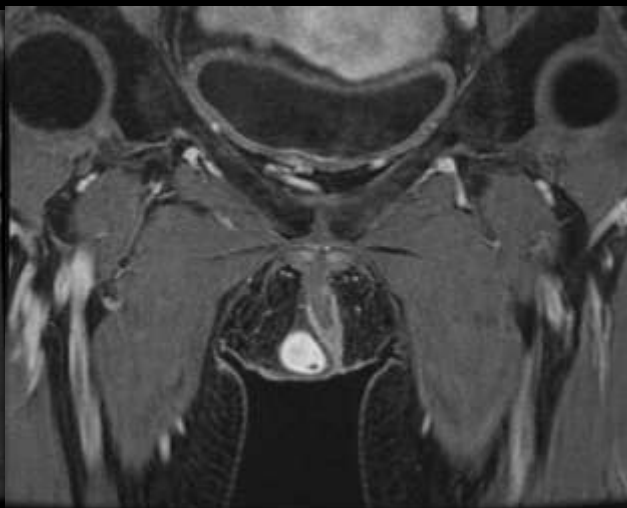
Ax DWI



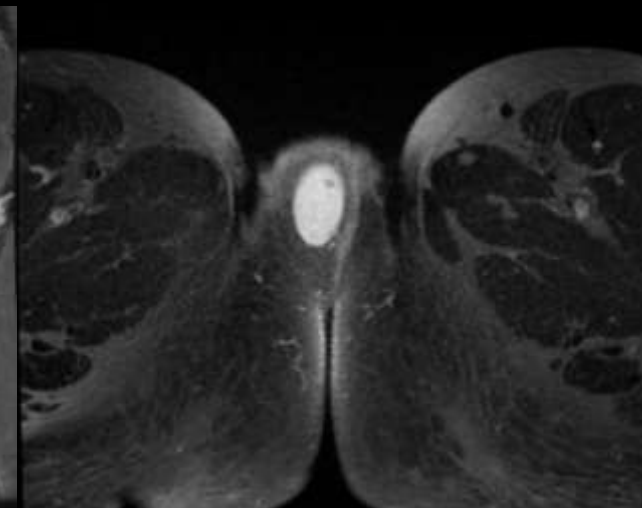
Sag CE-fsT1WI



Cor T1WI



Cor CE-fsT1WI



Ax CE-fsT1WI