

発症の5日前CXR
(Follow-up)

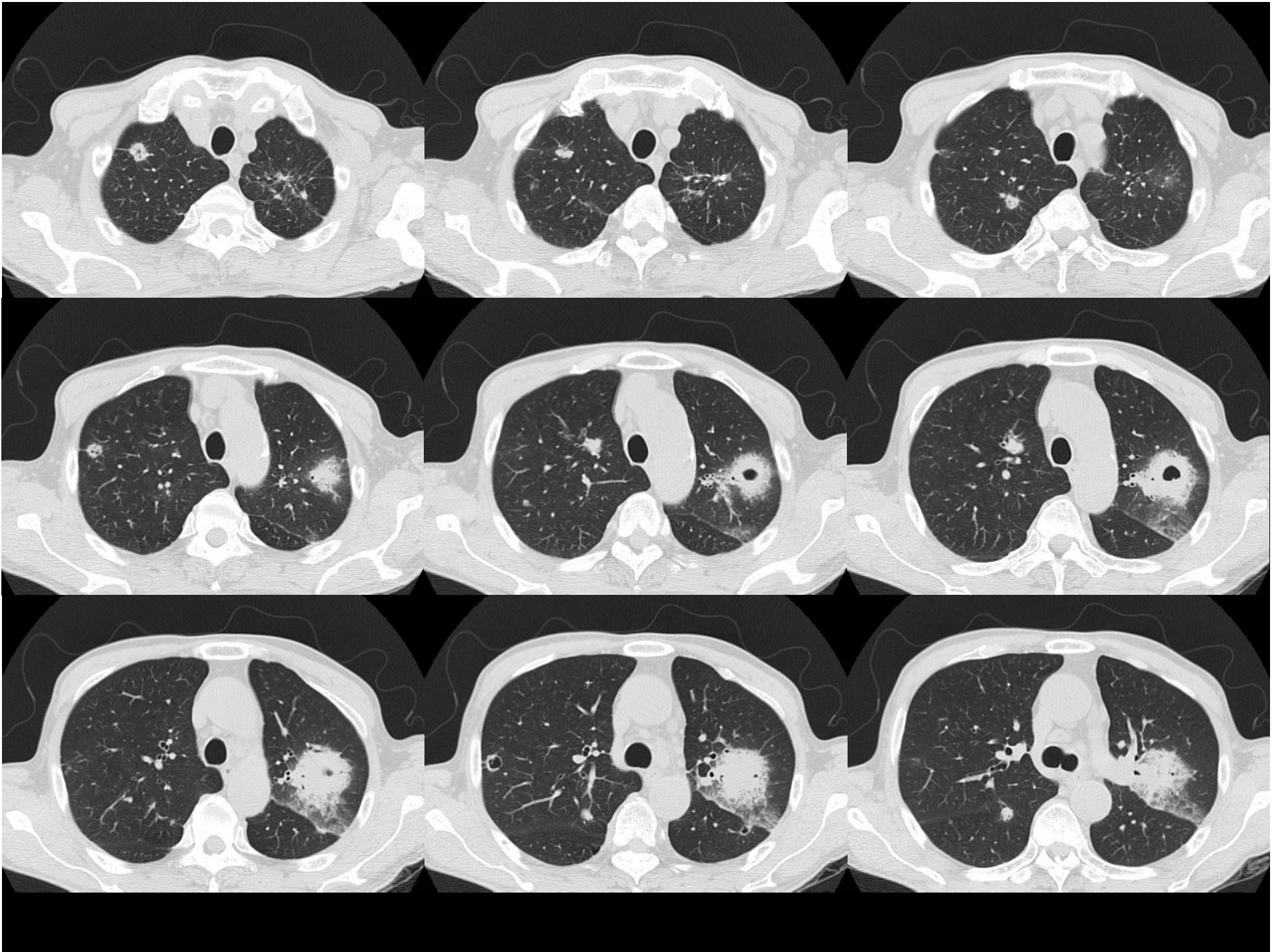


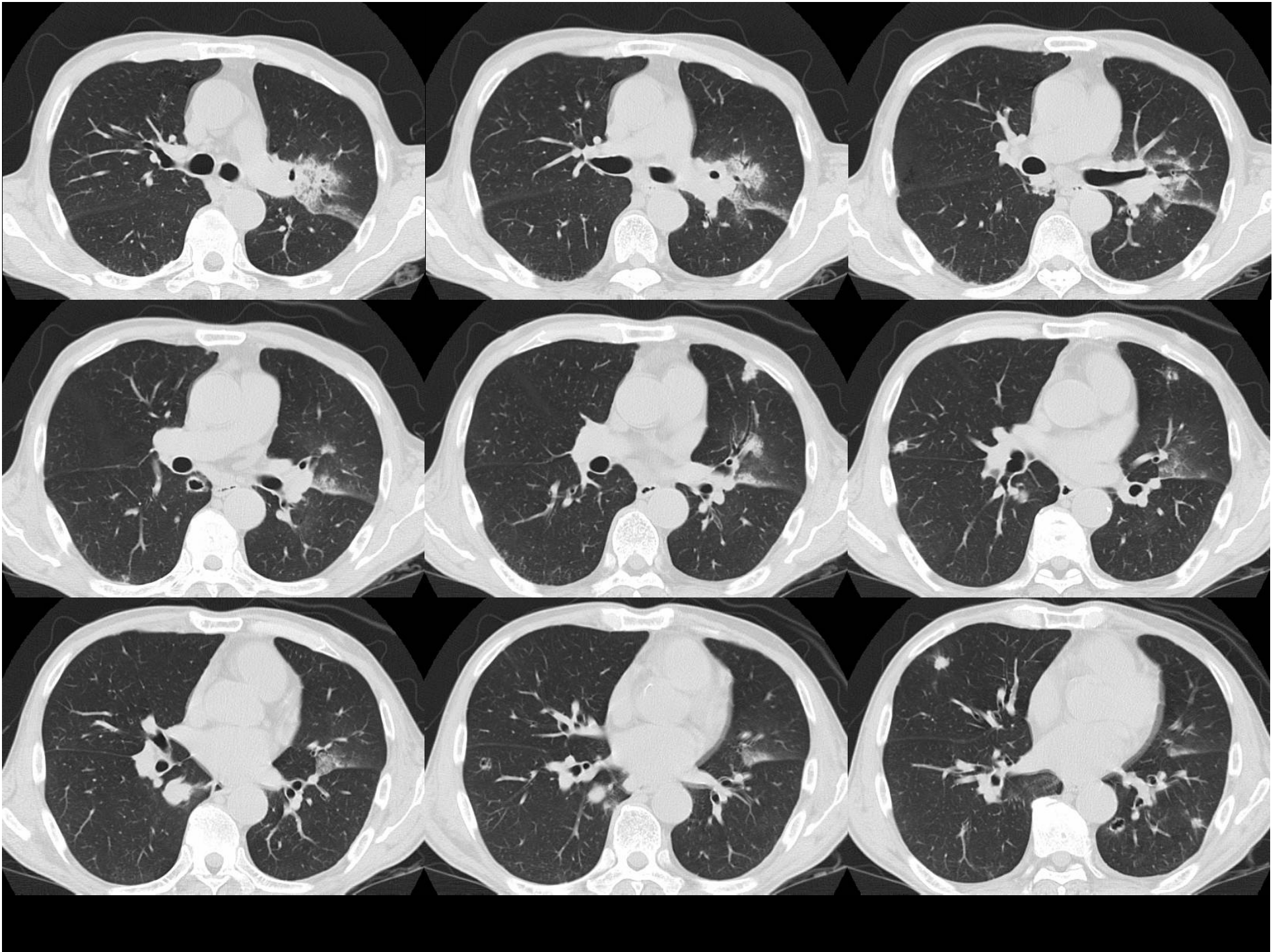
CXR PA像
(CTの6日後)

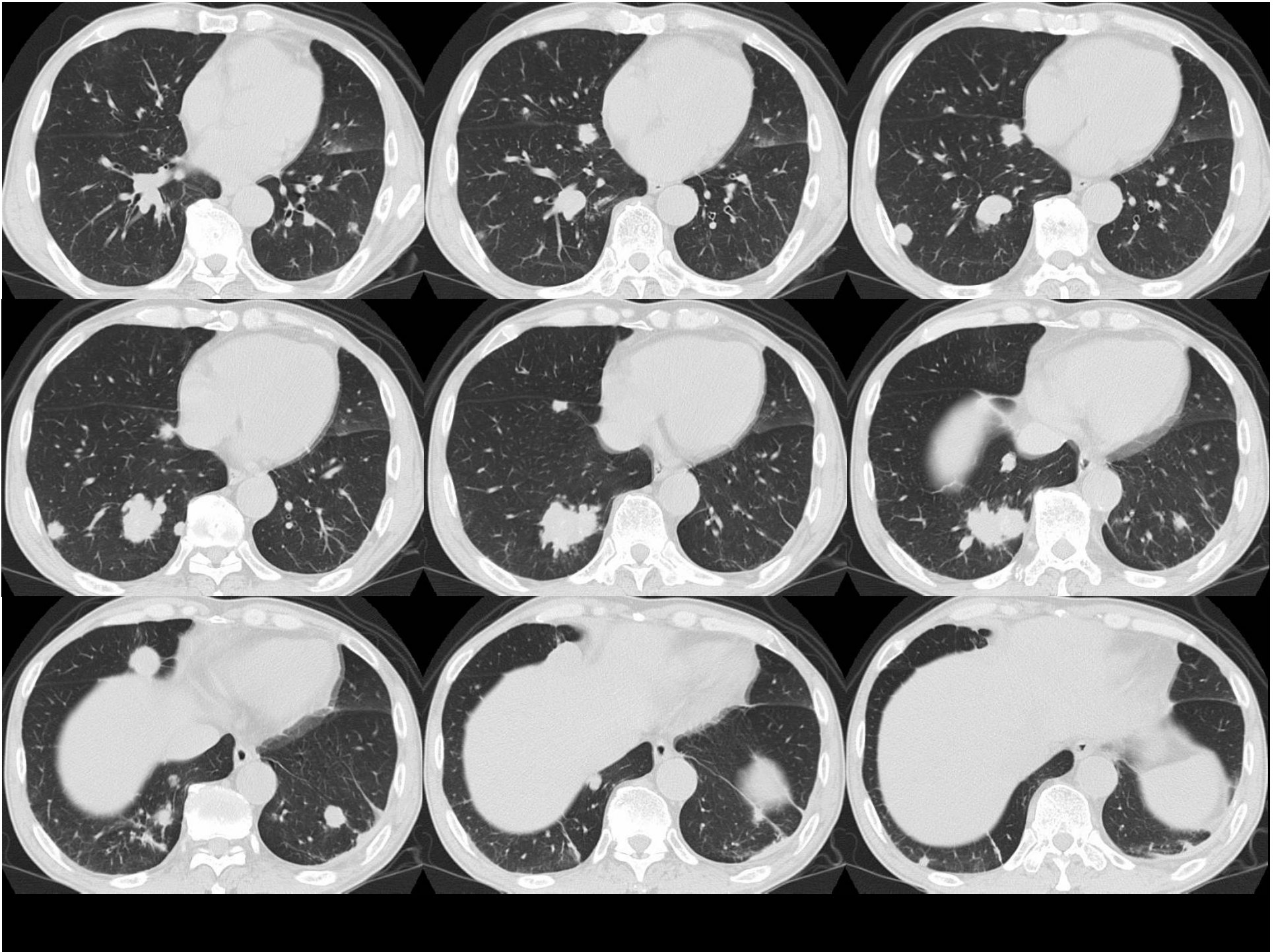


救急受診時胸腹部CT(肺野条件 2.5mm厚/1cm間隔)

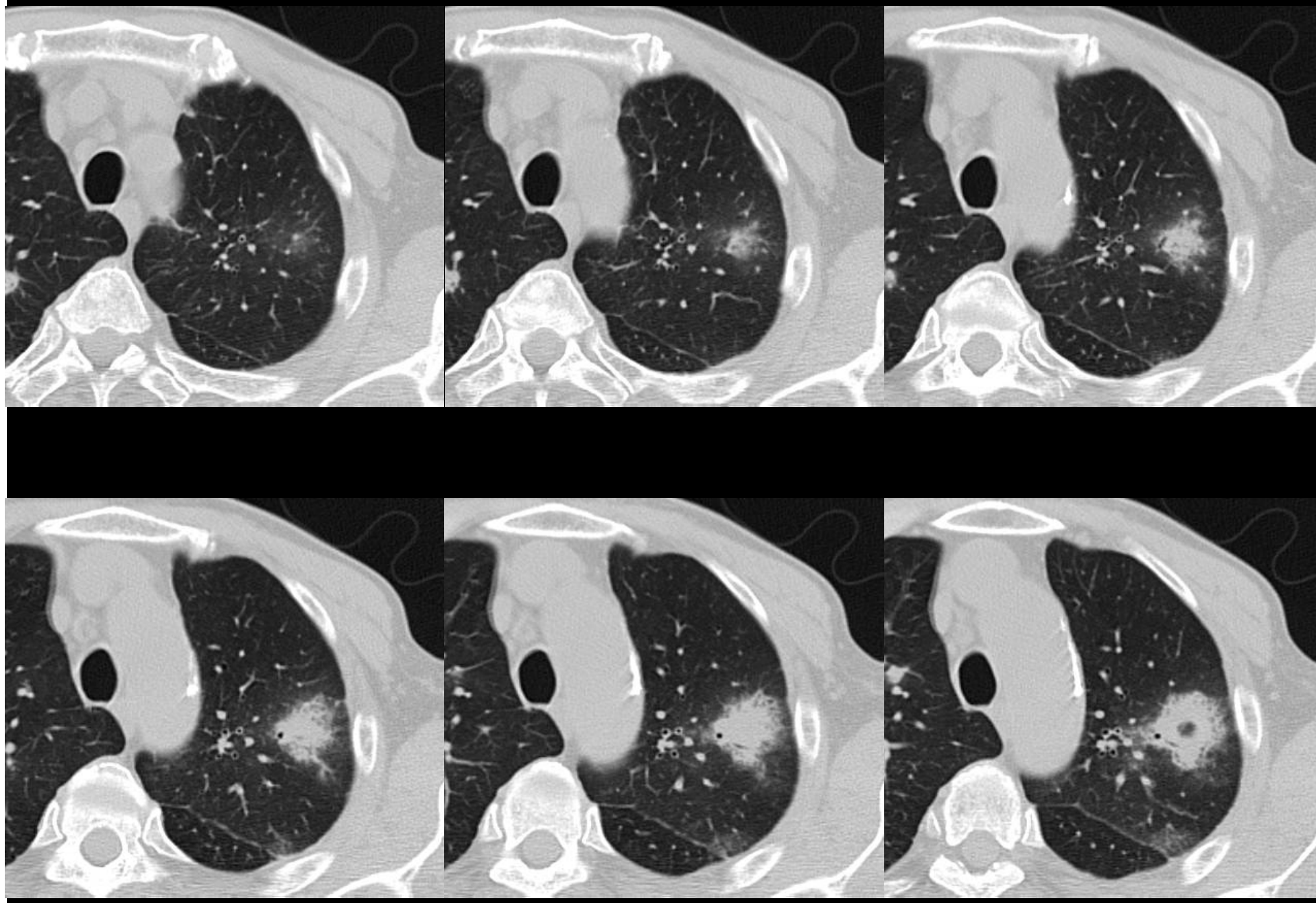


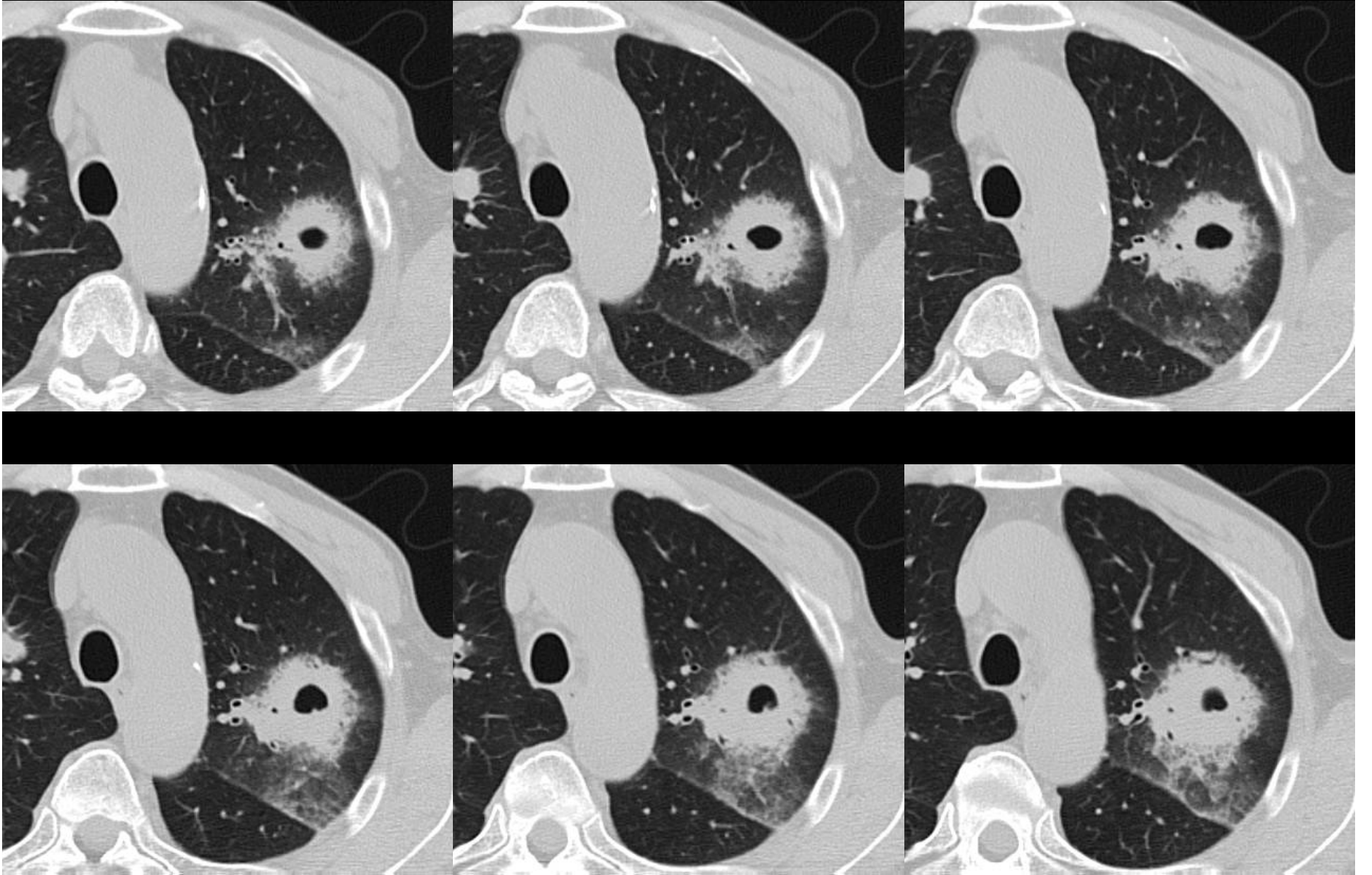


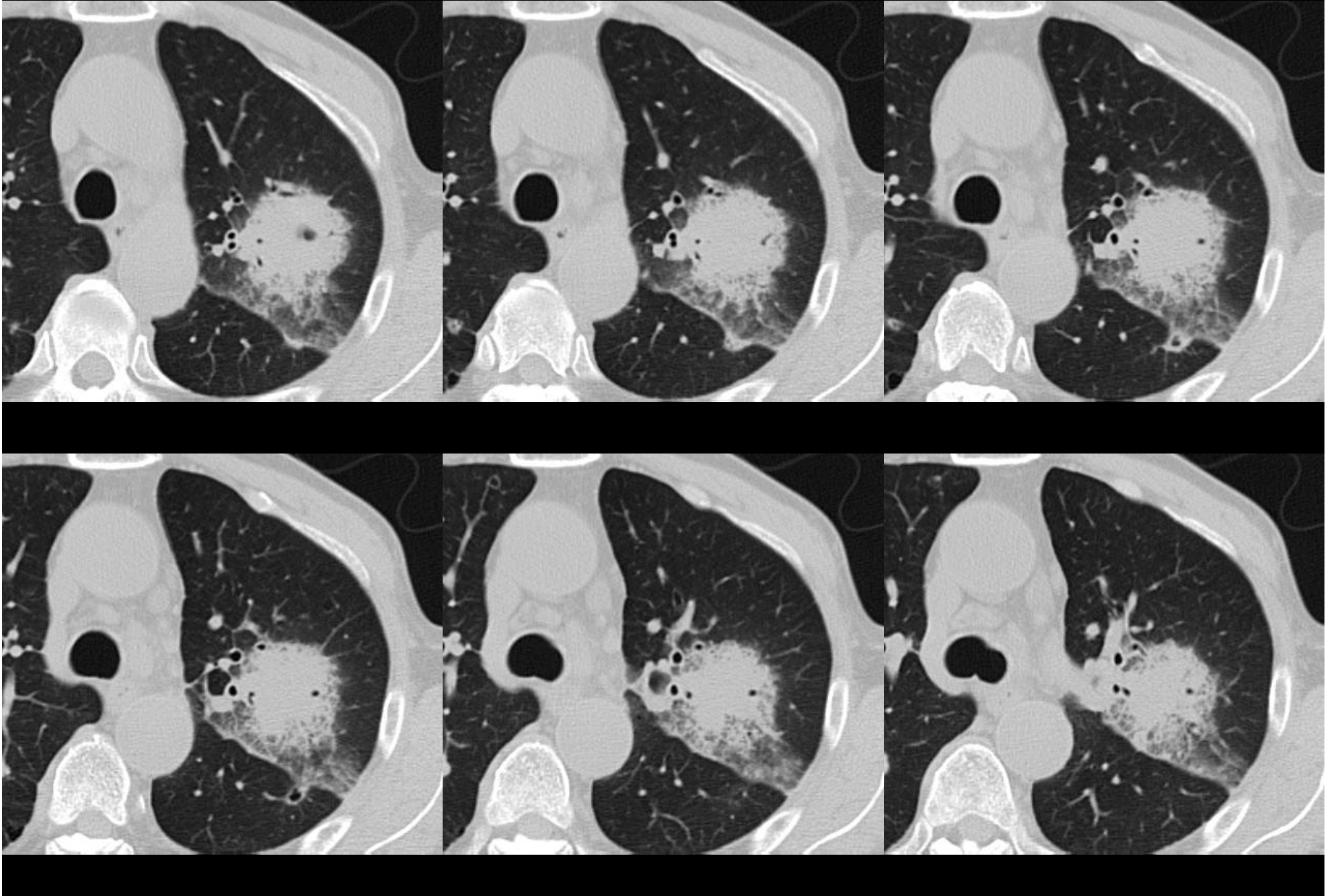


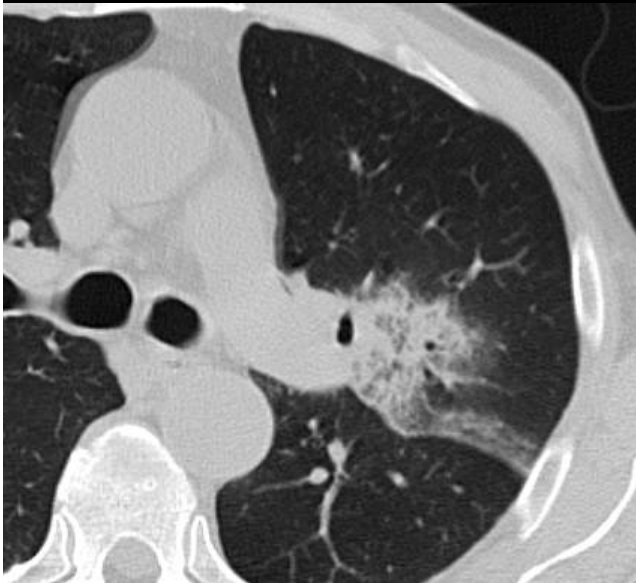
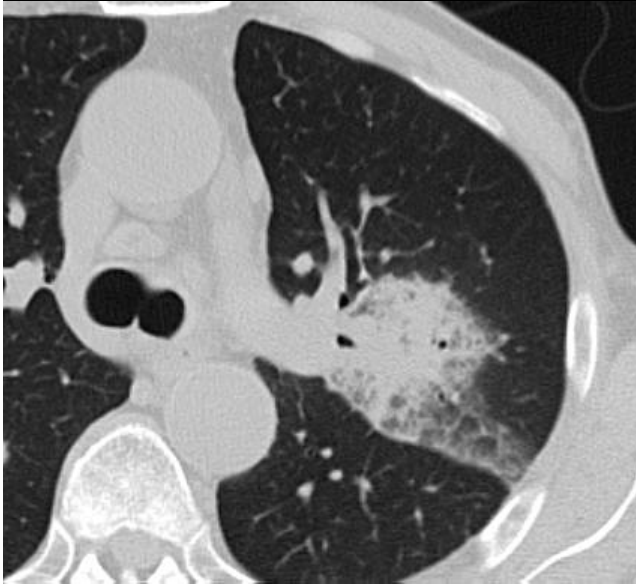


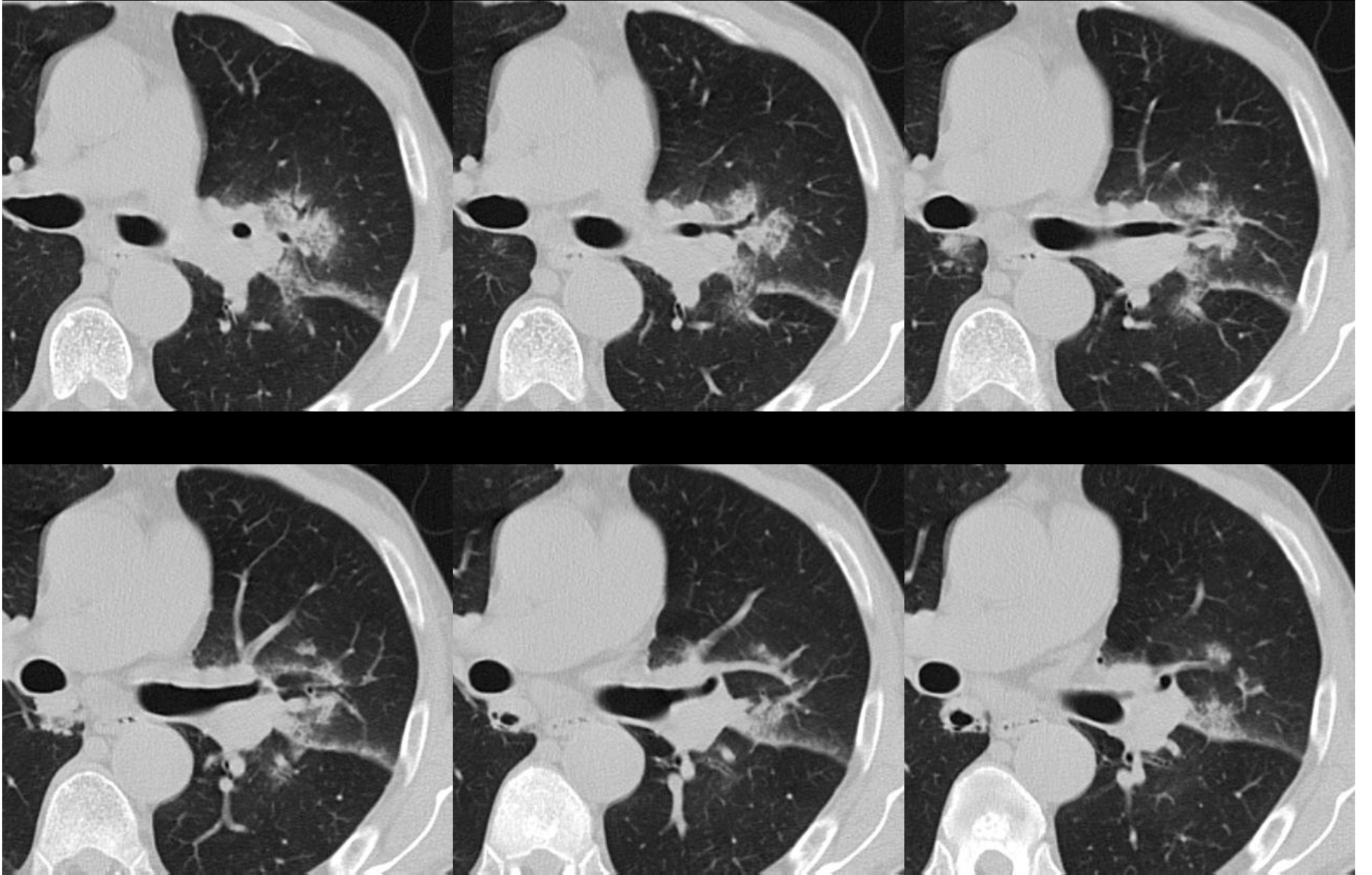
救急受診時胸腹部CT(肺野条件 2.5mm厚/2.5mm間隔連続)

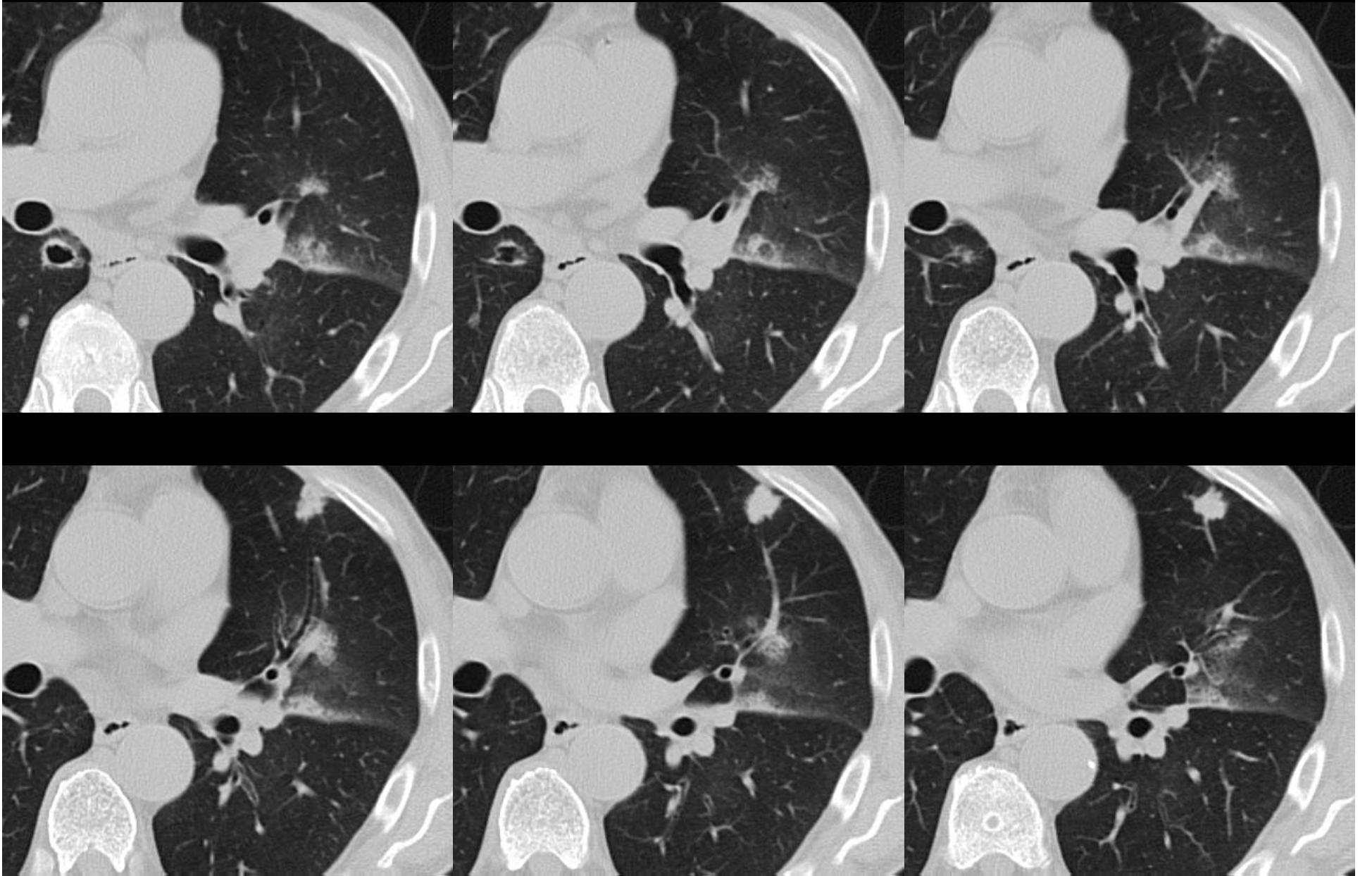


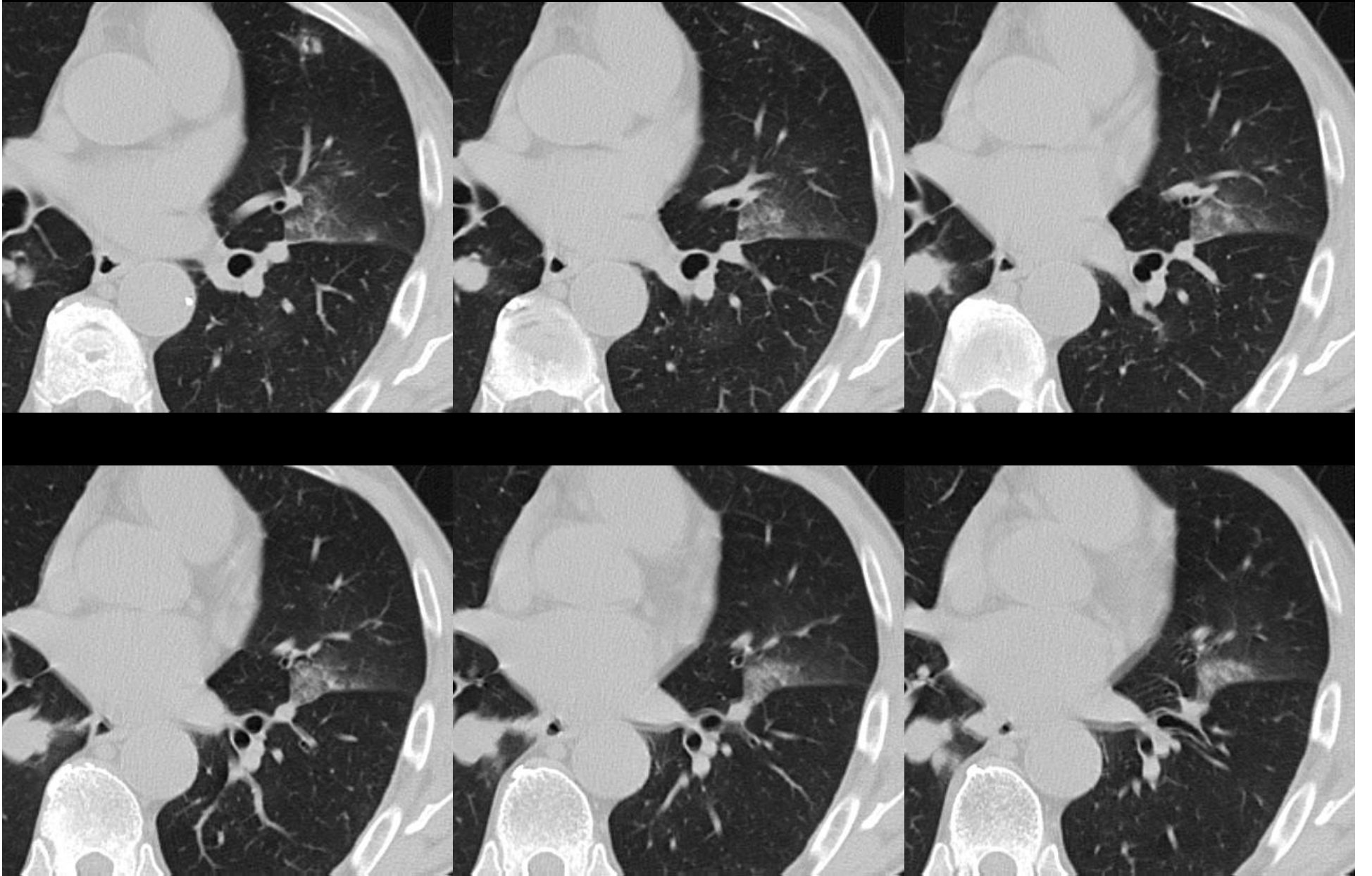












救急受診時胸腹部CT(造影2ml/sec 70秒後 軟部条件 5mm厚)

