



V  
TR=5500  
TE=200  
1.0.7x0.78mm  
5mm  
2mm



V  
TR=5500  
TE=200  
1.0.7x0.78mm  
5mm  
2mm  
WL:

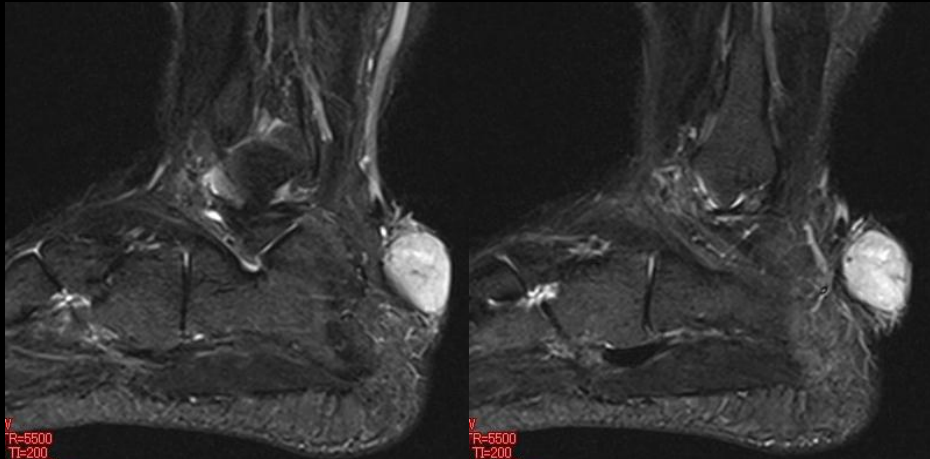


V  
TR=5500  
TE=200  
1.0.7x0.78mm  
5mm  
2mm  
WL:



V  
TR=5500  
TE=200  
1.0.7x0.78mm  
5mm  
2mm  
WL:

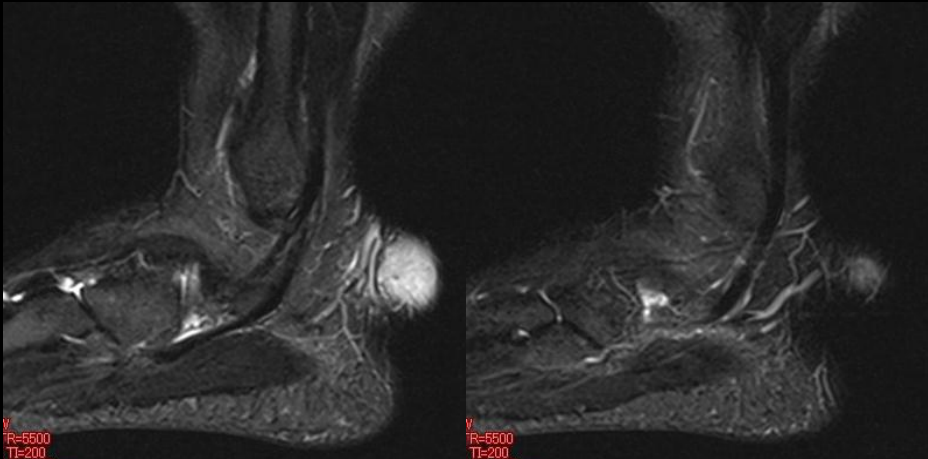
1



V  
R=5500  
TE=200  
1.07x0.78mm  
5mm  
2mm

V  
R=5500  
TE=200  
1.07x0.78mm  
5mm  
2mm

WL:

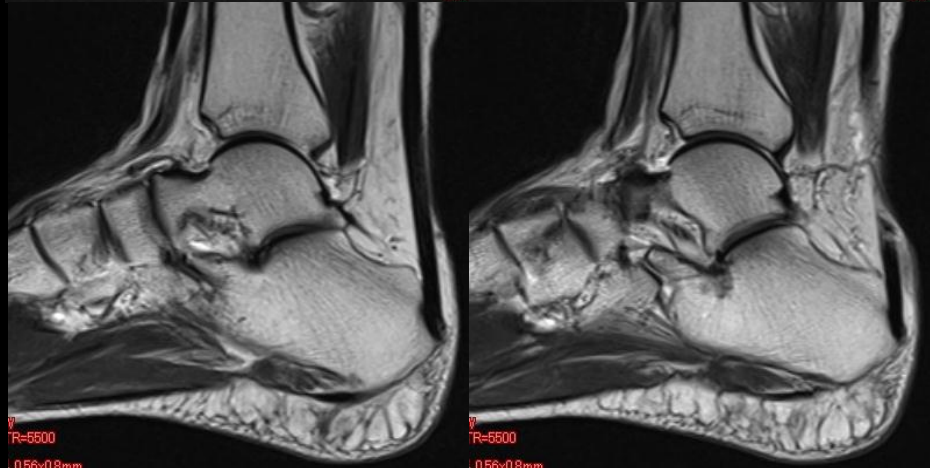


V  
R=5500  
TE=200  
1.07x0.78mm  
5mm  
12mm

V  
R=5500  
TE=200  
1.07x0.78mm  
5mm  
2mm

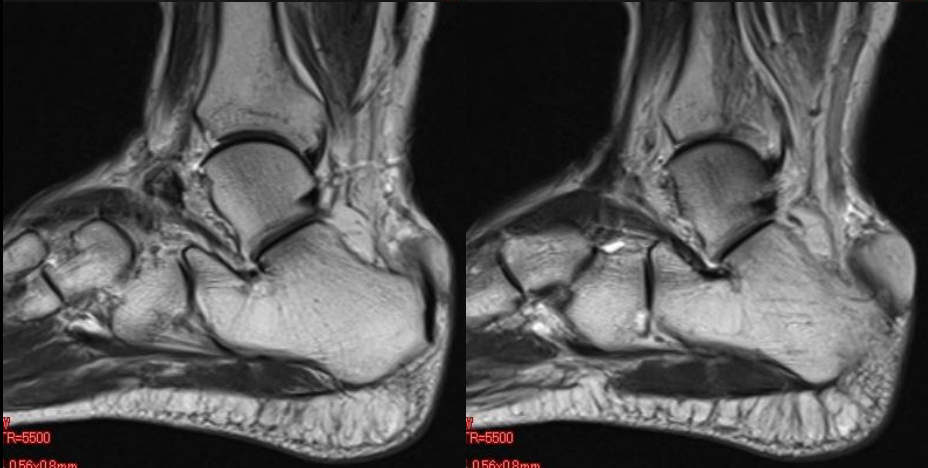
WL:

WL:



V  
R=5500  
.056x0.8mm

V  
R=5500  
.056x0.8mm



V  
R=5500  
.056x0.8mm

V  
R=5500  
.056x0.8mm





