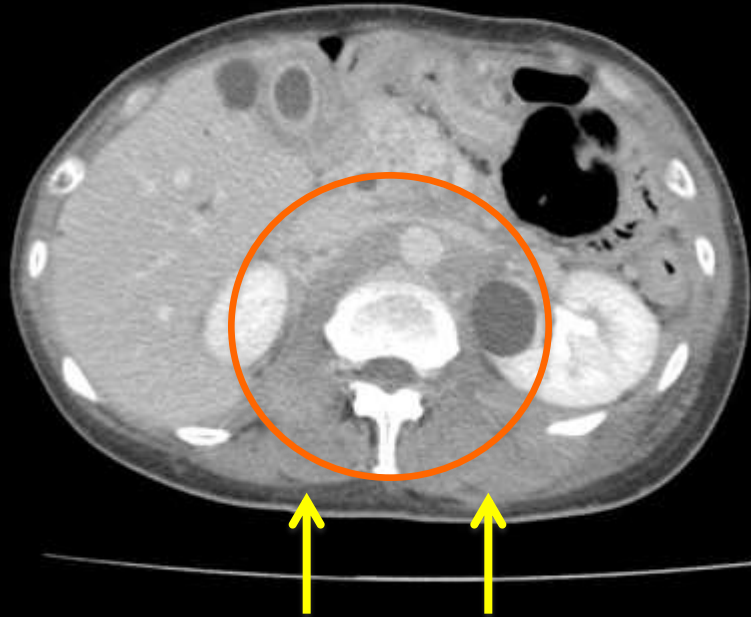


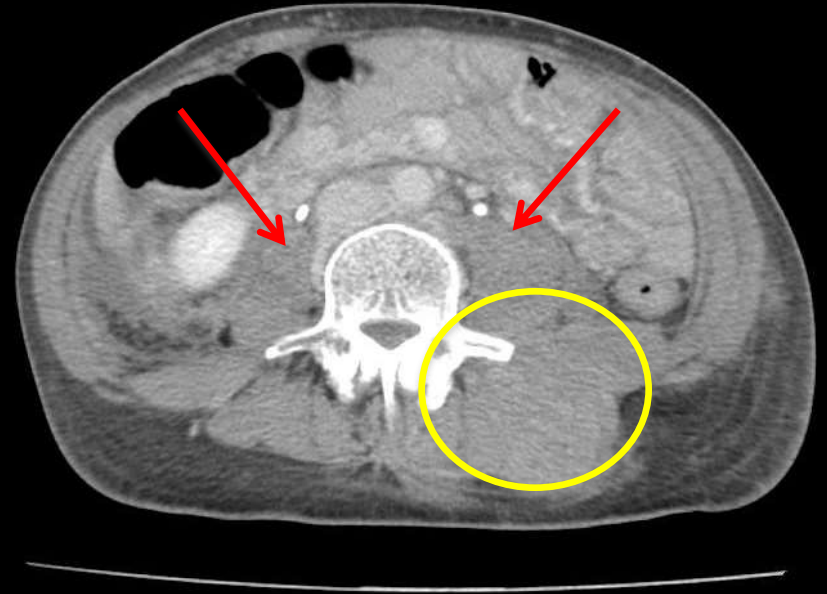
# 腹部造影CT (Venography直後)

大動脈周囲を中心とした軟部影の増大

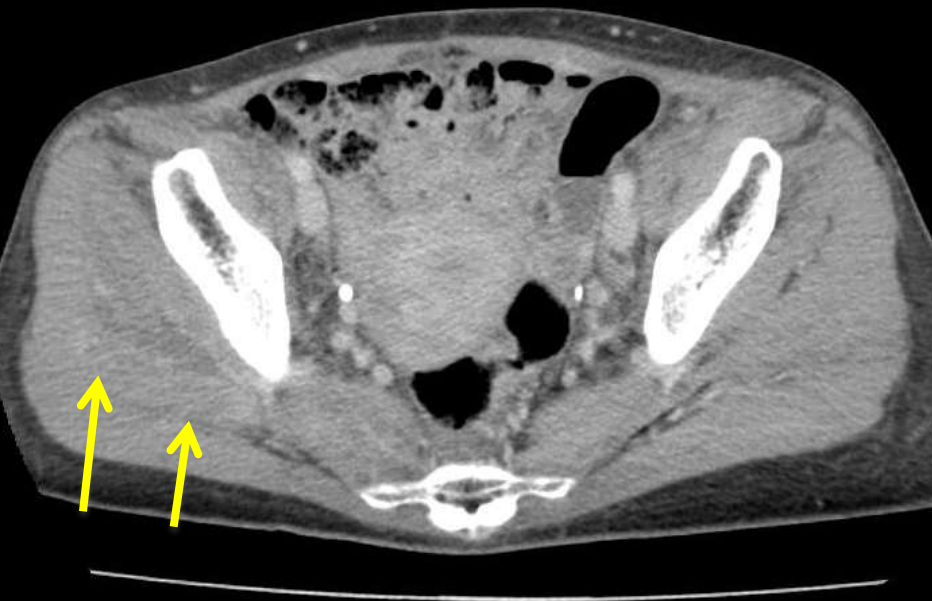


脊椎起立筋群の腫脹

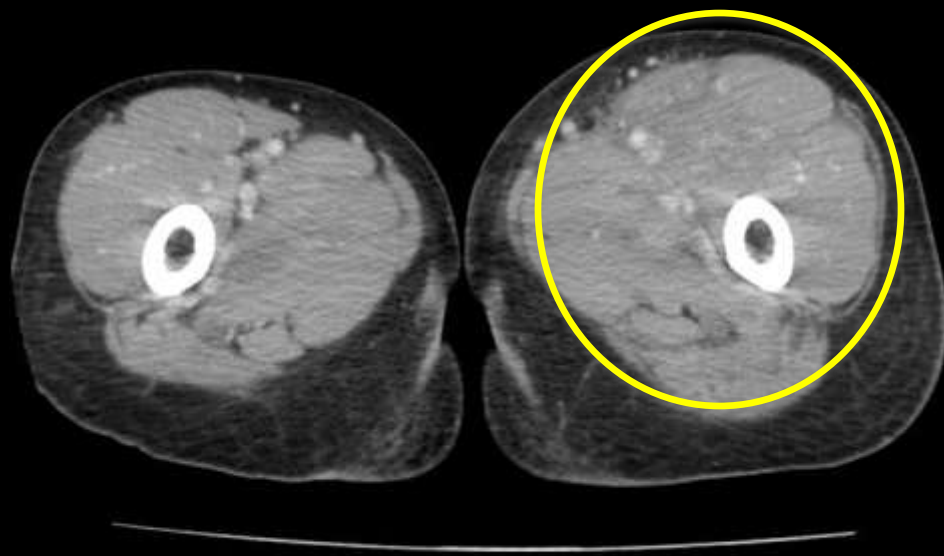
腸腰筋の腫大



右殿筋群の腫脹

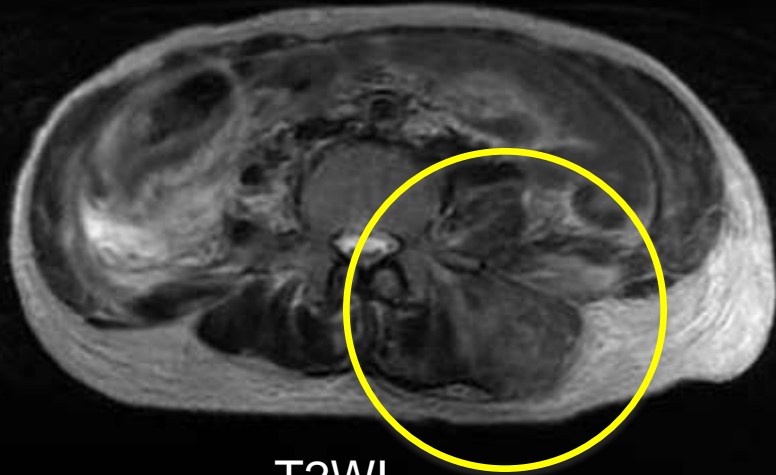


左大腿筋群の高度腫脹

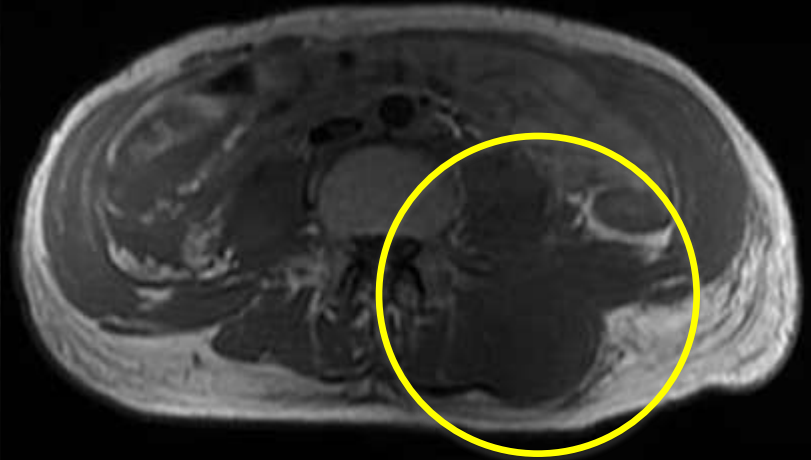


# 造影MRI (CTNB施行後)

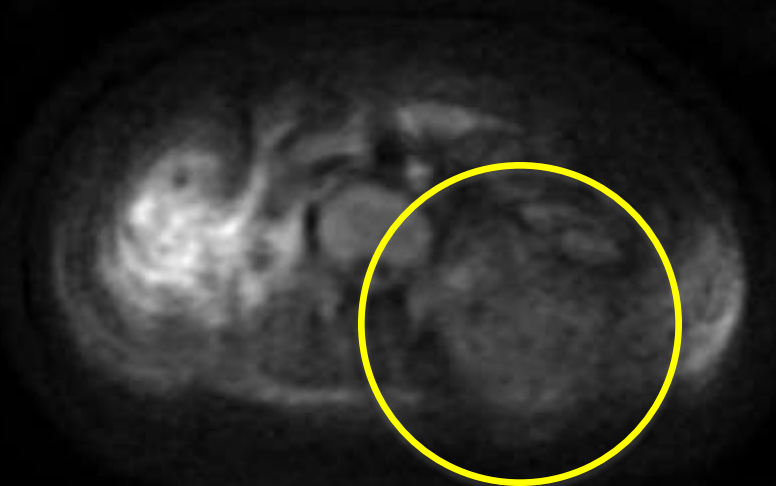
左腰腸肋筋、腰方形筋、大腰筋の腫脹



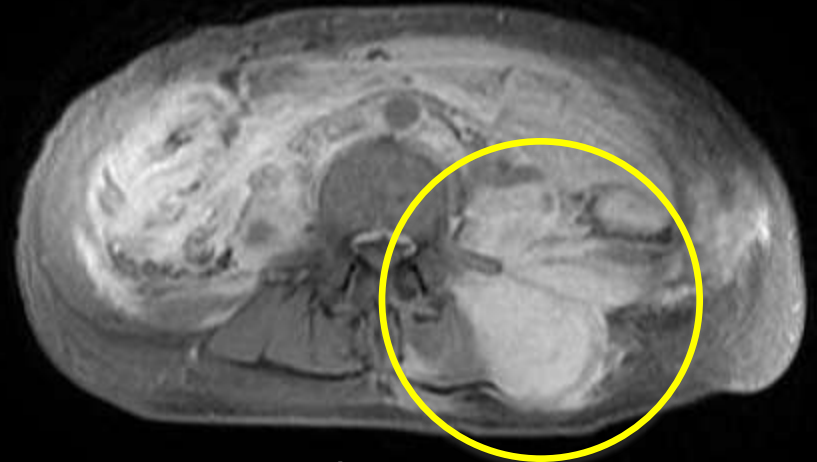
T2WI



T1WI

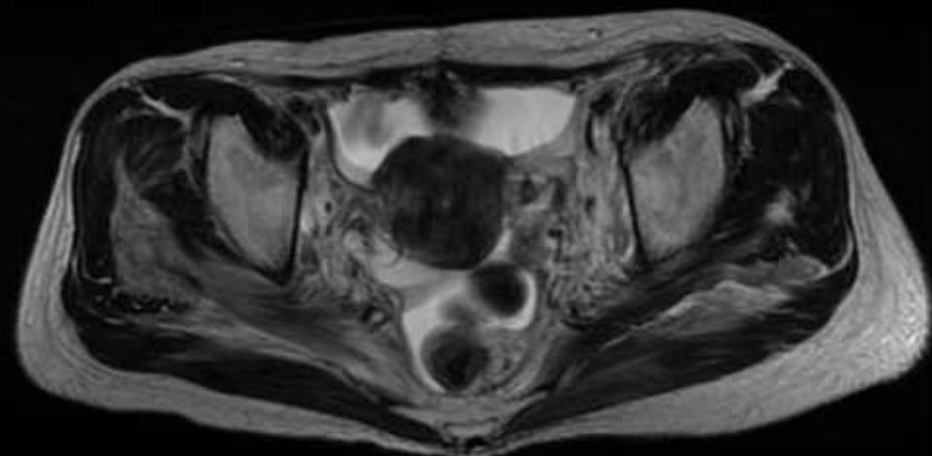


DWI

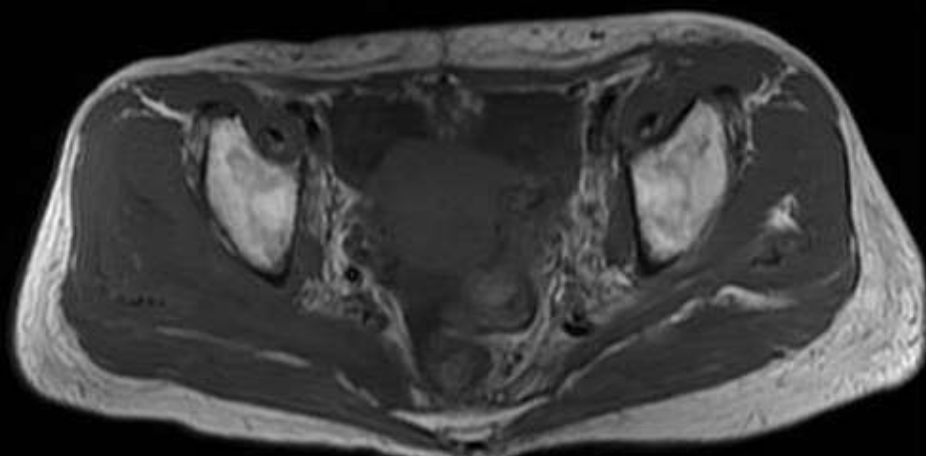


造影T1WI

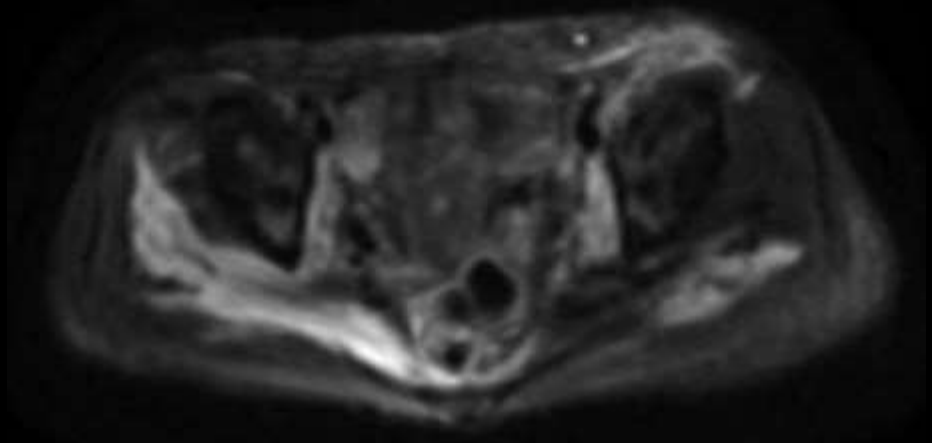
両側左右非対称性に広がる殿筋群・大腿筋群の腫脹



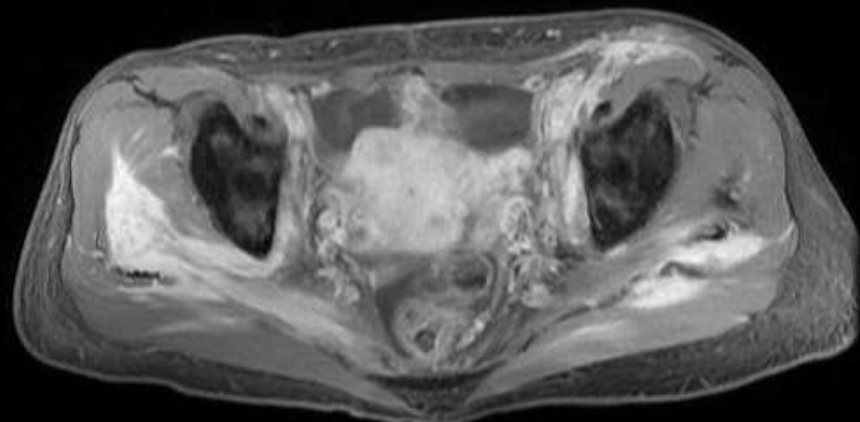
T2WI



T1WI

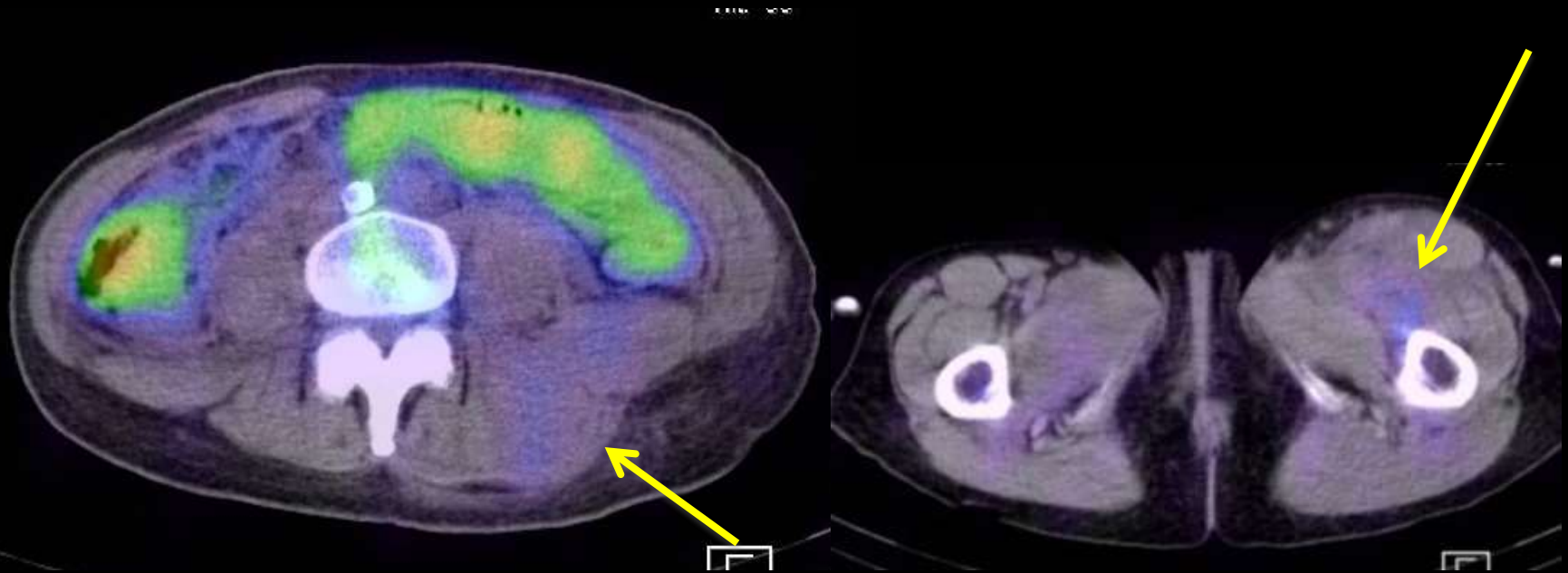


DWI



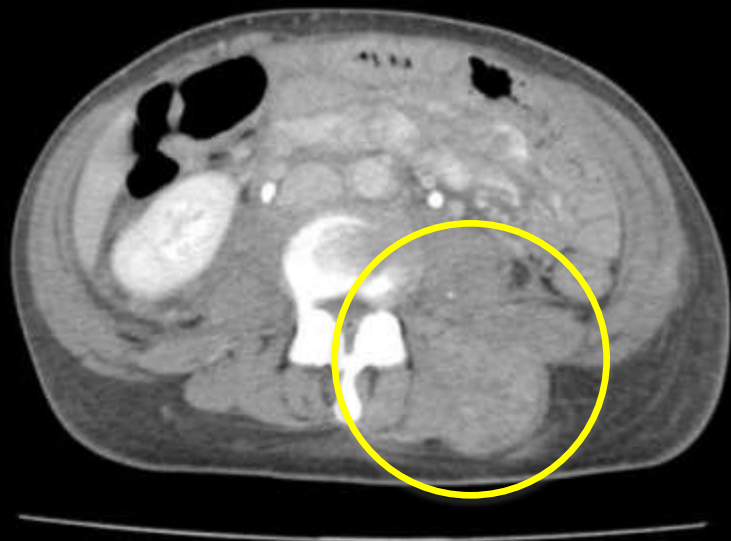
造影T1WI

# SPECT/CT fusion images



筋の腫脹部位に一致してごく淡い集積

化学療法施行前(造影CT)



化学療法施行後(単純CT)

