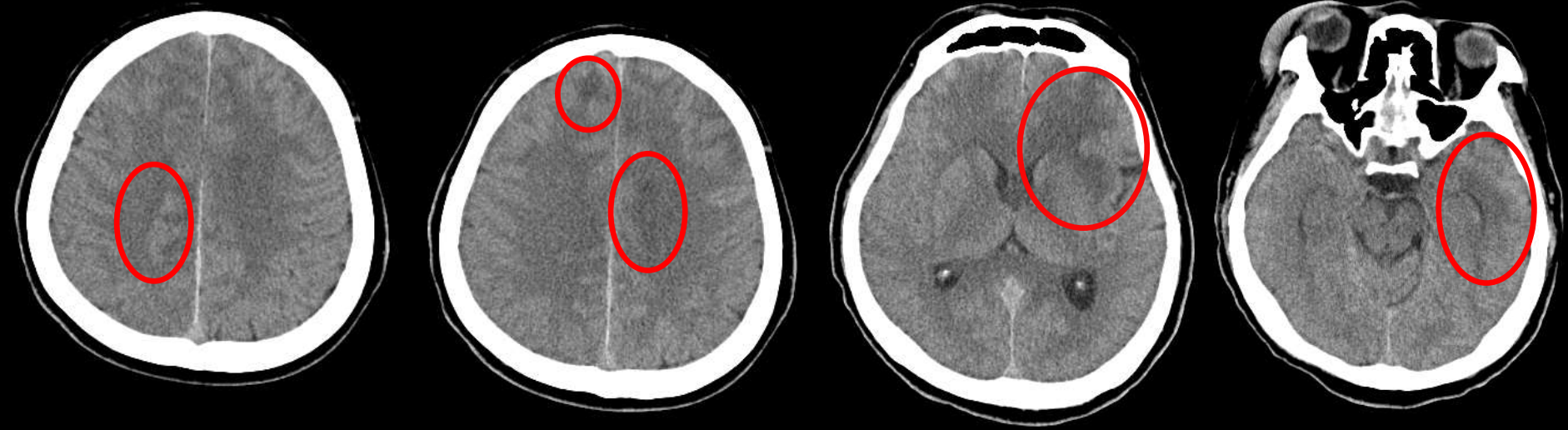
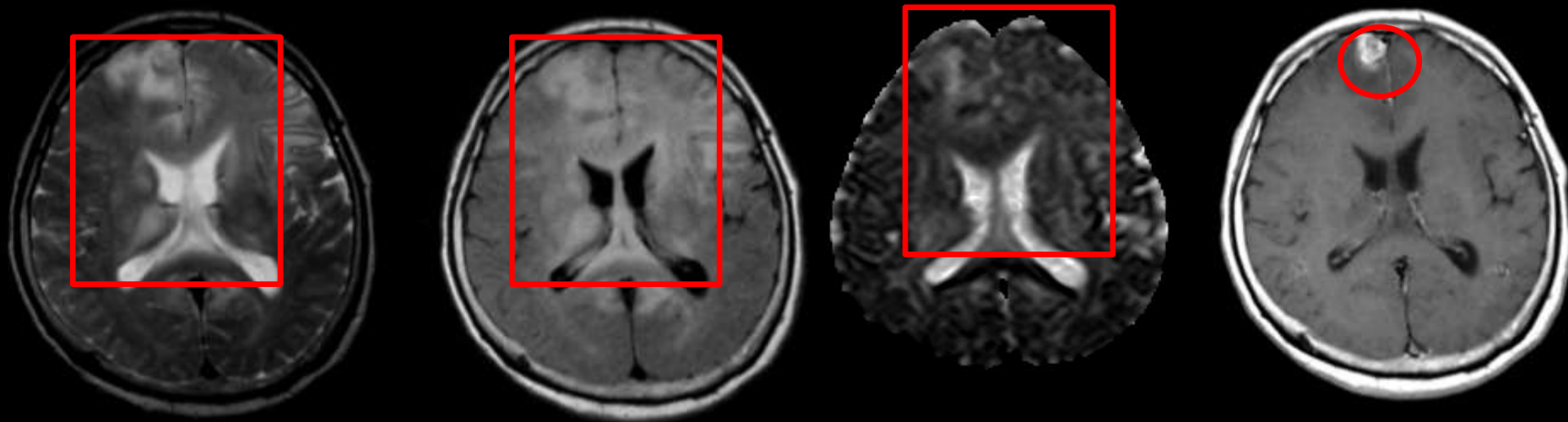


来院時 頭部単純CT



来院後5日目 頭部造影MRI

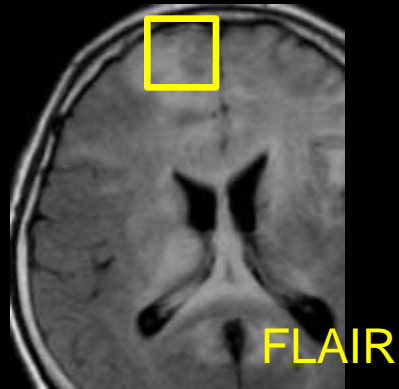


T2WI

FLAIR

ADC map

Gd造影



FLAIR



Gd造影

脳腫瘍
大脳 左半球より

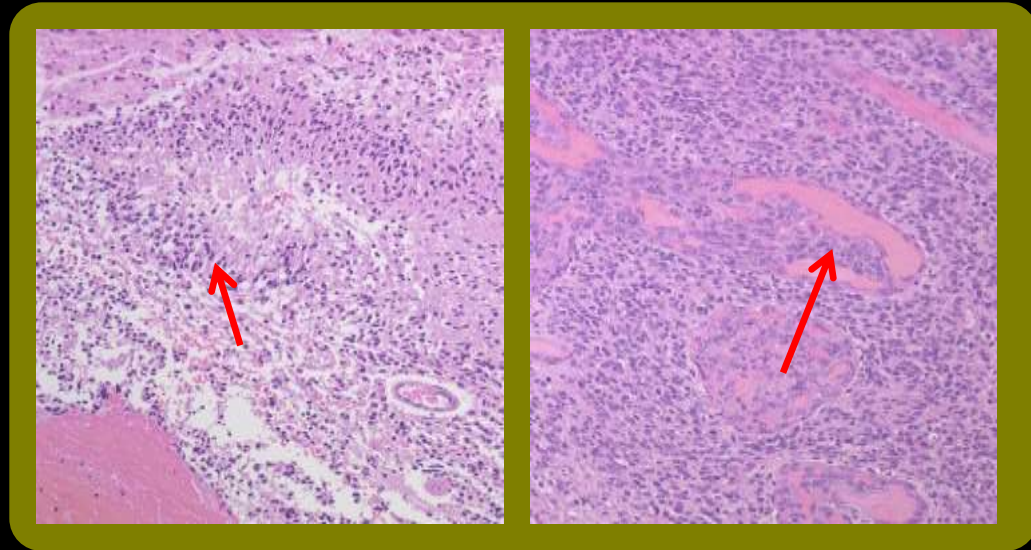
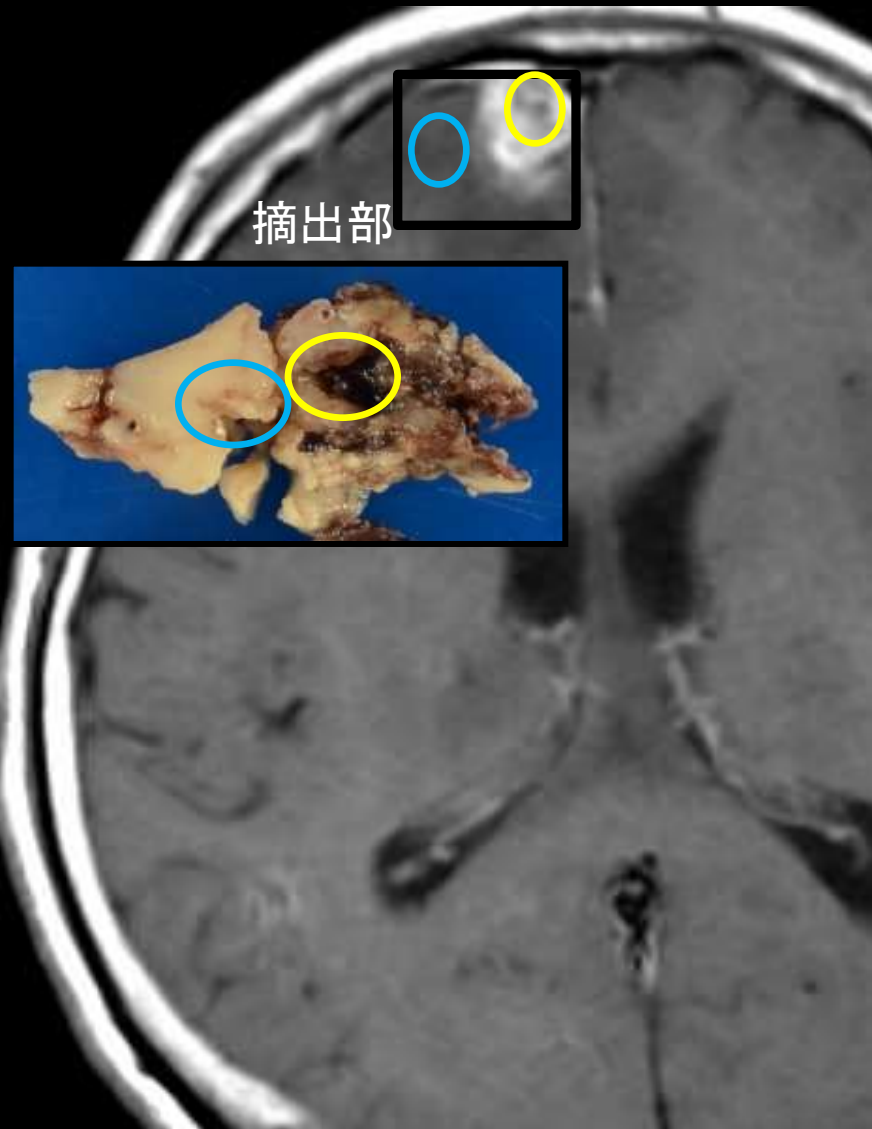
3×2×1.5cm

病理(マクロ像)



出血・壊死

病理(ミクロ) Glioblastomaの組織像



Diffuse astrocytoma(grade II)

