

腹部造影CT

單純

早期相



門脈相

平衡相



MRI



选择的脂肪抑制T2WI



T2WI(冠状断)



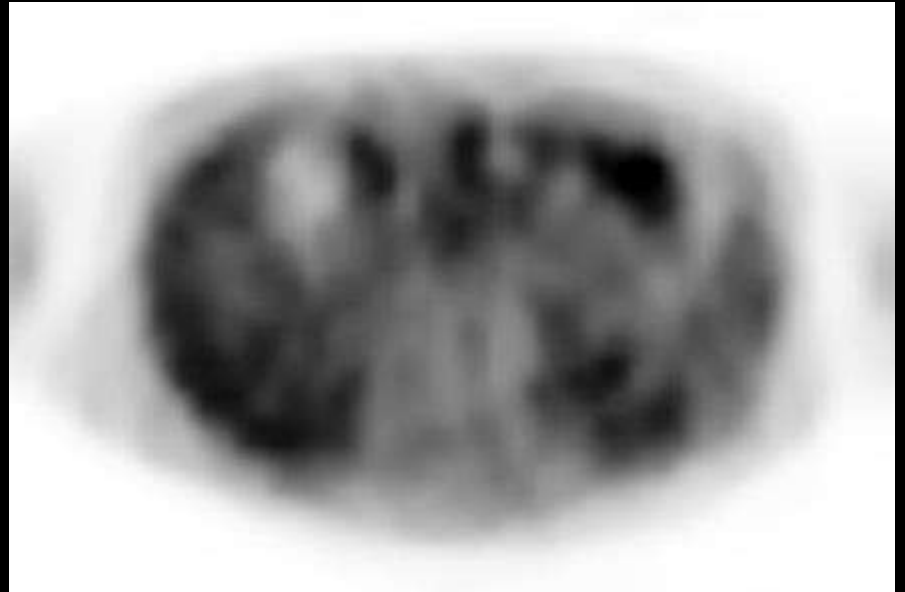
造影T1WI(矢状断)

18F-FDG-PET/CT

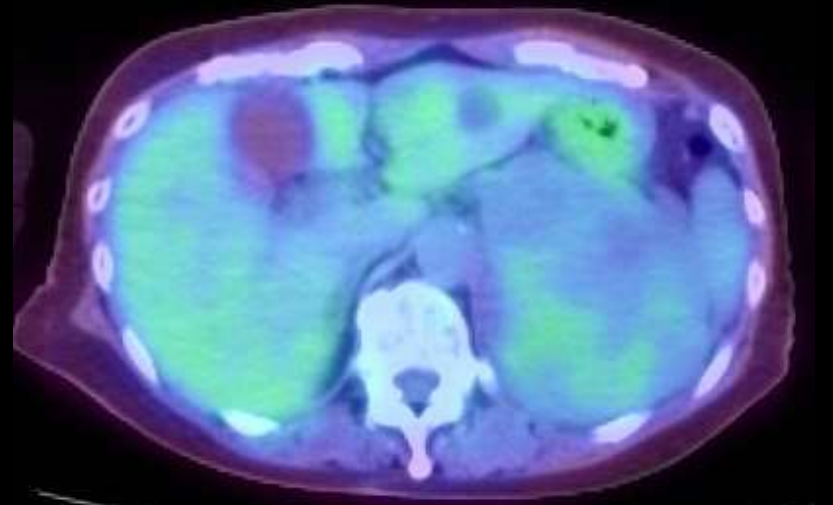
MIP



PET(early)



PET/CT fusion image(early)

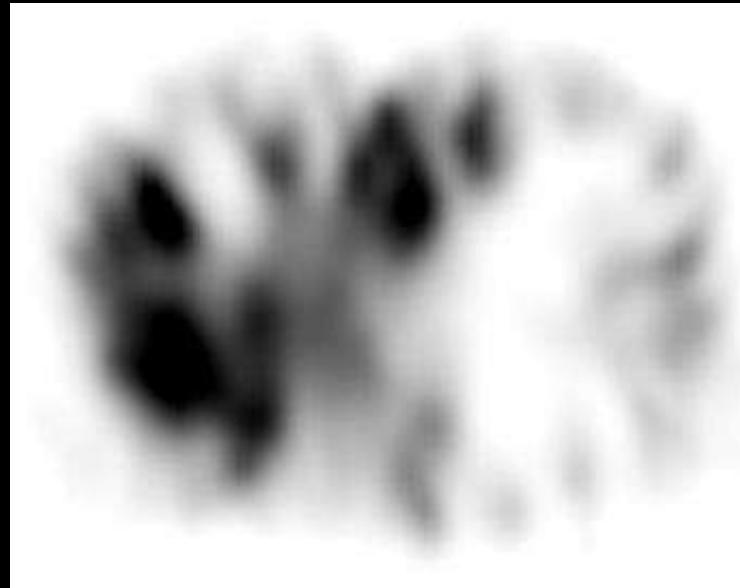


67Gallium

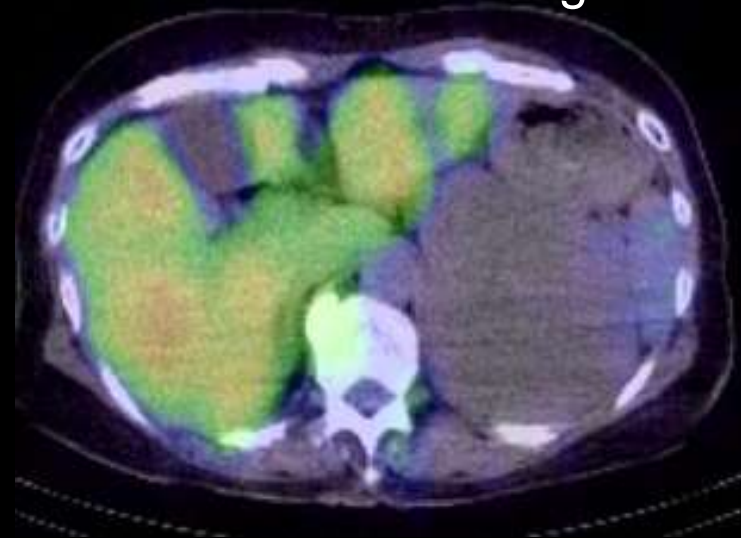
Planar



SPECT

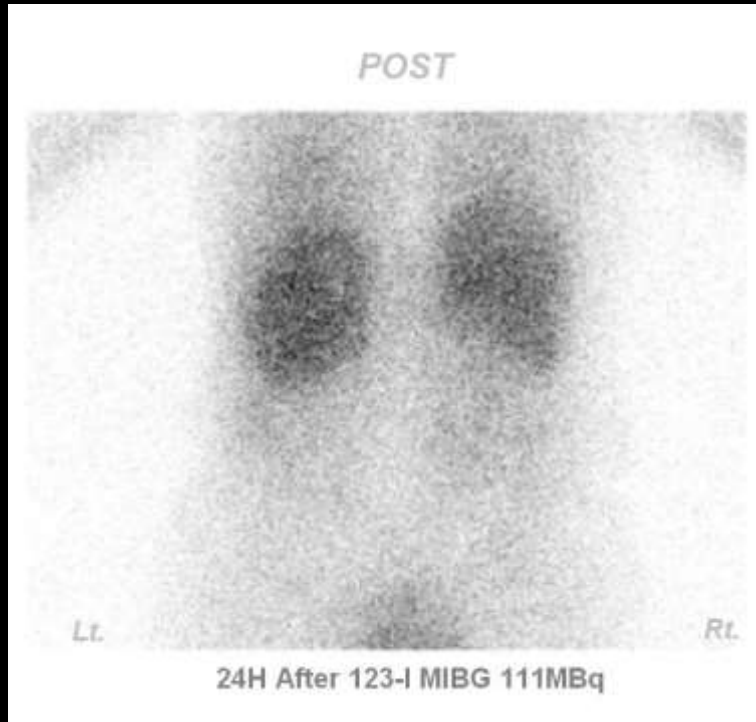


SPECT/CT fusion image

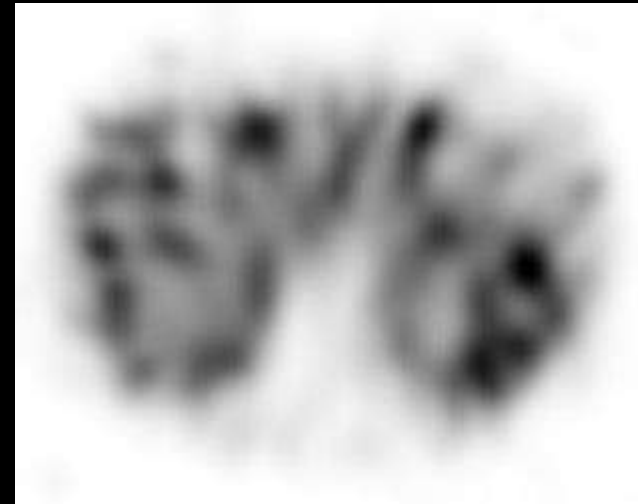


123I-MIBG

Planar



SPECT



SPECT/CT fusion image

