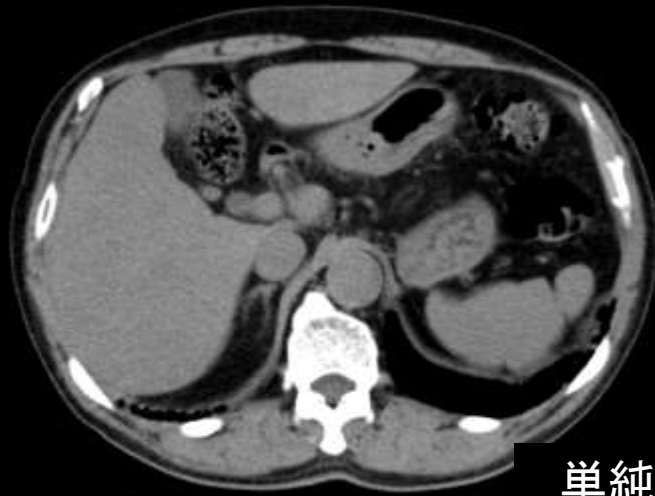


【CT検査】



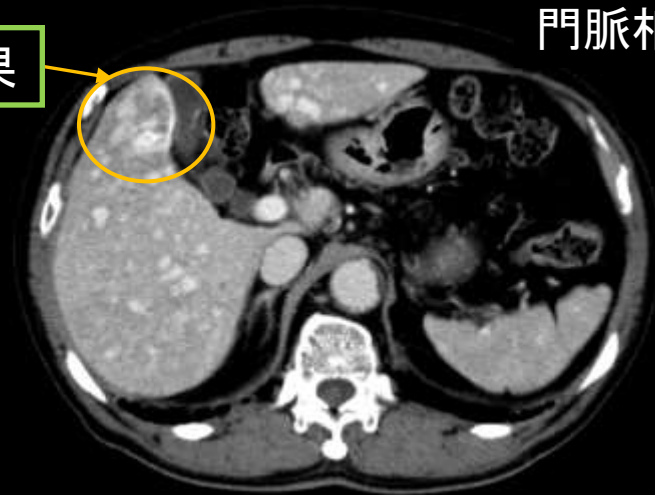
単純
門脈相

早期濃染を示す多発肝結節

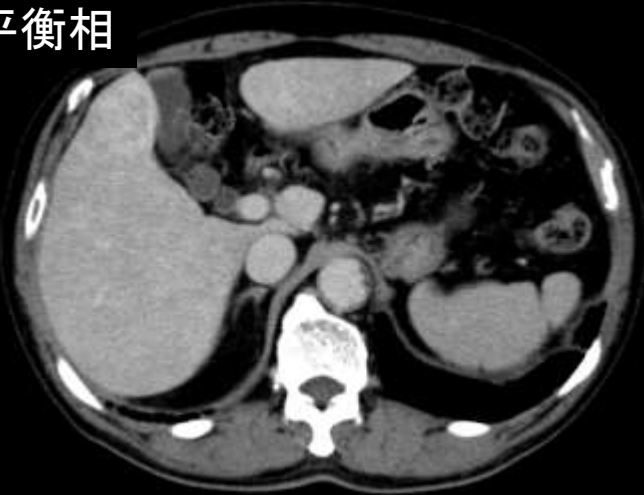


動脈相

辺縁に造影増強効果



平衡相



【MRI検査】

T2WI 高信号結節



EOB取り込み欠損?

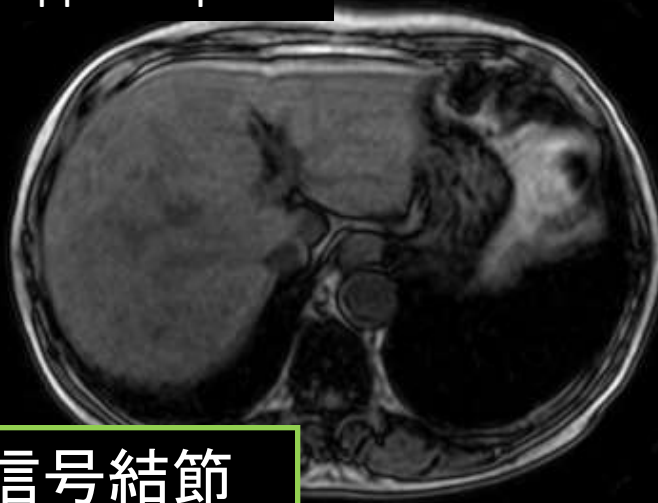


T2WI

肝細胞相

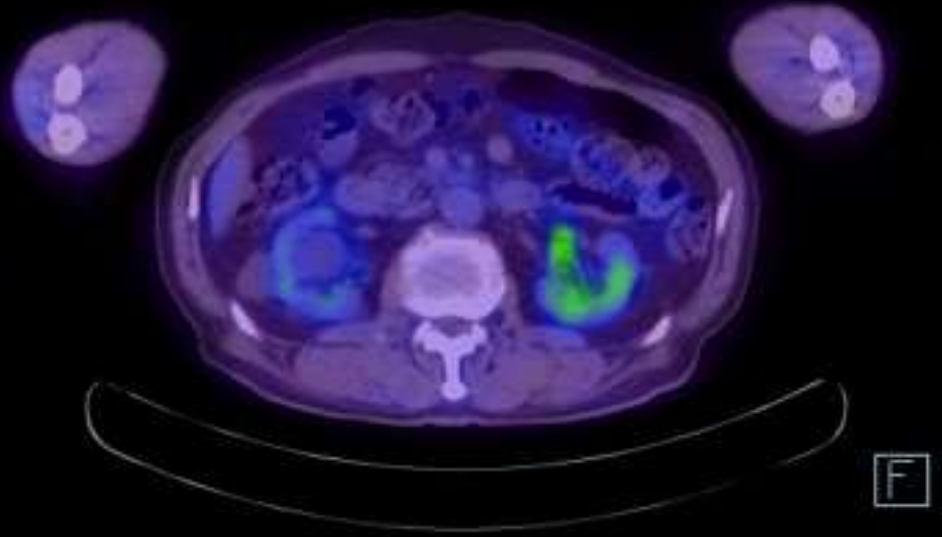
In-phase

Opposed-phase

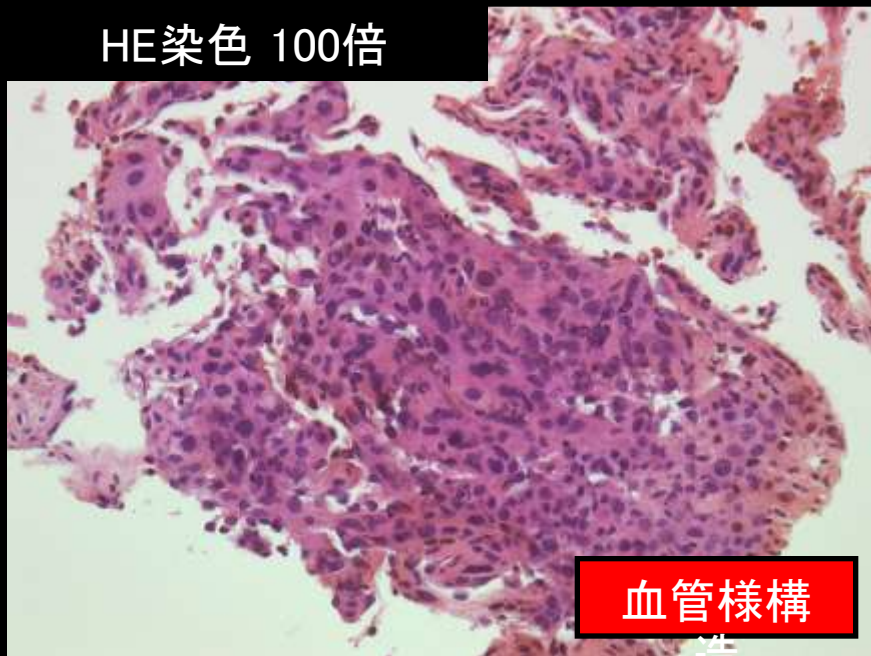


T1WI 低信号結節

【PET-CT検査】

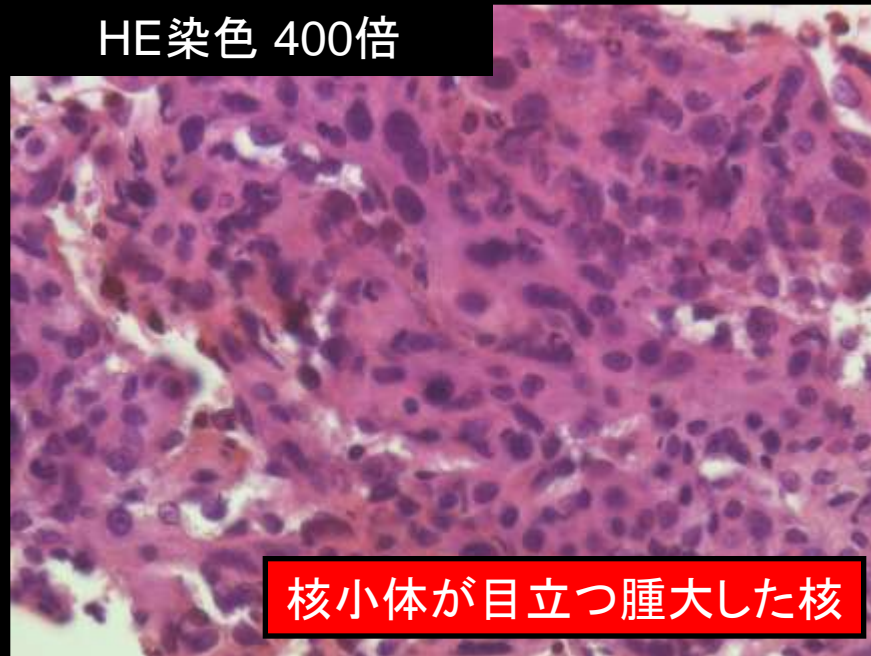


HE染色 100倍



血管様構造

HE染色 400倍



核小体が目立つ腫大した核