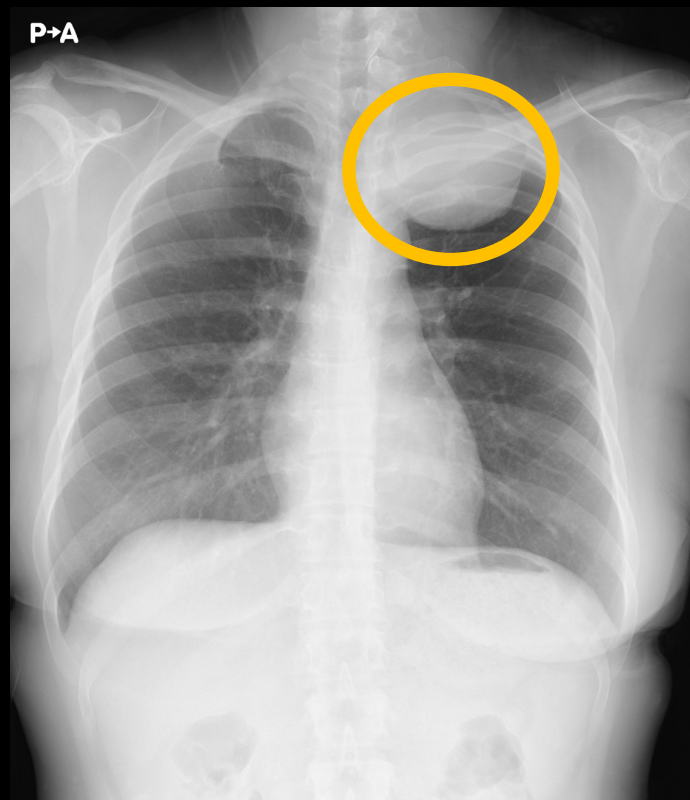
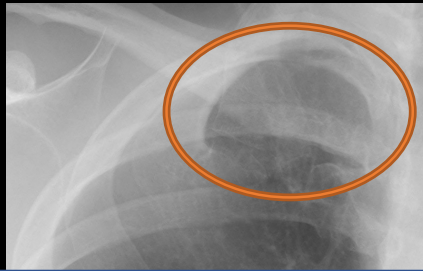


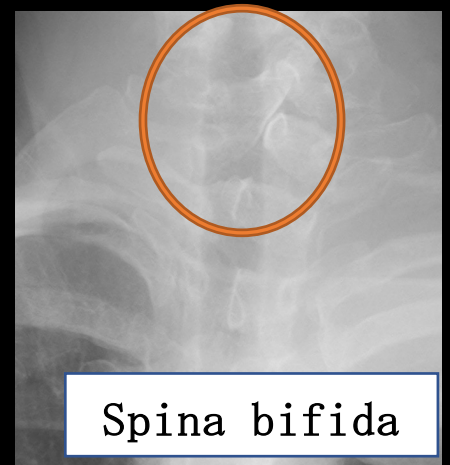
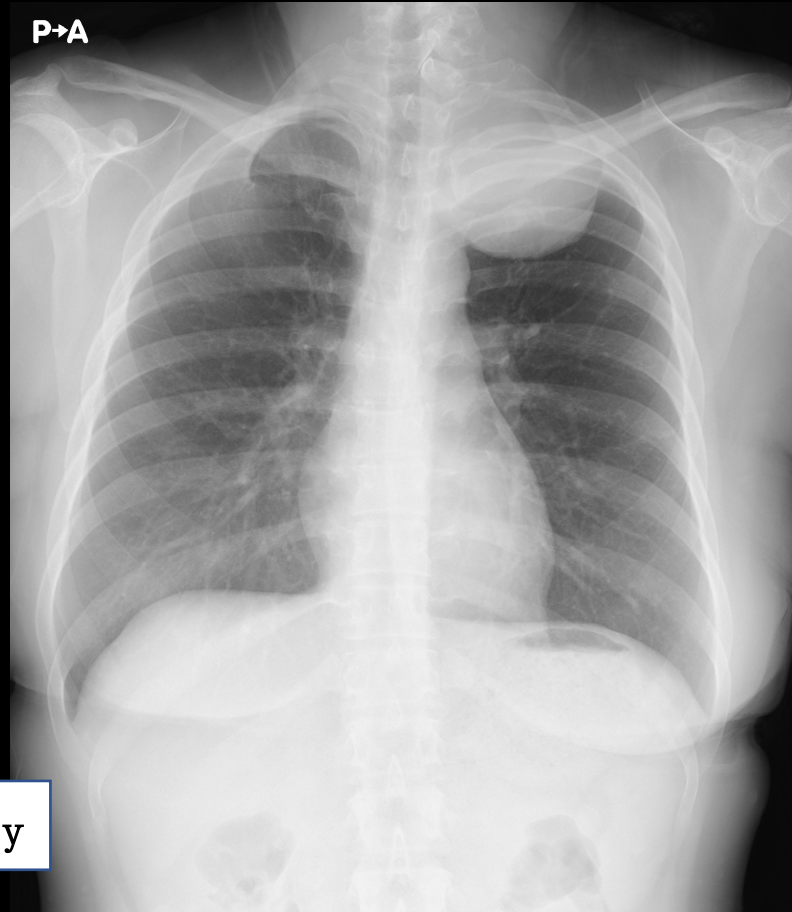
2年前 他院画像



当院受診時



1st-2nd rib fusion



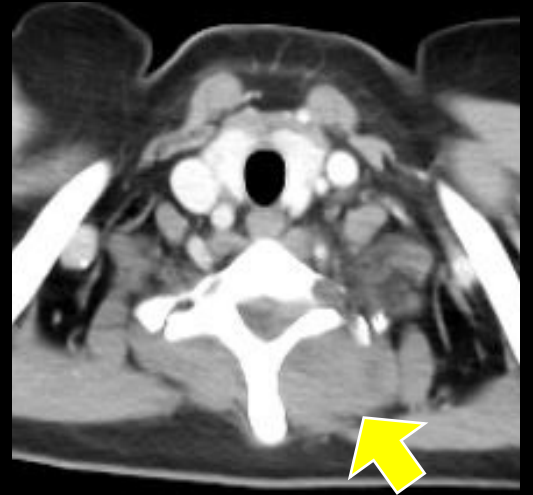
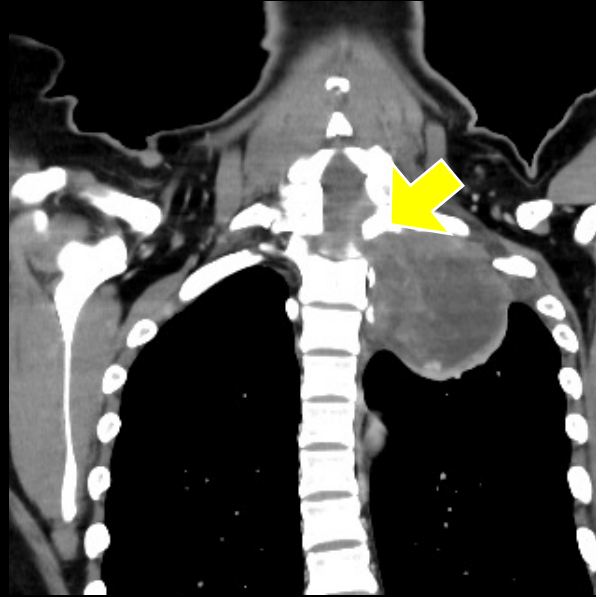
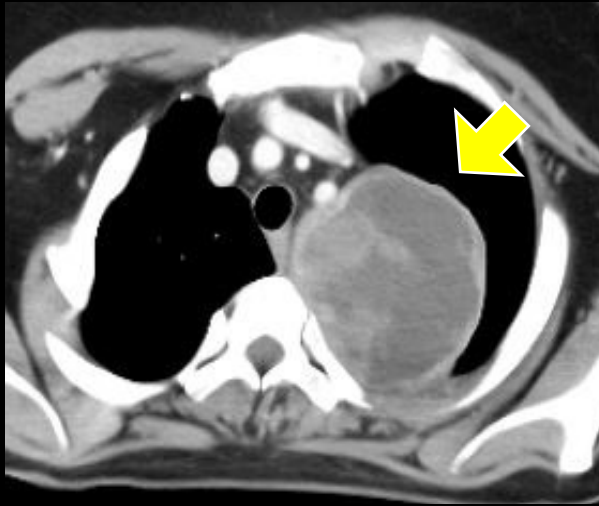
Spina bifida

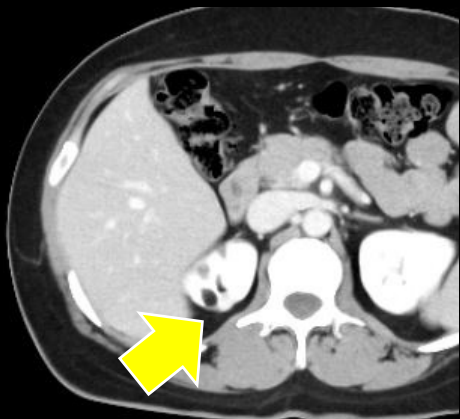


Acromial irregularity

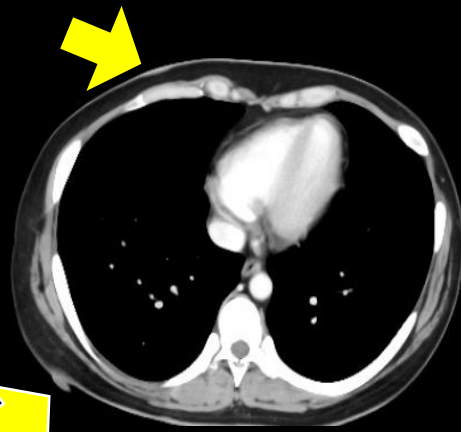


Ribbon rib appearance

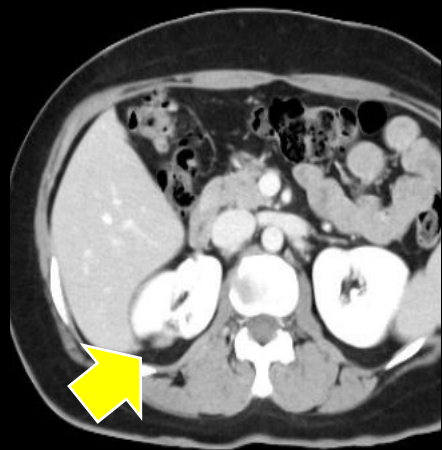




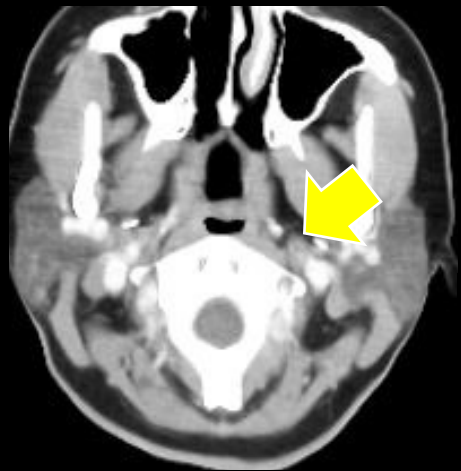
右腎血管筋脂肪腫



多發皮下結節

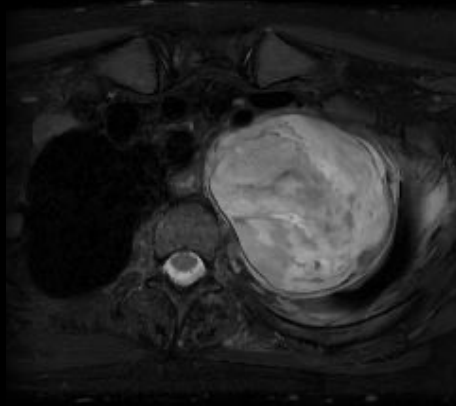


右腎皮質虛血癍痕

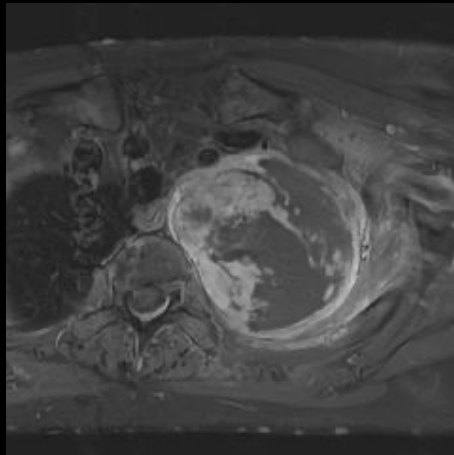


左內頸動脈閉塞

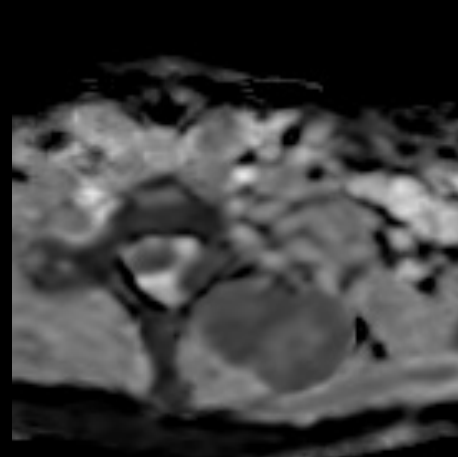
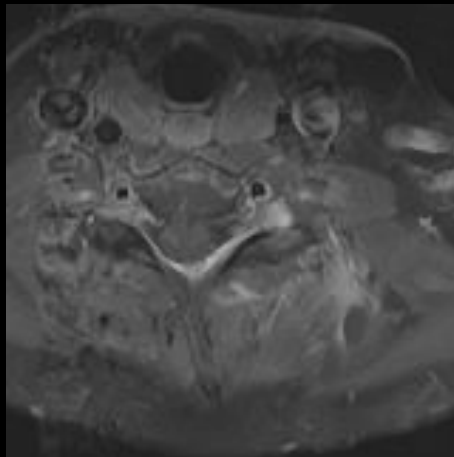
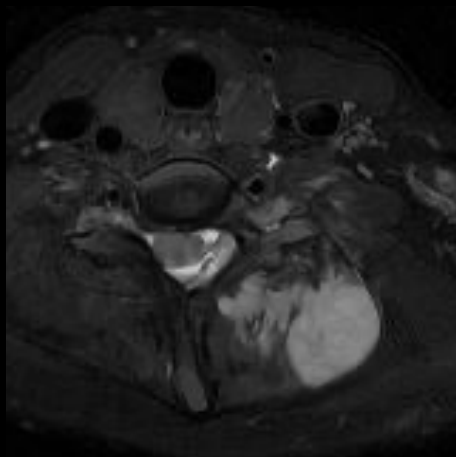
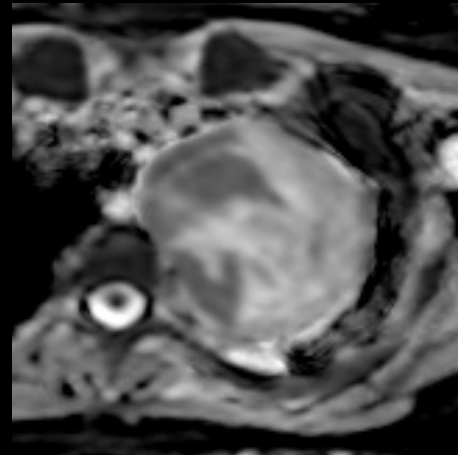
FST2WI



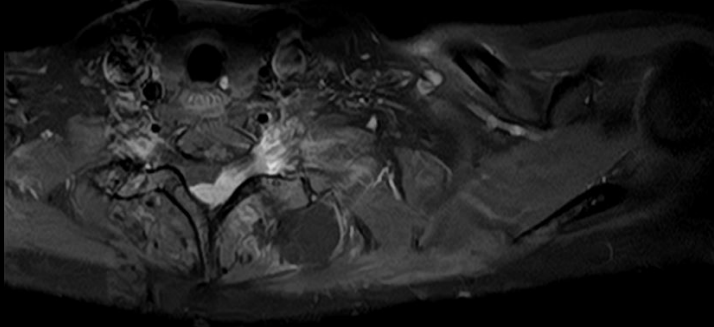
GdFST1WI



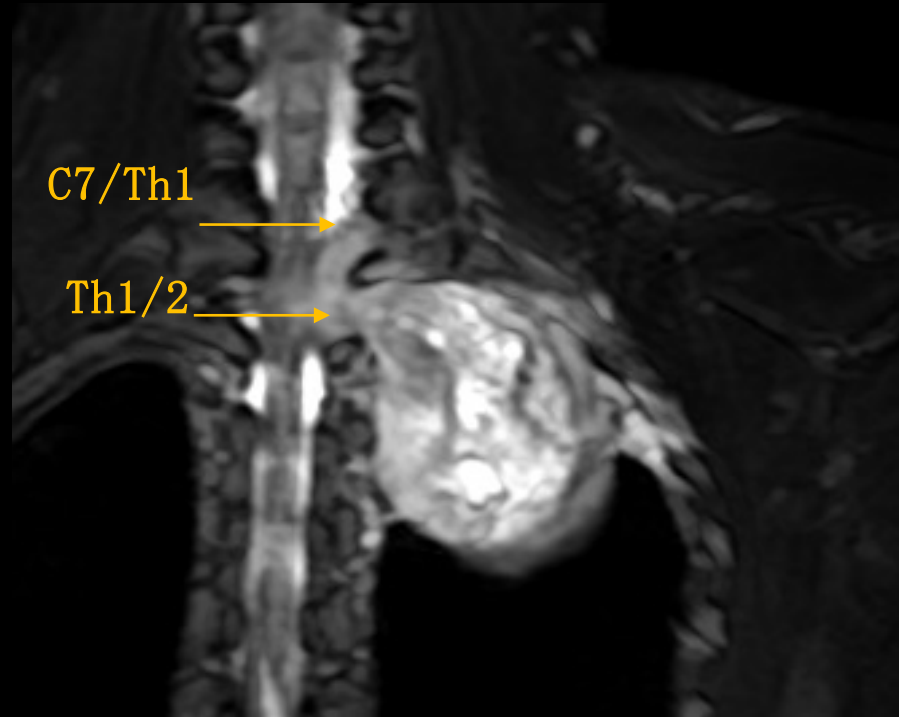
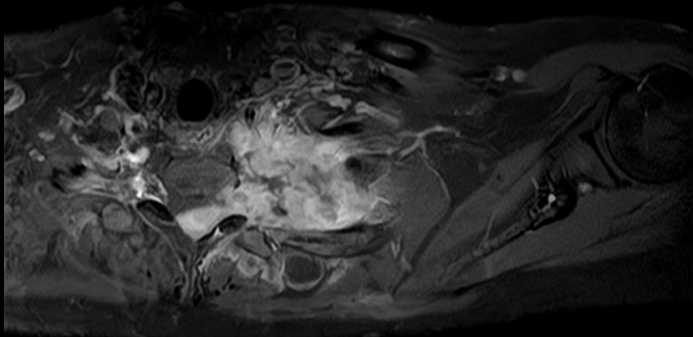
ADC



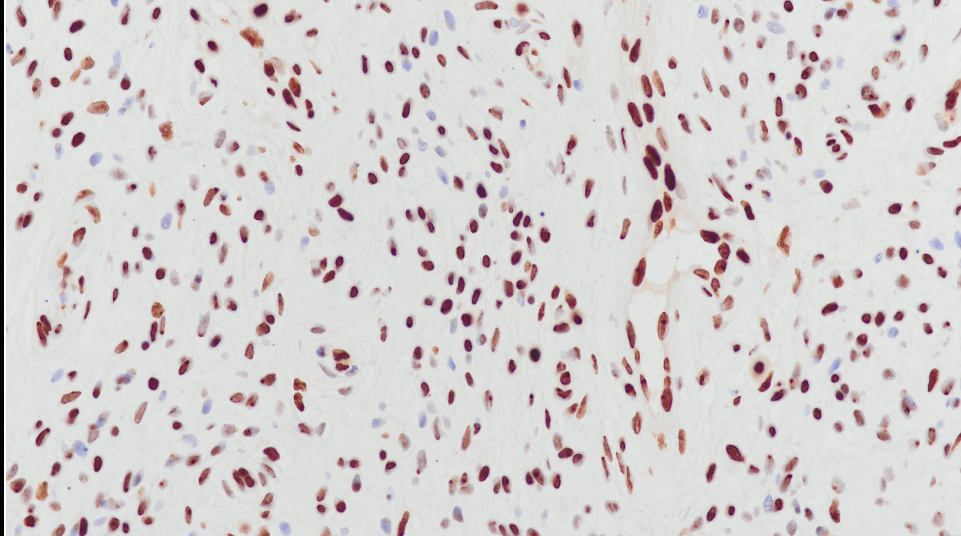
C7/Th1



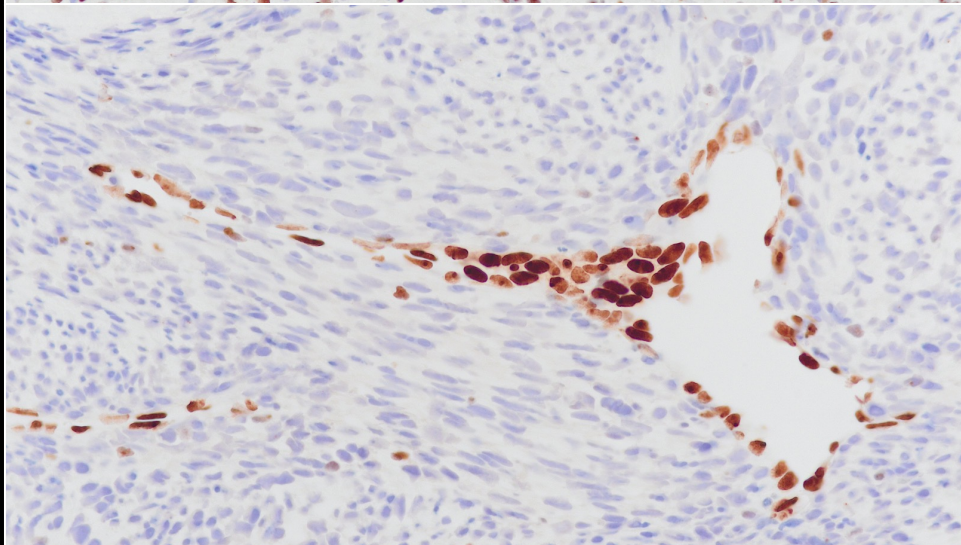
Th1/2



H3K27me3



腰部皮膚結節



左肺尖部