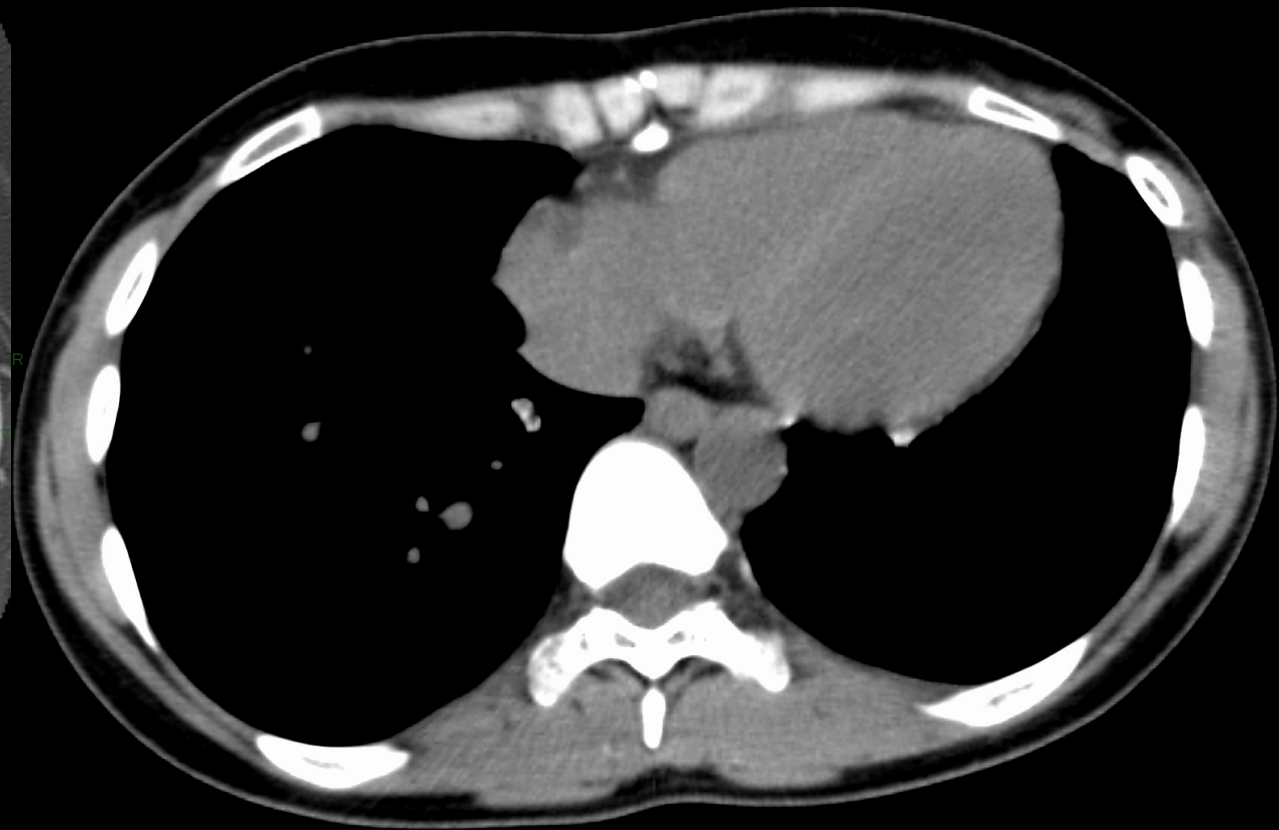
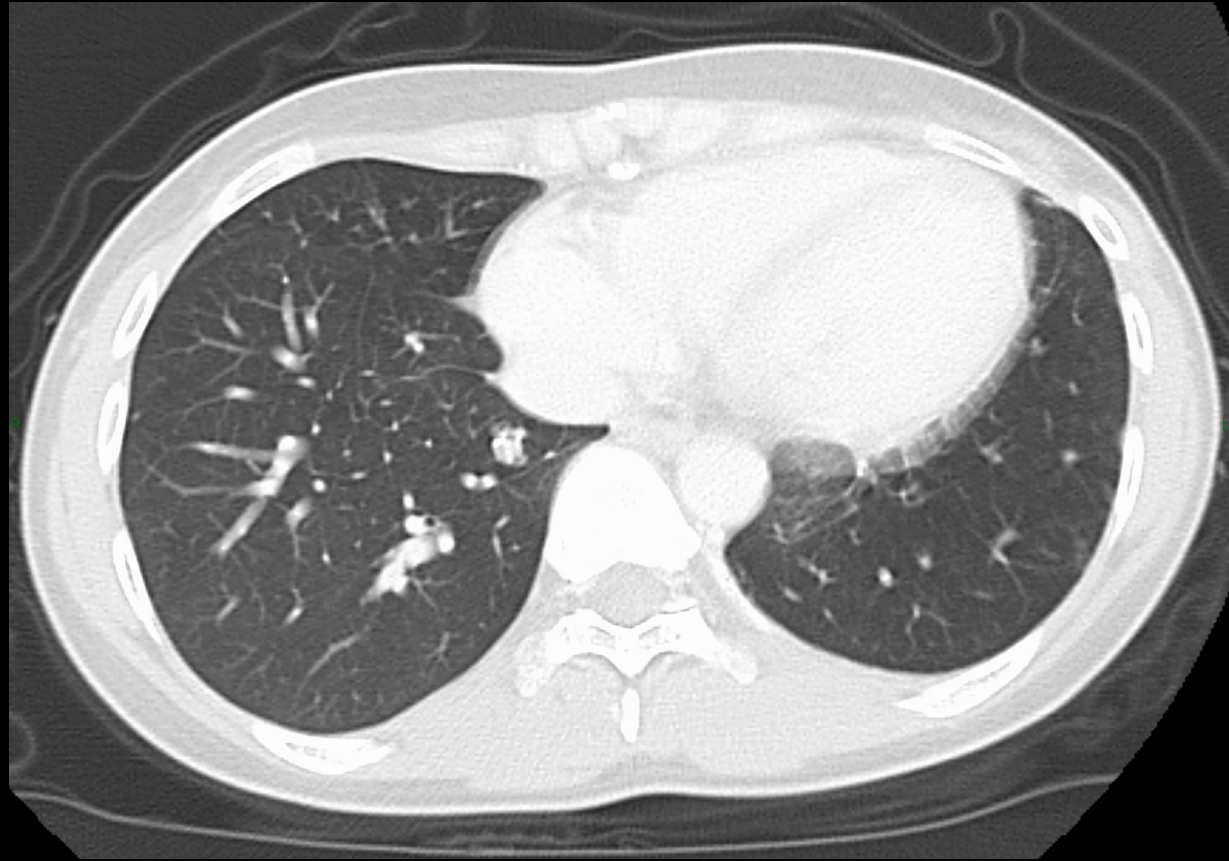


単純・造影CT(上腹部)

単純	動脈相
門脈相	静脈相



單純CT(胸部)

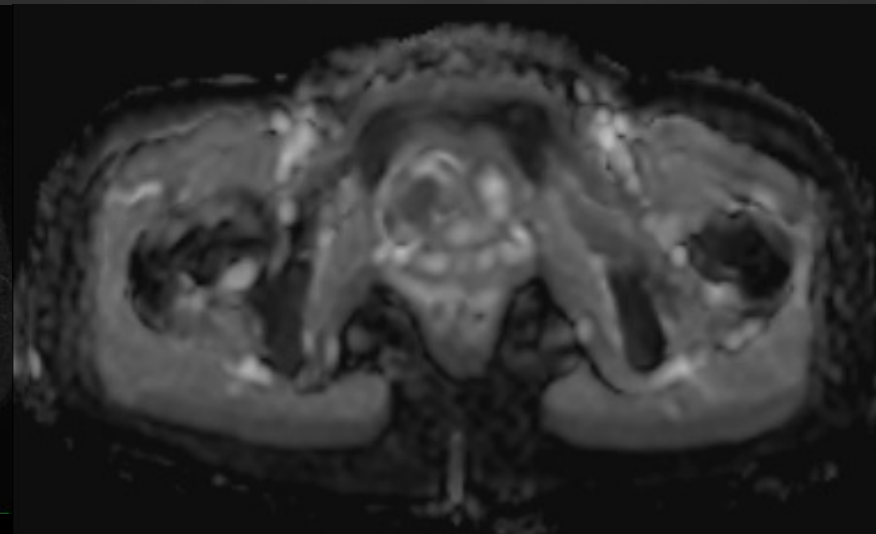
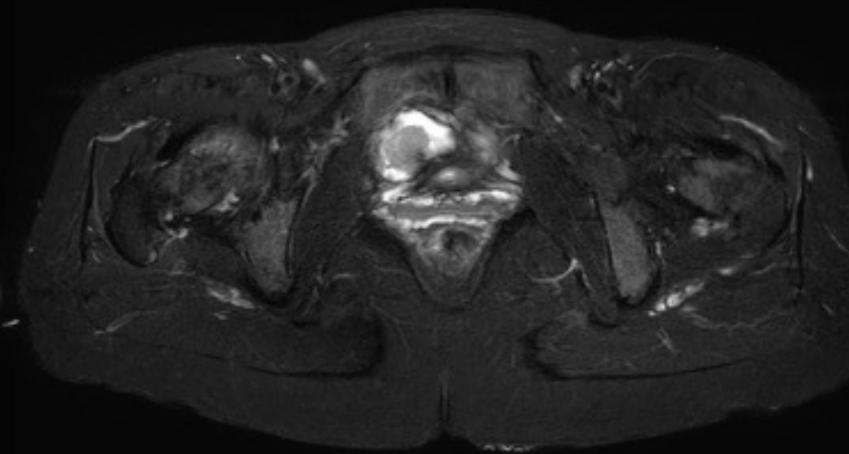
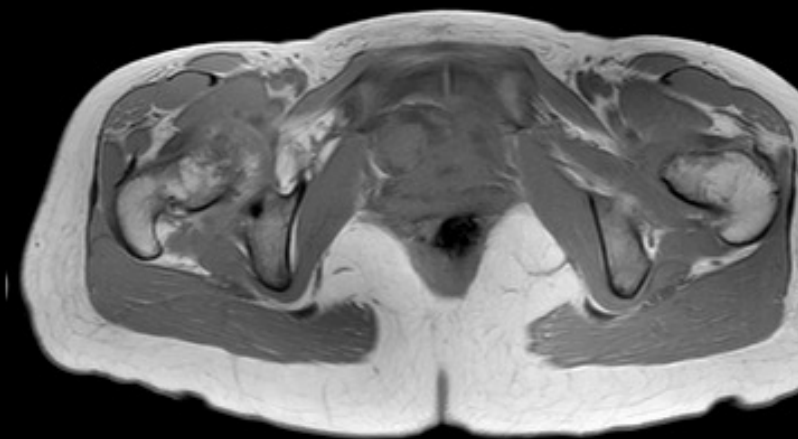
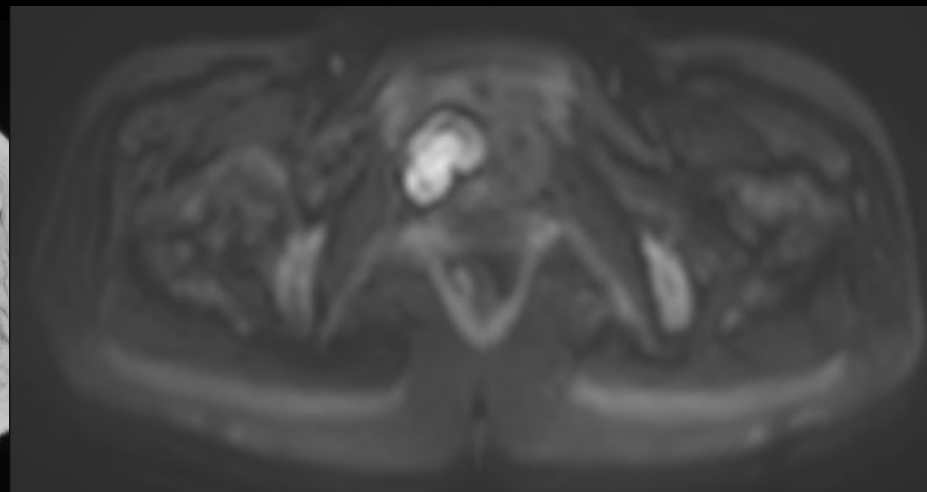
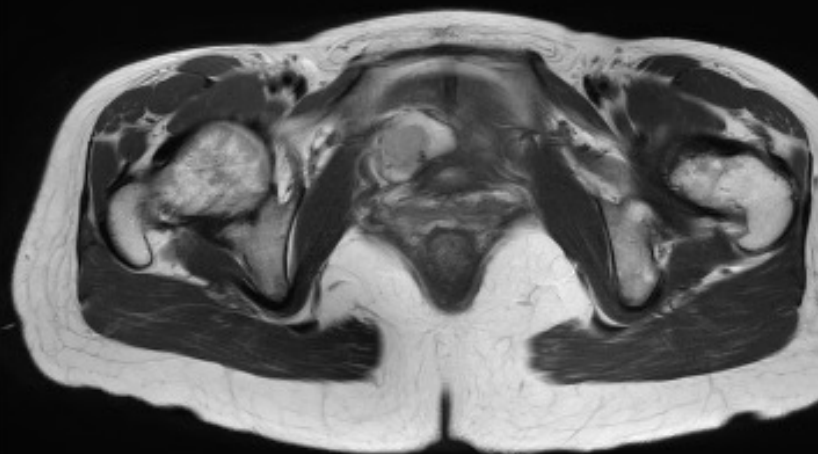
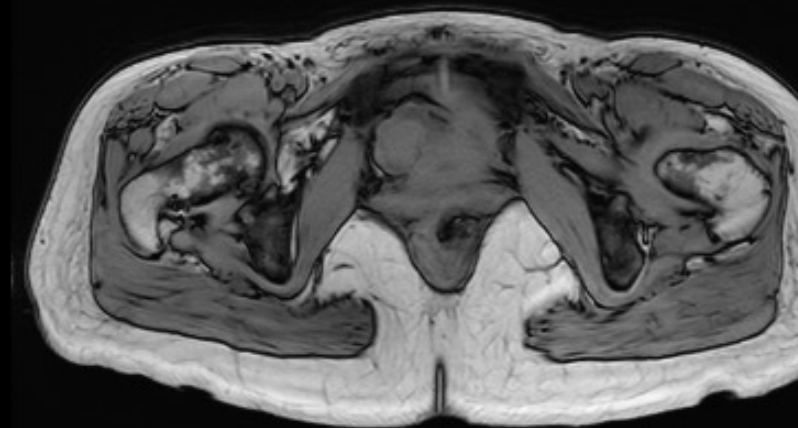


造影CT(骨盤)



單純MRI(骨盤)

In phase	T2WI	DWI(b=1000)
Out of phase	STIR	ADC map



造影MRI(骨盤)

pre	30s	60s
90s	120s	

